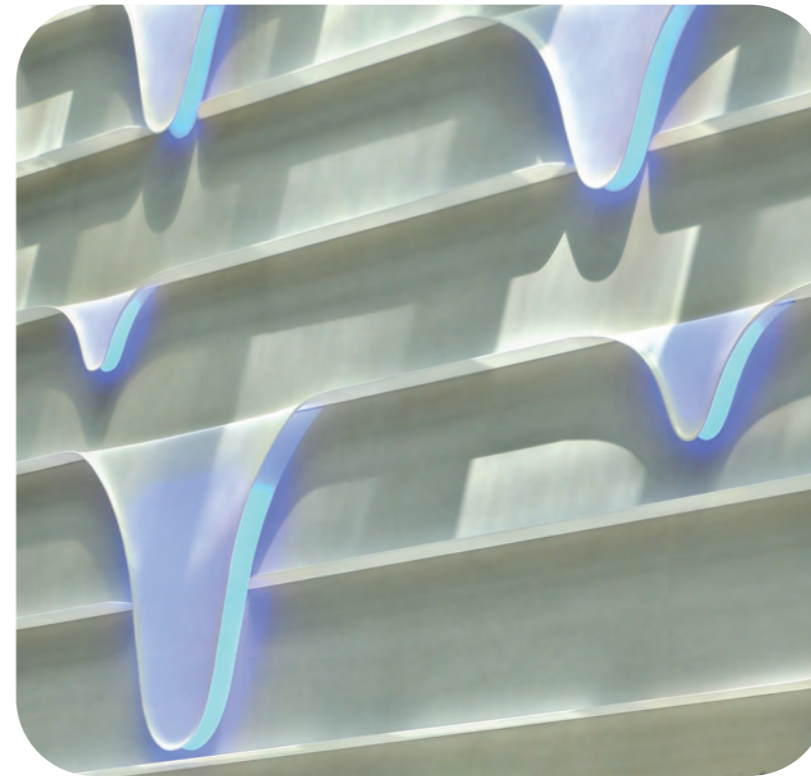




HI·MACS GENERAL BROCHURE

# HI·MACS



General Brochure



LX Hausys Headquarters (Seoul, Korea)  
email : surfaceinfo@lxhausys.com

LX Hausys America, Inc. (Atlanta)	+1-678-486-8244
LX Hausys Europe GmbH (Frankfurt)	+49-69-583029-0
LX Hausys China Trading Co., Ltd. (Shanghai)	+86-21-5241-6600
LX Hausys Russia, LLC (Moscow)	+7-495-663-39-58
LX Hausys India, Ltd. (Gurgaon)	+91-124-469-4200
LX Hausys Japan Office (Tokyo)	+81-3-5299-4533

The information contained in this brochure is intended to be for information only and can be amended at any time without prior notification.

© 2023 LX Hausys All rights reserved.

LX Hausys

## CONTENTS

---

<b>Index</b>	03
<b>Feature &amp; Benefits</b>	05
<hr/>	
<b>HIMACS COLLECTIONS</b>	
<hr/>	
Aurora Collection	07
Concrete Collection	09
Intense Ultra Collection	10
Marmo	11
Volcanics	12
Aster	13
Gravilla	14
Granite	15
Solid	16
Lucent	17
<hr/>	
<b>HIMACS PROJECTS</b>	
<hr/>	
Public Buildings / Offices	19
Facades / Wall Cladding	31
Shops / Exhibitions	41
Hotel / Hospitality	57
Healthcare	69
Kitchen / Bath	77
Furniture / Product Design	87
Cultural Facilities	95
<hr/>	
<b>HIMACS Colours</b>	97
<b>Product Specification</b>	99
<b>LX Hausys Global Network</b>	101

---

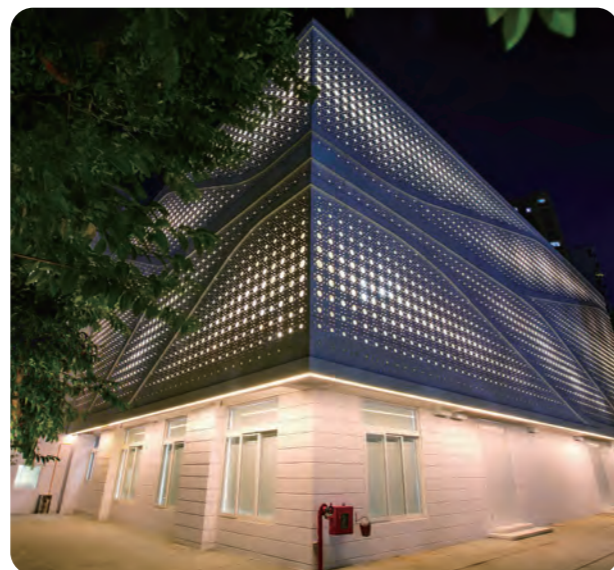
**1 Public Buildings & Offices**

19 - 30



**2 Facades & Wall Cladding**

31 - 40



**3 Shops & Exhibitions**

41 - 56



**4 Hotel & Restaurants**

57 - 68



**5 Healthcare**

69 - 76



**6 Kitchen & Bath**

77 - 86



**7 Furniture & Product Design**

87 - 94



**8 Cultural Facilities**

95 - 96



## OUTSTANDING FEATURES ABOUND. A COMPELLING MATERIAL.



### Simple processing

Although HIMACS is almost as robust as stone, it can be worked in the same way as wood. Using conventional carpenters' tools, this solid surface material can be sawn, routed or drilled. Thanks to the new Thermalcure-technology the surface of HIMACS performs better than the standard in Solid Surface. You save precious time because it is easier to work with.



### Seamless perfection

HIMACS allows for visually seamless fabrication. Smooth integration creates large areas without visible joints or edges as well as the flush mounting of bowls. This results in extremely hygienic, easy-to-clean installations, ideally suited for use in hospitals and laboratories.



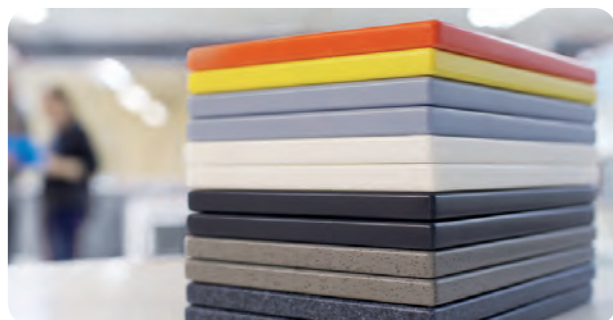
### Three-dimensional design

HIMACS boasts a simple heating process and three dimensional thermoforming capabilities. This enables greater forming flexibility compared with other conventional materials so that spectacular ideas can quickly take on a concrete shape. HIMACS Ultra-Thermoforming formula allows the material to be better shaped; the minimal internal radius of 6 mm (previously 50 mm) opens a wholly new design dimension.



### Dramatic translucency

Certain colours and thicknesses of HIMACS exhibit a subtle translucency when exposed to light. The translucent properties of HIMACS make it the perfect choice for lamps and illuminated furnishings.



### Huge colour spectrum

Colour selection is a crucial factor when it comes to high-quality design. HIMACS offers an enormous range of colours. No matter what colour you choose, HIMACS remains 100% homogeneous.



More than the sum of the parts.

**Aurora Collection** p.07

**Concrete Collection** p.09

**Intense Ultra Collection** p.10

**Marmo** p.11

**Volcanics / Aster** p.12-13

**Gravilla / Granite** p.14-15

**Solid / Lucent** p.16-17

# HIMACS Collections.



Aurora Canyon

# AURORA COLLECTION

The new Aurora Collection is inspired by the natural beauty of the Northern Lights. In brilliant waves over the sky the vibrant flow of Aurora Borealis is captured in these tones. With the semi-translucency of the colours Aurora Pavia and Aurora Cotton you can play with light effects giving dramatic results to integrate this natural phenomenon to your interior design.

• Representative Color

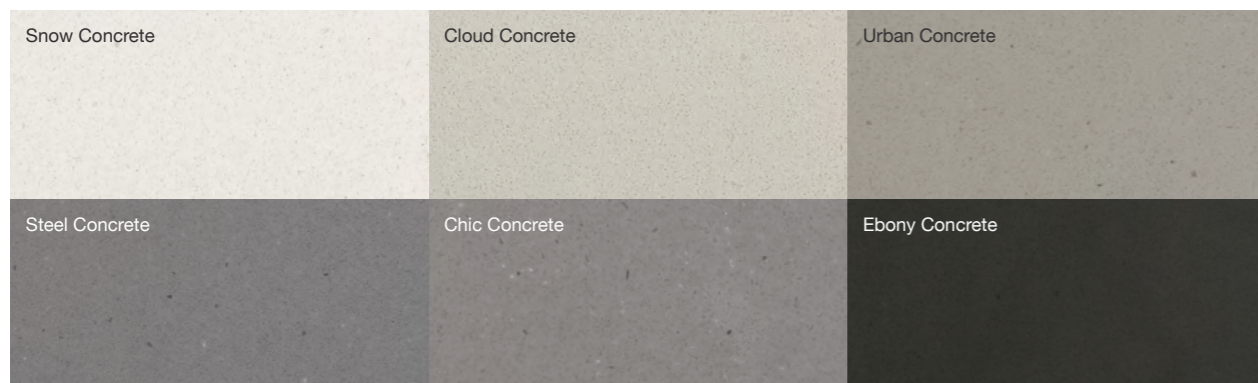
Aurora Calacatta Fiore	Aurora Calacatta Luna	Aurora Pavia
Aurora Blanc	Aurora Daymoon	Aurora Modern Grey
Aurora Linen Cream	Aurora Sable	Aurora Bisque
Aurora Umber	Aurora Terra	Aurora Sanremo



# CONCRETE COLLECTION

The industrial look of concrete combined with the incredible flexibility of HIMACS. The Concrete Collection adds huge opportunities for great designs to architects and designers.

• Representative Color



Urban Concrete

# INTENSE ULTRA COLLECTION

HIMACS Intense Ultra is based on a brand-new material formulation and combines Intense Colour technology with Ultra-thermoforming. Dark colours become more "intense", darker and also more resistant, with less visible scratches. The new HIMACS Intense Ultra, also has excellent thermoforming capabilities. This new formula allows the material to reach a very small internal radius, up to 6mm, with almost no whitening effect even when using dark colours.

• Representative Color

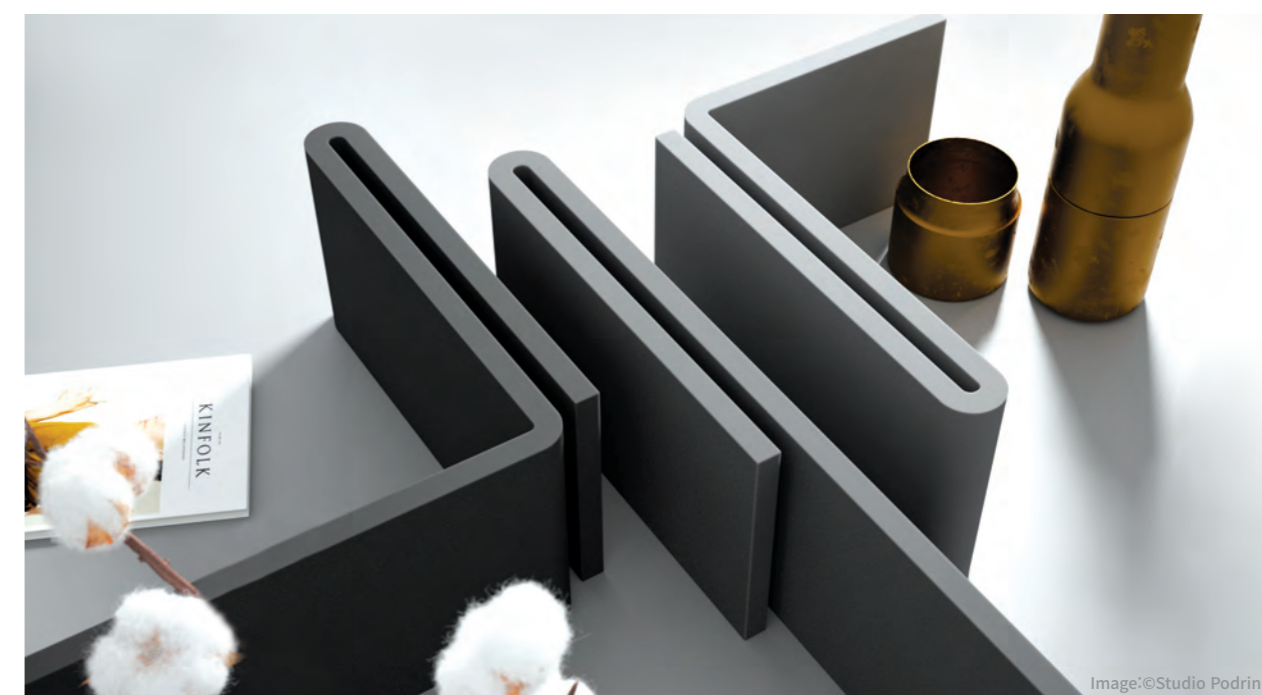
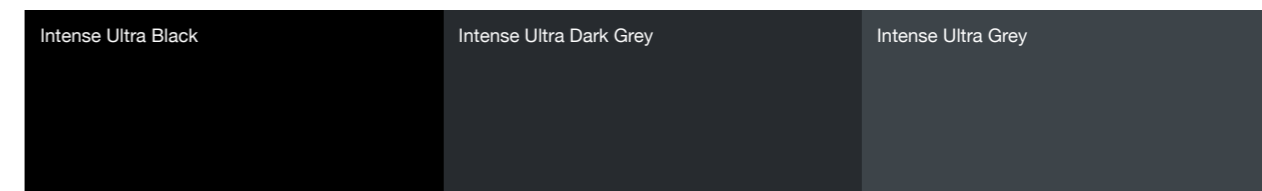


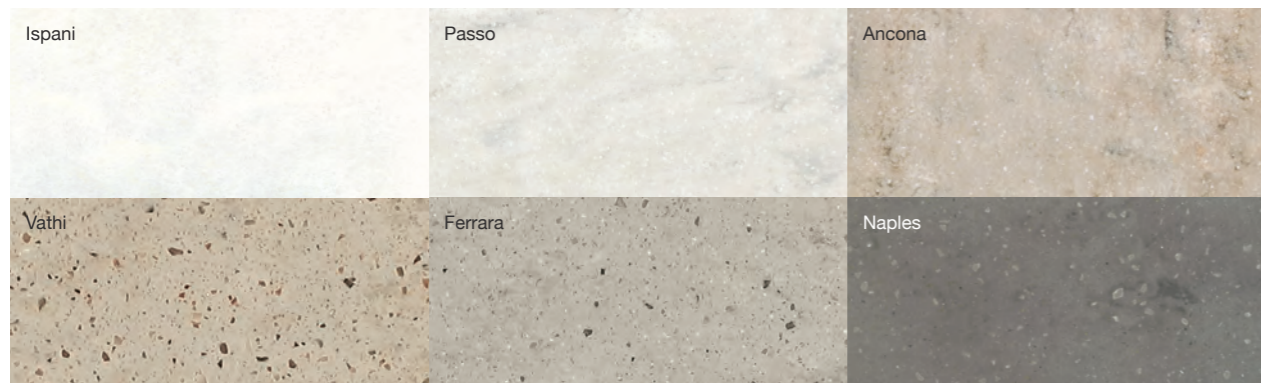
Image: ©Studio Podrini



# MARMO

Captivating random veined texture, reminiscent of marble.

• Representative Color



Passo

# VOLCANICS

The large particles of the Volcanics shades add a sense of style to any design. When used on a large scale the result is a dramatic showpiece.

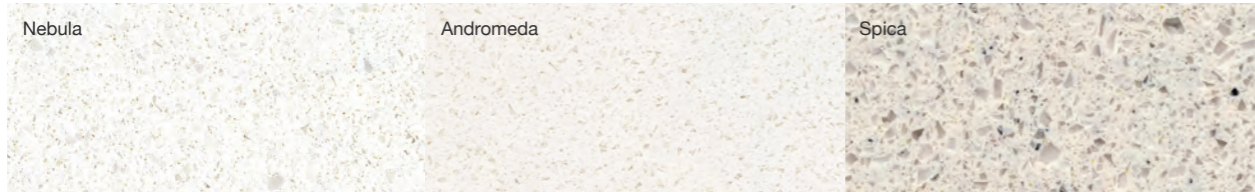


Light Calizo

# ASTER

Aster is a collection of elegant shades of grey, ranging from almost white to a warm beige, all with a gorgeous mother of pearl shimmer.

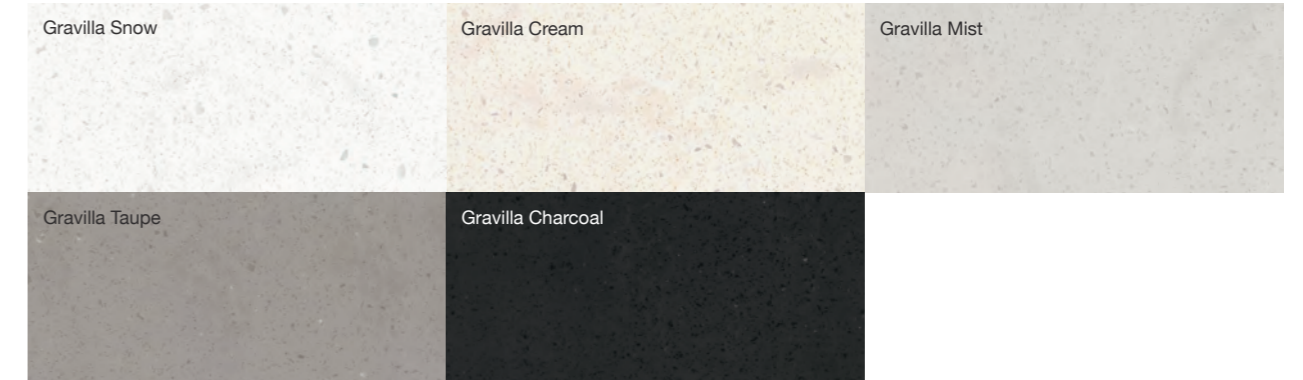
• Representative Color



Andromeda

# GRAVILLA

Gravilla means pebble in Spanish. It is a premium collection with short scattering feathers pattern on top of the granite chip. Its natural seam of short pattern and convenient visibility goes well with stylish and modern interiors.



Gravilla Snow



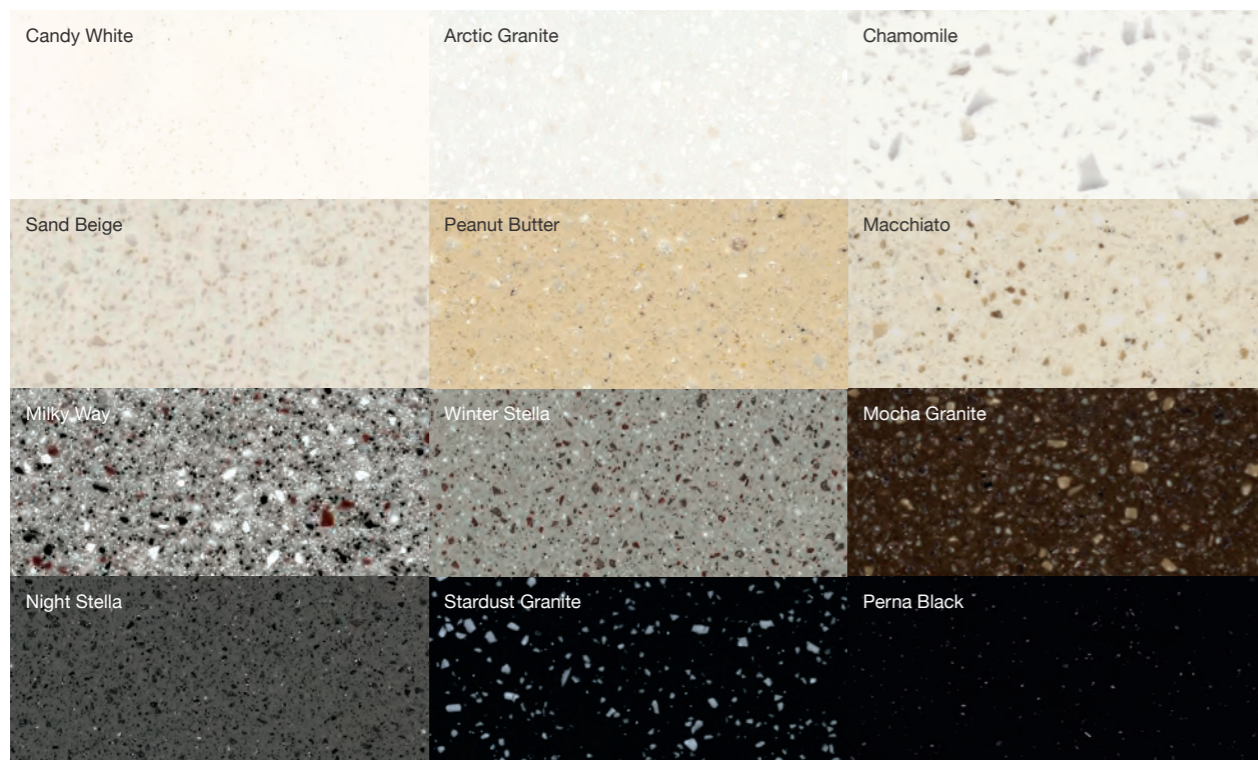
Gravilla Mist



# GRANITE

Ultimate elegance thanks to lively textures, harmoniously natural tones and maximum subtleness. The Granite collection is perfect either alone or in combination with other colours.

• Representative Color

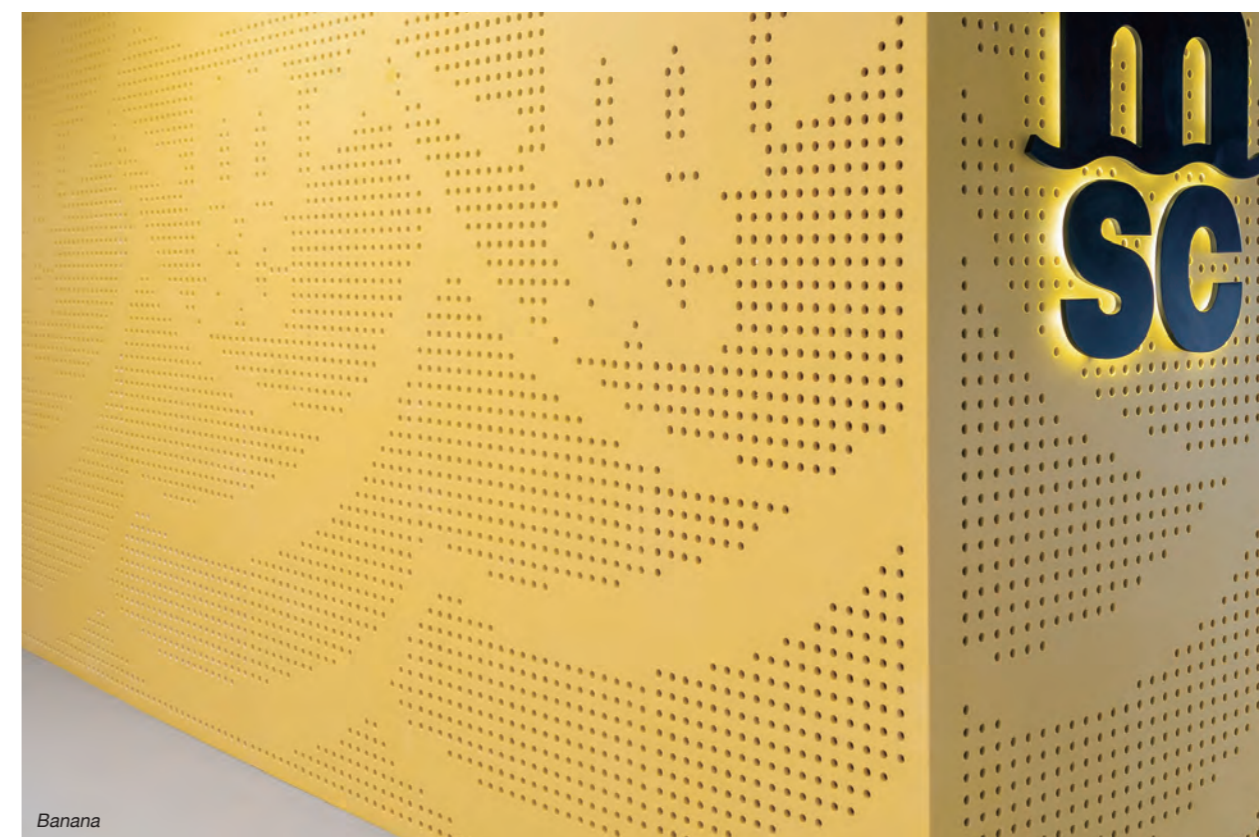


# SOLID

The classic in terms of solid surfaces - a wide range of attractive shades of white lies at the heart of this collection. Complemented by colourful, dynamic uni-shade accents from Banana to Festival Pink. The timeless collection offers the perfect colour for every design.



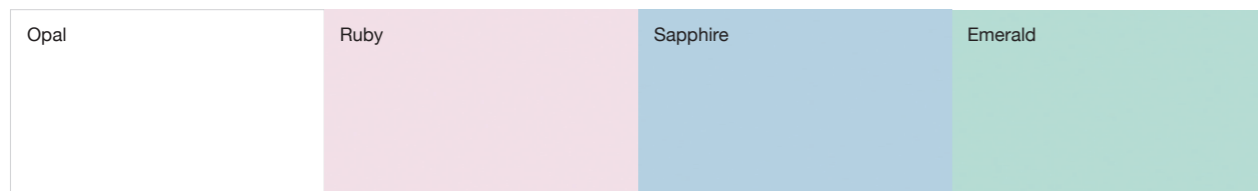
Rooibos



Banana

## LUCENT

Translucency and effective use of light are decisive design elements of contemporary architecture - the shades of the Lucent Collection, with their exceptional light translucency, allow for spectacular designs. Whether effectively backlit or simply illuminated, the Lucent colours of the architecture always add an elegant touch thanks to their characteristic effect with light.



Opal



Great spaces and installations from all over the Globe.

**Public Buildings and Offices** p.19

**Facades and Wall Cladding** p.31

**Shops and Exhibitions** p.41

**Hotel and Restaurants** p.57

**Healthcare** p.69

**Kitchen and Bath** p.77

**Furniture and Product Design** p.87

**Cultural Facilities** p.95

**HIMACS**  
in Everywhere.

PART. 1

# PUBLIC BUILDINGS & OFFICES

Complete the various and sensual public lobby and information desk by applying HIMACS. In addition, apply HIMACS to the office wall, stairway and washbasins for a unique interior point. It is crucial and strict to choose interior materials for public buildings but HIMACS is ready to use as its proved superior quality through regular product test and certification acquisition.

- 01 OFFICE [Contentful] *in Germany*
- 02 Davos Co. Real Estate *in Portugal*
- 03 Panelwork showroom *in Spain*
- 04 Office of a building company Saints-Petersburg *in Russia*
- 05 Business Center Zemelny *in Russia*
- 06 Business Center Nevka *in Russia*
- 07 SDB- Surat Diamond Bourse *in India*

01



## OFFICE CONTENTFUL

**Location :** Berlin, Germany  
**Design :** toi toi creative studio  
**Fabrication :** Markmann&Sabban Objekteinrichtung - Carpentry Work:Discher Tischlerei GmbH  
**Distributor :** Klöpfer Surfaces  
**Material :** Q001 Terrazzo Classico  
**Photography :** koy & winkel fotografie

Information desk of 'Contentful' with HIMACS

"Contentful", one of the most influential technology start up companies worldwide, have chosen HIMACS for the reception desk. The furniture elements such as the reception desk, the seating, even the integrated planters are all unique, curvy and seamless for maximum harmony with HIMACS.





## DAVOS&CO. REAL ESTATE

02

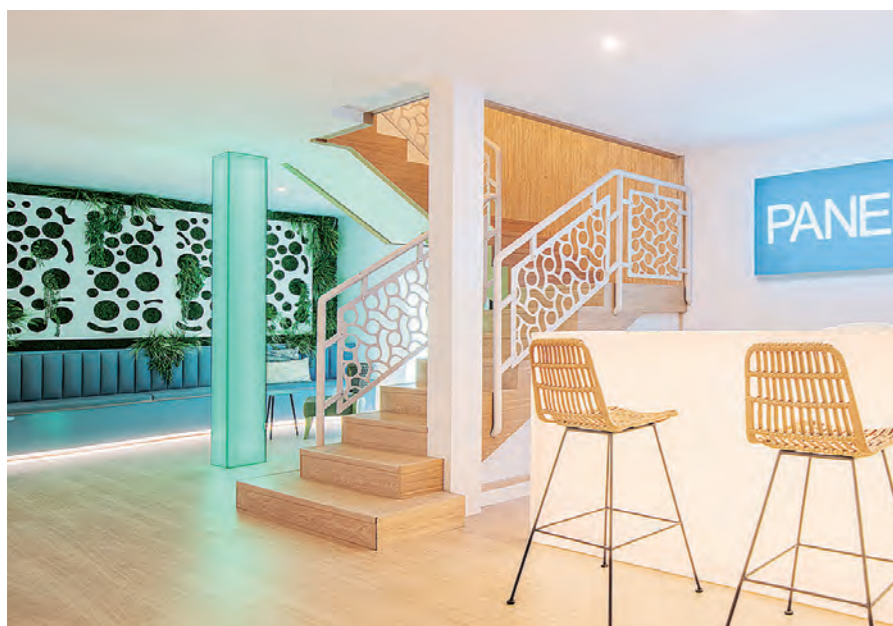


**Location :** Porto, Portugal  
**Design :** Ricardo Rios / Fernando Brandão Alves from Edição Limitada – Arquitetura e Design LDA  
**Fabrication :** JRconcept / Alumina Design  
**Distributor :** Banema  
**Material :** M603 Aurora Pavia  
**Photo Credit :** ©João Boullosa



## PANELWORK SHOWROOM

**Location :** Showroom Panelwork -  
Calle Dels Fusters, nº42 C.P.: 07500  
Manacor-Mallorca, Spain  
**Design :** Alejandra Company  
**Material :** S028 Alpine White / S035 Emerald  
**Photo Credit :** Alejandra Company



### The elegance of HIMACS in the new Panelwork showroom

“Panelwork” furniture manufacturing company’s showroom applied HIMACS at their various spaces such as columns, wall cladding, washbasins to express infinite design possibilities and creativity. The modern and ethereal aesthetics achieved with thermoformability of HIMACS, when translucent material combined with light, appear in different elements scattered throughout the showroom.

## 03



04



**OFFICE OF  
A BUILDING COMPANY  
SAINT-PETERSBURG**

Location : Saint-Petersburg, Russia  
Design : ABD architects  
Fabricator : Company <ROCK-DESIGN>  
Distributor : Company Sphinks  
Material : S034 Diamond White / S022 Black / S025 Fiery Red



# BUSINESS CENTER <ZEMELNY>

Location : Moscow, Russia  
Design : Architectural Office <UNK project>  
Fabrication : Company group <Акрил>  
Material : S028 Alpine White

05



HIMACS is suitable material for the walls and columns of a building as it's resistant to stains and contamination. By shading with a HIMACS, the wall is made more sophisticated and three-dimensional space.



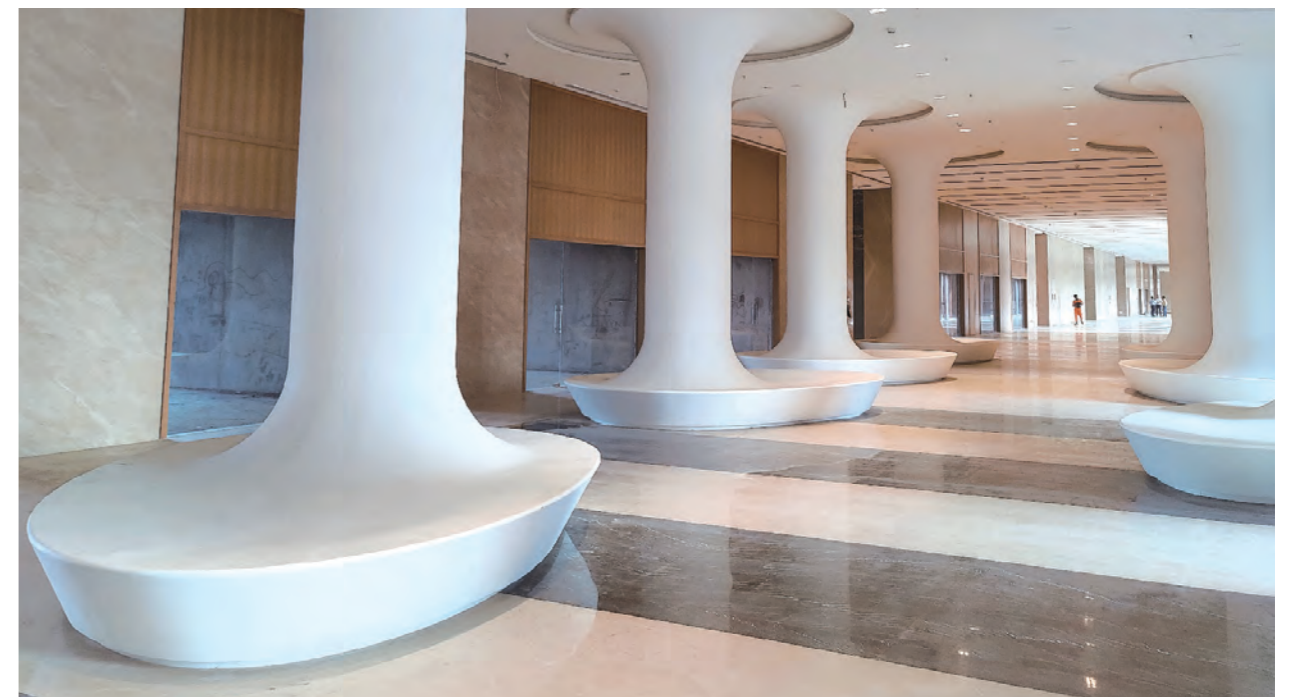
06



**BUSINESS CENTER  
NEVKA**

**Location :** Saint-Petersburg  
**Design :** Art Gluck Design Group  
**Distributor :** Sphinks  
**Material :** S302 Opal

07



**SDB -  
SURAT DIAMOND BOURSE**

**Location :** Surat, Gujrat, India  
**Design :** Morphogenesis  
**Supplier :** New Patel Saw Mill  
**Material :** S006 Arctic White  
**Application :** 3D Column Cladding



PART. 02

# FACADES & WALL CLADDING

HIMACS is highly recommended to apply on building facade and wall cladding with its durability. Also, its thermoformed processability helps to design various types of building and unique design.

- 01 Shunfeng HQ *in China*
- 02 JWmarriott jeju Resort & Spa *in Korea*
- 03 Bain De Mer, Dubai Mall *in Dubai*
- 04 Whites Laundry, Dubai Hills Mall *in Dubai*
- 05 EB Joaquim de Almeida primary school *in Portugal*
- 06 Ismaili Prayer Centre *in India*

## 01 SHUNFENG HQ

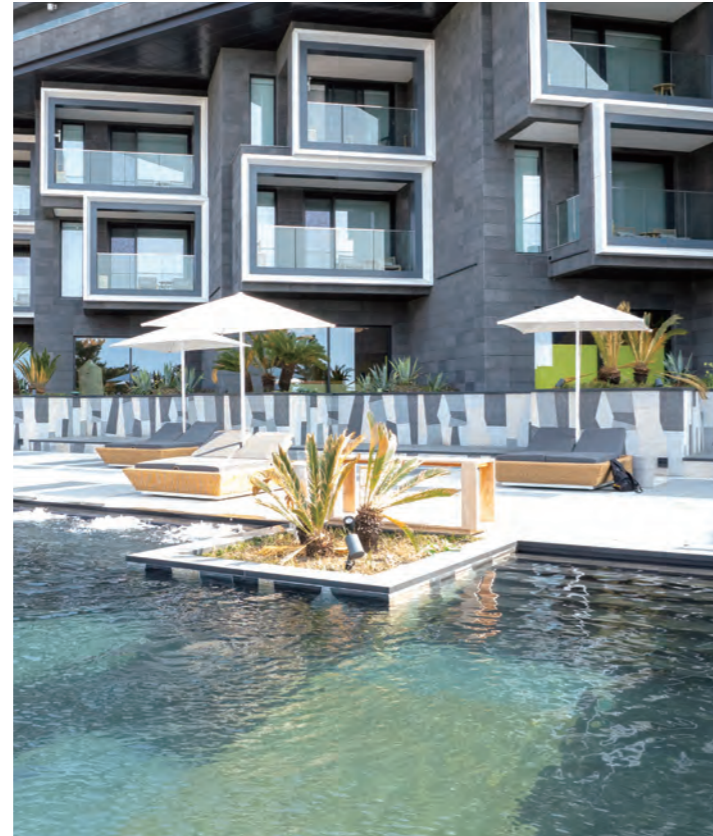
**Location :** China  
**Project name :** Shunfeng HQ, Shenzhen China  
 (Chinese Developer)  
**Material :** S006 Arctic White  
**Fabricator :** Shanghai Hannai Trading Co.,Ltd



02

# JWMARRIOTT JEJU RESORT & SPA

Location : Jeju, Republic of Korea  
Fabricator : Facadtec  
Material : S828 Alpine White (High UV Resistance)



The wall of JW Marriott JEJU Resort is built on basalt, the mascot of Jeju Island, and vivid white HIMACS to create a nature-friendly and modern look. Especially, S828 Alpine White, which has high UV resistance, is applied to the outer wall to maintain solidity from the intense sunlight of Jeju for a long time.



03

# BAIN DE MER, DUBAI MALL



Location : Dubai  
 Material : S028 Alpine White  
 Fabricator : Cube Wooden & Internal Design Accessories Industry LLC.

04

# WHITES LAUNDRY, DUBAI HILLS MALL



Location : Dubai  
 Material : S028 Alpine White  
 Distributor : Cube Wooden & Internal Design  
 Fabricator : Cube Wooden & Internal Design



## EB JOAQUIM DE ALMEIDA PRIMARY SCHOOL

05



**Spectacular HIMACS façade : traditional school architecture meets high-tech material**

“EB Joaquim de Almeida” primary school in the center of Montijos’ facade is not just an aesthetic element, but also a functional building. Its ventilated curtain wall facade gleams in triangular cut-outs as interesting geometrical design elements. The curtain wall made from the HIMACS solid surface material protects the glass facade behind it from inclement weather and provides effective shade from harsh sunlight.



**Location :** Montijo (Setúbal municipality), Portugal  
**Design :** Falanstério atelier de arquitectura; Lisbon  
**Fabrication :** Horta & Veríssimo  
**HIMACS Supplier :** Banema S.A.  
**Material :** S028 Alpine White / S022 Black  
**Photo credit :** ©Banema S.A.  
**photographer :** Tiago Casanova



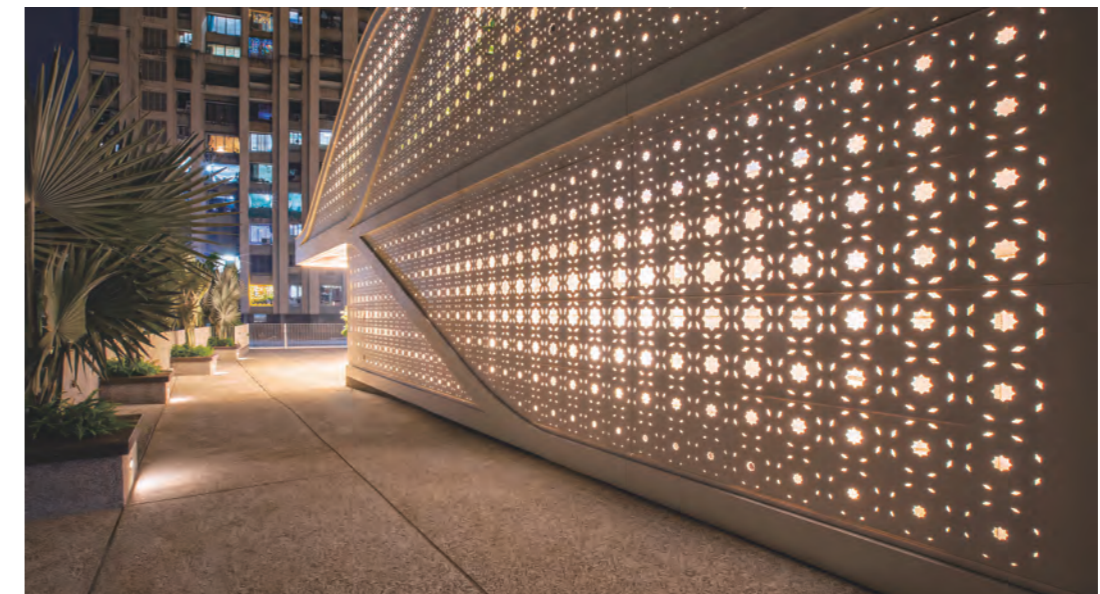


# ISMAILI PRAYER CENTRE

06



**Location :** Mumbai, India  
**Design :** NU.DE, Ar. Nooru Karim  
**HIMACS Supplier :** New Patel Saw Mill  
**Fabricator :** Equip Solutions  
**Material :** S028 Alpine White  
**Application :** Conventional Facade Cladding



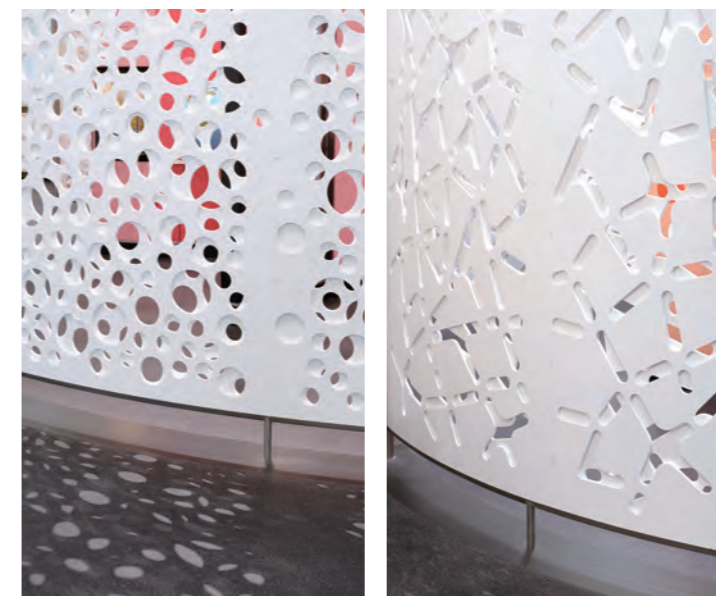
## PART. 03

SHOPS &  
EXHIBITIONS

Composed of 140 different colors are perfectly matching at various spaces such as shopping malls, department stores and franchise shops. Especially, a manual shop that needs its brand identity can choose the best fit color to express their sensibility and consistent interior. HIMACS is also widely used in exhibition halls, concert halls and museums where many people visit.

- 01 Deutsches Museum *in Germany*
- 02 Art Space Zarenkov Gallery *in Russia*
- 03 LIMEGRASS Cafe *in Korea*
- 04 Aska Showroom *in Paris*
- 05 Copenhagen Museum *in Denmark*
- 06 Ice-Cream Shop *in Korea*
- 07 Dyson Shop *in China*
- 08 Aviapark Mall *in Russia*
- 09 CMS Company *in Korea*
- 10 SUPERDUPER Hamburger Shop *in Korea*

## 01

DEUTSCHES  
MUSEUM

**Location :** Chemistry exhibition, Deutsches Museum - Munich, Germany  
**Design :** Ambos & Weidenhammer Architekten, Munich  
**Fabrication :** Körling Interiors GmbH & Co. KG, Dortmund -  
 Georg Ackermann GmbH, Wiesenbronn  
**Material :** S028 Alpine White  
**Photography :** © Stefan Müller-Naumann



## ART SPACE ZARENKOV GALLERY



**Location :** Saint-Petersburg, Russia  
**Design :** ABD architects  
**Fabrication :** Rock Design  
**Material :** S028 Alpine White / S923 Ultra Grey

## 02



03

# LIMEGRASS CAFE IN KOREA

**Location :** Yongin-si, Gyeonggi-do, Republic of Korea  
**Material :** M553 Ebony Concrete / G109 Beige Island /  
 S006 Arctic White

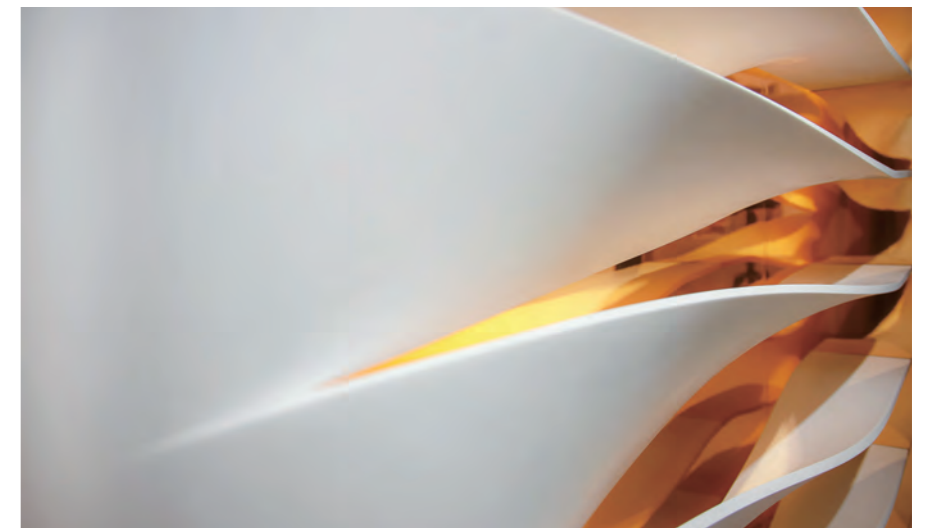
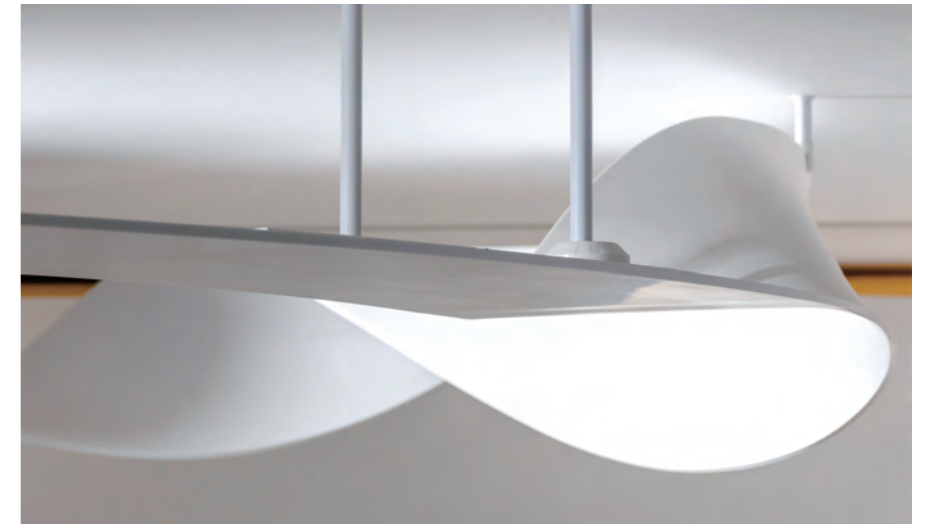
“Limegrass” a bakery cafe located in Yongin, Korea chose HIMACS for their smooth and curved center table with its processability. In addition, HIMACS is the ideal material for high traffic areas such as counters with high contact surfaces when it comes to hygiene, cleanliness and user-friendliness. It is an especially durable, stain-resistant material that is easy to clean.





04

# ASKA SHOWROOM IN PARIS



**Location :** 192 bis rue de la Roquette 75011 Paris ,France  
**Design :** ASKA Interior  
**Material :** S028 Alpine White  
**Photography :** © Grégory Pirès Photographe

# COPENHAGEN MUSEUM



Location : Copenhagen, Denmark  
 Design : JAC Studios / Johan Carlsson  
 Fabrication : YOHO, Roy Hobbs  
 Distributor : Gop Denmark A/S  
 Material : S302 Opal  
 Photography : Nicholas Løye

## The city in the new Museum of Copenhagen

HIMACS was a must in this project to precise statistics and data of the city's development as well as transport, lifestyle and the habits of the Copenhageners in the "Copenhagen Museum" because it is highly thermoformable. In addition, the museum offers an impressive backdrop to the miniature model of the city with plays of lights on HIMACS Lucent Opal shade.



## 05



06

# ICE-CREAM SHOP IN KOREA

Location : Gangnam-gu, Seoul, Republic of Korea  
Material : M603 Aurora Pavia

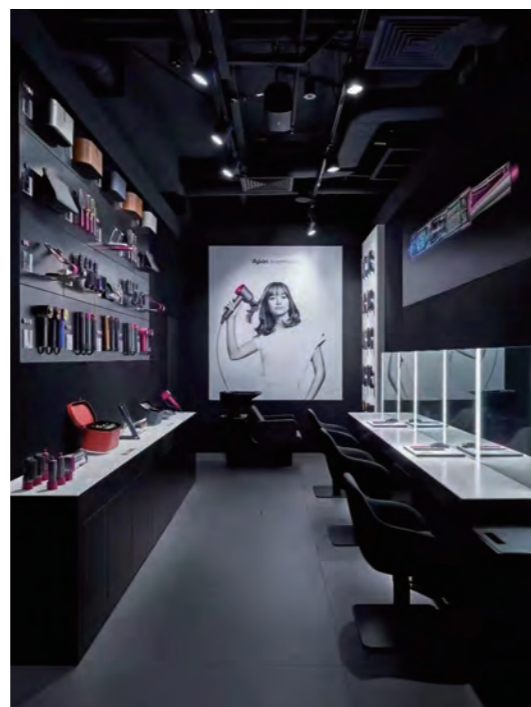


HIMACS' non-porous, stain&water resistant surface is the most ideal material to maintain the best hygienic quality at Ice Cream shops. Especially, round shaped table design reminiscent of an ice cream scoop.



**07**

**DYSON SHOP**



Location : Haikou & Wuhan, China  
 Fabricator : QingDao BaiheXinyuan Home Furnishing Co.,Ltd  
 Material : S028 Alpine White



**08**

**AVIAPARK MALL**

Location : Moscow, Russia  
 Fabrication : Acryl Group  
 Material : S034 Diamond White  
 Architectural Bureau : Blank Architecture

**09**



**CMS  
COMPANY**

**Location :** Goyang-si, Gyeonggi-do, Republic of Korea  
**Material :** M702 Aurora Frost / M613 Aurora Greige



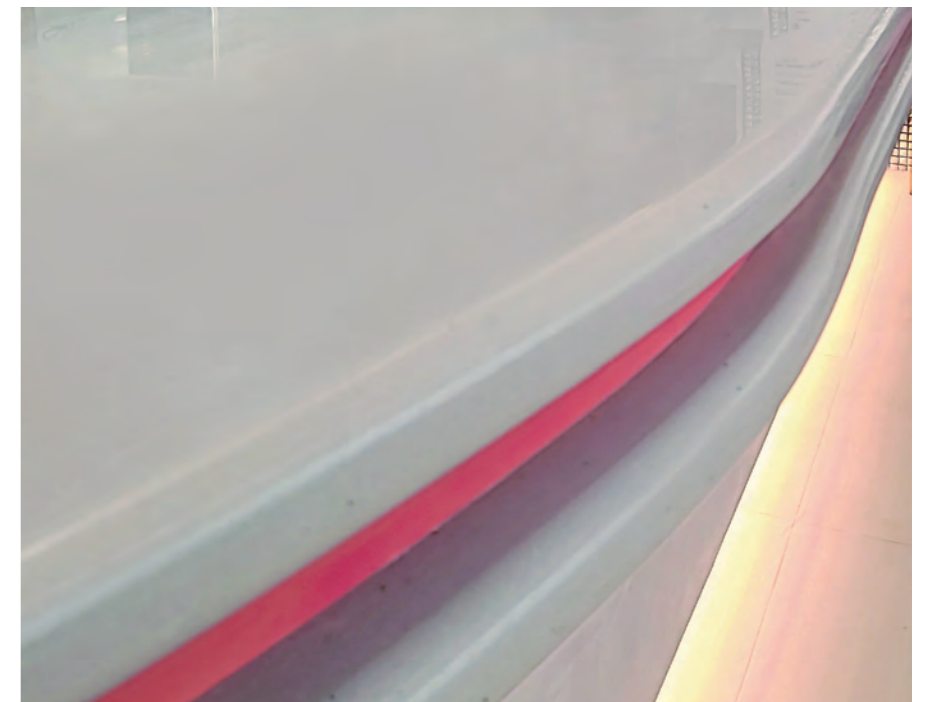
**10**

**SUPERDUPER  
HAMBURGER**

**Location :** Mapo-gu, Seoul, Republic of Korea  
**Material :** G554 Urban Concrete



Burger shop "SUPERDUPER" in Korea chose HIMACS for their countertop. Its absence of visible seams ensure a smooth, seamless look and represent the hygienic kitchen.



PART. 04

# HOTEL & RESTAURANTS

HIMACS creates high-end and elegant vibes at trendy bars, fine dining restaurants and modern clubs. HIMACS is well known in top chef restaurants, global chain hotels and resorts. The Lucent Collection will especially brighten the space with luxurious lighting.

- 01 Novosibirsk Reception desk *in Russia*
- 02 Les Olivades Marrakech *in Morocco*
- 03 ANANTI Hotel *in Korea*
- 04 The Paradise Now Bar *in Germany*
- 05 Moxy Hotel *in Portugal*
- 06 Royal Atlantis Hotel *in Dubai*
- 07 Lodha World One *in India*

01

## NOVOSIBIRSK RECEPTION DESK



**Location :** Russia, Novosibirsk  
**Design :** Vitaliy Lukashov  
**Fabricator :** Akryl-Service  
**Material :** G034 Arctic Granite  
**Photography :** Vitaliy Lukashov

# 02 LES OLIVADES MARRAKECH



**Stunning Holiday Villa in Morocco uses HIMACS for a luxurious finish**

HIMACS was used at “Les Olivades Marrakech” in Morocco for their technical and aesthetic interior and exterior. From the patio tables and curved sun loungers, to the signature garden sculptures, HIMACS’ thermoformable solid surface was chosen to reflect luxurious hideaway finish.



**Location :** Marrakech, Morocco  
**Design :** Gérard Iffrig, France  
**Fabrication :** Plan Design, Morocco  
**Material :** S028 Alpine White  
**photography :** © Creativefriends





# ANANTI HOTEL

03



Location : Gangnam-gu, Seoul, Republic of Korea  
Material : S028 Alpine White



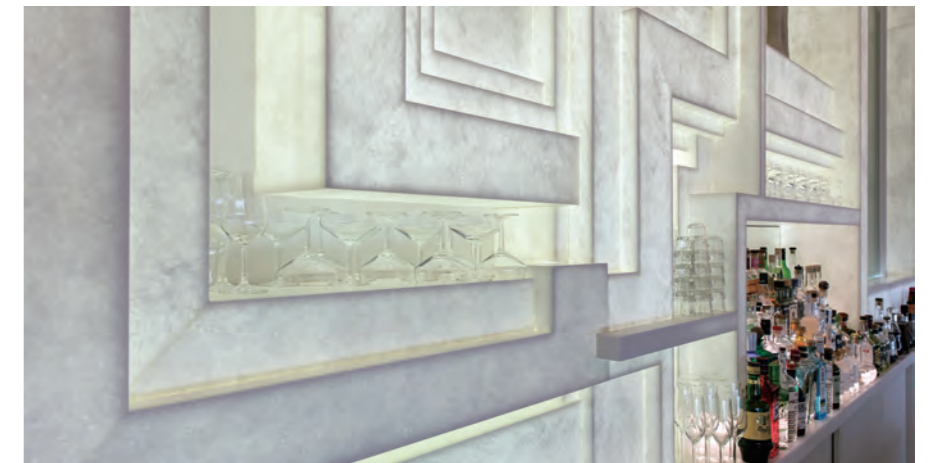


04



## THE PARADISE NOW BAR

**Location :** The Paradise Now, Düsseldorf, Germany  
**Design :** Moritz von Schrötter, Charles Bals, Walid El Sheikh  
**Fabrication :** Schreinerei Karl Heller GmbH  
**Material :** M428 Ispani / S006 Arctic White / S022 Black  
**Photography :** © Rainer Rehfeld Fotografie



05

# MOXY HOTEL

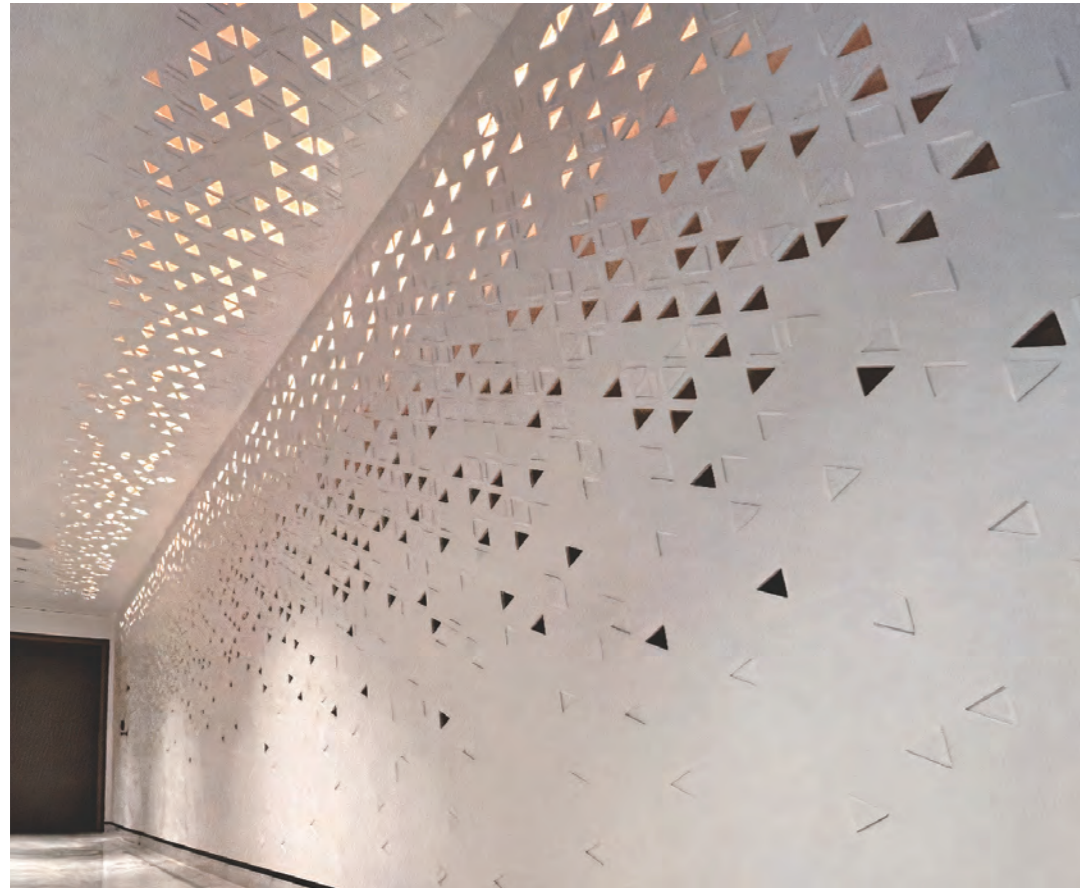
**Location :** Lisbon, Portugal  
**Design :** Broadway Malyn  
**Fabrication :** Horta & Verissimo  
**Material :** S108 Marta Grey / S028 Alpine White  
**Photography :** Tiago Casanova



“Moxy Hotel” lobby reception desk is eye-catchingly designed with reference to traditional Portuguese patterns, topped with HIMACS Solid color product. HIMACS is a robust, extremely hygienic and easy to clean solid surface material, ideal for high traffic areas like this reception desk.

HIMACS is a robust, extremely hygienic and easy to clean solid surface material, ideal for high traffic areas like this reception desk.





**06** **ROYAL ATLANTIS HOTEL**

**Location :** The Palm Jumeirah - Dubai - United Arab Emirates  
**Fabrication :** Cube Wooden & Internal Design Accessories Industry LLC.  
**Material :** S028 Alpine White



**07** **LODHA WORLD ONE**



**Location :** Mumbai, India  
**Design :** Lodha In House  
**Fabrication :** Equip Solutions  
**HIMACS Supplier :** New Patel Saw Mill  
**Material :** S302 Opal

PART. 05

# HEALTHCARE

It is crucial and strict to choose the high hygiene standard material in a health-related space. HIMACS is hygienic, preventing the build-up of germs, bacteria and pathogens from accumulating in the first place. Its nonporous surface can be cleaned with ease. HIMACS will be the first choice in the healthcare sector with its world class certification through various tests.

- 01** OSSTEM *in Korea*
- 02** National Cancer Institute *in India*
- 03** Clinic renovation Hospital *in Spain*
- 04** Group of clinics <MEDCLUB> *in Russia*
- 05** Dental Clinic *in Romania*

## 01 OSSTEM

HIMACS was the ideal choice for the hygienic and modernist first impression at the implant company "Osstem" office lobby. With the use of an HIMACS's thermoformable solid surface, a molar shaped information desk welcomed the visitors with an interesting impression.



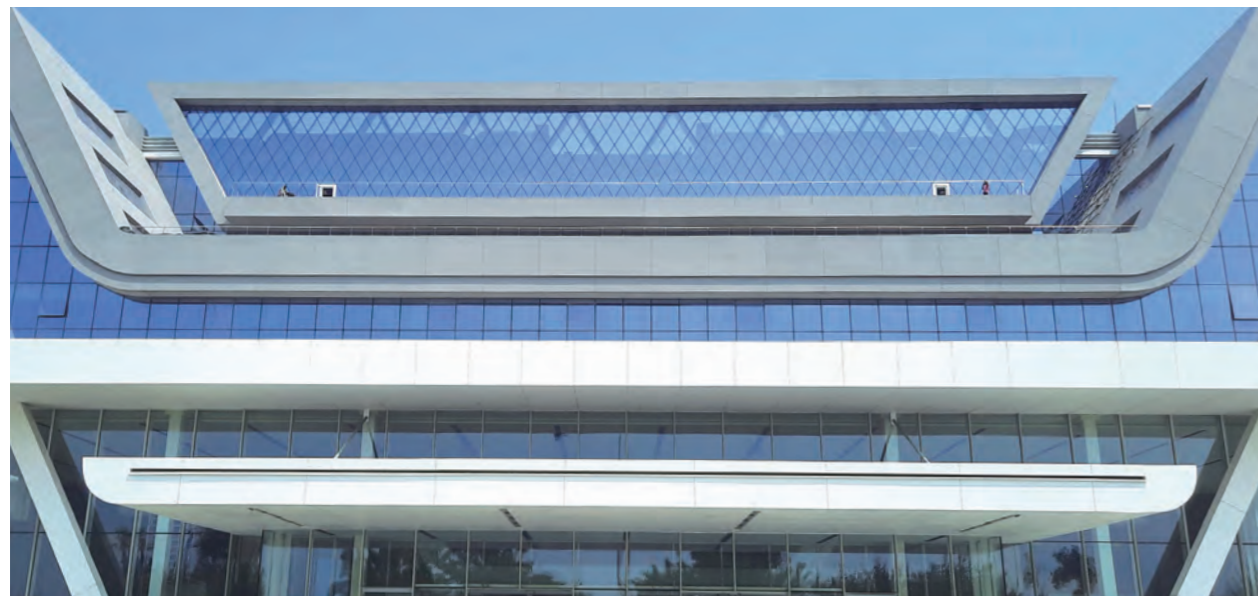
**Location :** Gangseo-gu, Seoul, Republic of Korea  
**Material :** G110 Corona  
**Application :** Information Desk

# NATIONAL CANCER INSTITUTE

02



National Cancer Institute, the first project for expansion of India public medical facilities, uses HIMACS as a major part in exterior. By applied a clean, vivid white colour to the exterior walls as a point, it provides a hygienic and public image as a public health facility.



**Location :** Nagpur, India  
**Design :** HSA - Hiten Sethi and Associates  
**Fabricator :** Equip Solutions  
**HIMACS Supplier :** New Patel Saw Mill  
**Material :** S028 Alpine White  
**Application :** Façade Cladding



### 03 CLÍNIC RENOVATION HOSPITAL



**Location :** Emergency Hospital Clinic (3RD FLOOR) Barcelona, Spain  
**Design :** Renovation architect - P. Martínez, M. Torruella, L. Gotor / Renovation designer - PMMT Arquitectura  
**Material :** S028 Alpine White  
**Photography :** © Images courtesy of PMMT Arquitectura  
**Photographer :** Pedro Pegenaute

### 04

### GROUP OF CLINICS <MEDCLUB>



**Location :** Saint Petersburg, Russia  
**Fabricator :** PROART ([www.tpk-proart.ru](http://www.tpk-proart.ru))  
**Distributor :** Sphinx  
**Material :** S028 Alpine White / G048 Beach Sand



# DENTAL CLINIC IN ORADEA

Location : Oradea, Romania  
Design : studio3plus  
Fabrication : Furniture Vision  
Material : S034 Diamond White  
Photography : © Radu Malasincu



05



PART. 06

# KITCHEN & BATH

Hygiene is the most important in the kitchen to keep well-being for preparing families dining. HIMACS' non-porous, stain & water resistant surface is the most ideal material to maintain the best quality of a hygienic kitchen. Also, you can keep your bathroom basin clean and comfortable through its special feature.



- 01 Envol Kitchen Project *in France*
- 02 Netherland HIMACS Kitchen *in Netherlands*
- 03 Residential Project *in Chennai*
- 04 West End Flat *in Scotland*
- 05 Yanlord Apartment Complex *in China*
- 06 SISYPHE Perfume Shop *in Korea*
- 07 AUGEO Art Space *in Italy*

01



## ENVOL KITCHEN PROJECT

**Location :** Fuveau, Provence-Alpes-Côte d'Azur, France  
**Design :** Charlotte Raynaud Hegenbar  
**Fabrication :** Menuiserie Hegenbart  
**Distributor :** Mobistrat  
**Material :** M428 Ispani / G100 Peanut butter  
**Photography :** © Denis Dalmasso



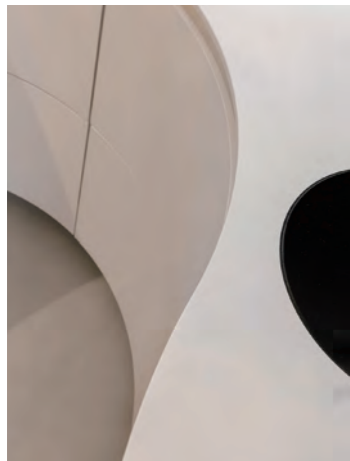


02

NETHERLAND  
HIMACS KITCHEN

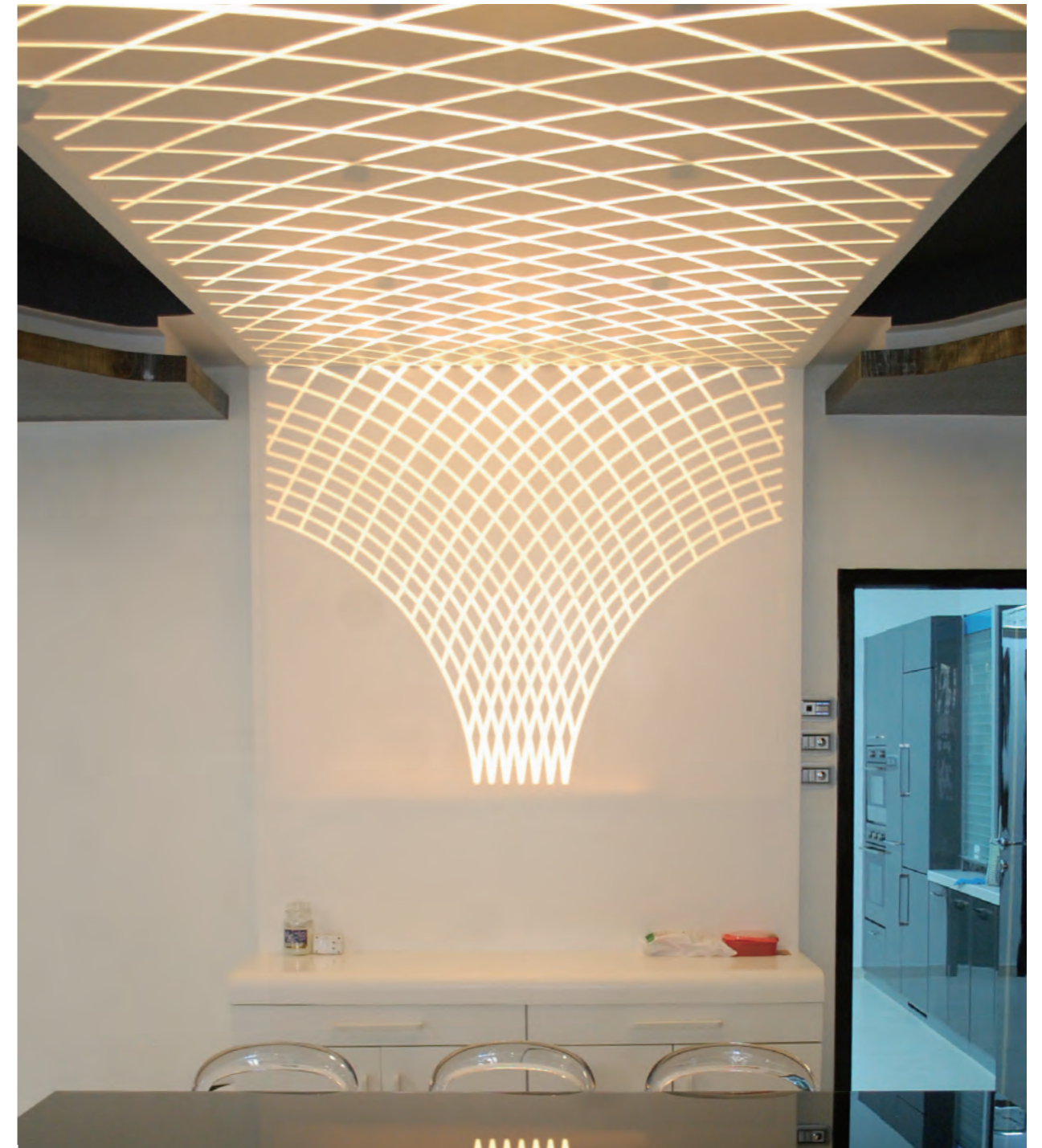


**Location :** Purmerend, The Netherlands  
**Design :** Interior designer Trix van der Mark of Bone Interieurwerken / Bone Solid  
**Fabrication :** Bone Solid / Bone Interieurwerken  
**Distributor :** Baars & Bloemhoff  
**Material :** S028 Alpine White  
**Photography :** © Wouter van der Sar



03

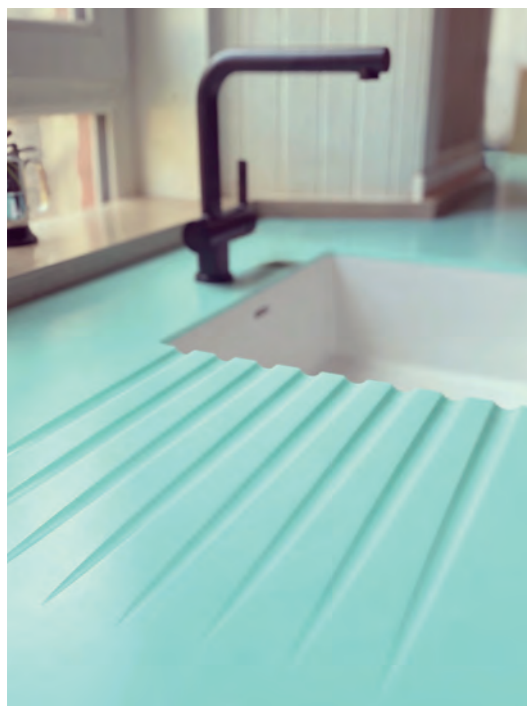
RESIDENTIAL PROJECT  
IN CHENNAI



**Location :** Chennai, India  
**Fabrication :** Sakthi Creation  
**Distributor :** Jain simply  
**Material :** S028 Alpine White

**04**

**WEST END FLAT  
IN GLASLOW**



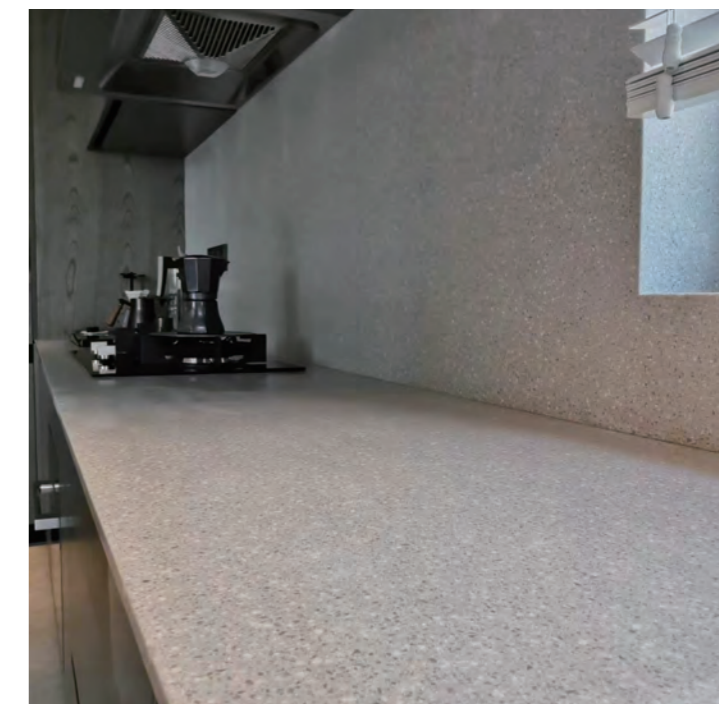
Location : Glasgow, Scotland  
Design : Clare Mortonone  
Fabrication : KitCaboose Kitchens - Three Four Five Furniture  
Material : S305 Emerald  
Photography : Claire Higgins



**05**

**YANLORD  
APARTMENT  
COMPLEX**

Location : Shanghai, China  
Fabricator : Nanjing Wuke Decoration Materials Co.,Ltd  
Material : M606 Aurora Bianco / M702 Aurora Frost  
M614 Aurora Umber / VA01 Santa Ana



06



## SISYPHE PERFUME SHOP

**Location :** Yongsan-gu, Seoul, Republic of Korea  
**Material :** M627 Aurora Butter Cream

The concept for "SISYPHE Perfume Shop" was created with the aim of "Relaxation" in the city center by providing a private hot-tub and aroma perfume class. HIMACS was used for a pleasant and hygienic space interior. Harmoniously surrounded by HIMACS creates a nature-friendly atmosphere.



**07**

# AUGEO ART SPACE

**Location :** Rimini, Italy  
**Design :** Yasmine Mahmoudieh, Studio Mahmoudieh  
**Fabrication :** Dform Srl, Italy  
**Material :** S028 Alpine White  
**Photography :** Riccardo Gallini



PART. 07

# FURNITURE & PRODUCT DESIGN

Create the only one designed furniture with HIMACS.  
Its processability helps to create luxurious objects  
such as half-moon shaped door handles, curved benches  
and various furniture in the bathroom through 3D thermoforming.

- 01** BRANDSPACE *in Korea*
- 02** Aurora Sink & Chair *in India*
- 03** CURVE Bench *in UK*
- 04** Bathroom Accessory Collection
- 05** Novosibirsk Table *in Russia*
- 06** Installation for the Emerald Forest Hotel *in Russia*

**01**

## BRANDSPACE AURORA DOOR HANDLE



Location : Seoul, Republic of Korea  
Material : M617 Aurora Blanc

**02**

**AURORA SINK & CHAIR**

Location : Chennai, India  
Fabrication : Goldstone  
Distributor : Jain simply  
Material : M617 Aurora Blanc / M605 Aurora Sanremo



Location : Chennai, India  
Fabrication : Goldstone  
Distributor : Jain simply  
Material : M603 Aurora Pavia

**03**



Location : UK  
Design : Nina Moeller, UK  
Fabrication : Qubicle, UK  
Material : S028 Alpine White  
Photography : © Marcus Peel

**CURVE BENCH**

04

# BATHROOM ACCESSORY COLLECTION



Design : Marike Andeweg, Not Only White  
Material : S028 Alpine White / S002 Almond / S303 Sapphire / S302 Ruby / S100 Coffee Brown / S115 Deep Indigo  
Photo credits, Photography : Not Only White



05



**NOVOSIBIRSK TABLE**

Location : Novosibirsk, Russia  
 Fabricator : Akryl-Service  
 Design : Vitaliy Lukashov  
 Material : M603 Aurora Pavia  
 Photo Credit : Vitaliy Lukashov

06



**INSTALLATION FOR THE EMERALD FOREST HOTEL**

Location : Saint-Petersburg, Russia  
 Design : Acryl Group  
 Material : M613 Aurora Greige



PART. 08

# CULTURAL FACILITIES

HIMACS has a color spectrum around 140 charts which can be used in movie theaters, entertainment facilities and cultural centers to create dynamic and magnificent interiors. Especially, try to create an attractive space with HIMACS Lucent Collection's light translucent appearance!



## 01 MIRAGE CINEMA

Location : Saint-Petersburg, Russia  
 Fabrication : ТПК ПроАрт  
 Material : S302 Opal

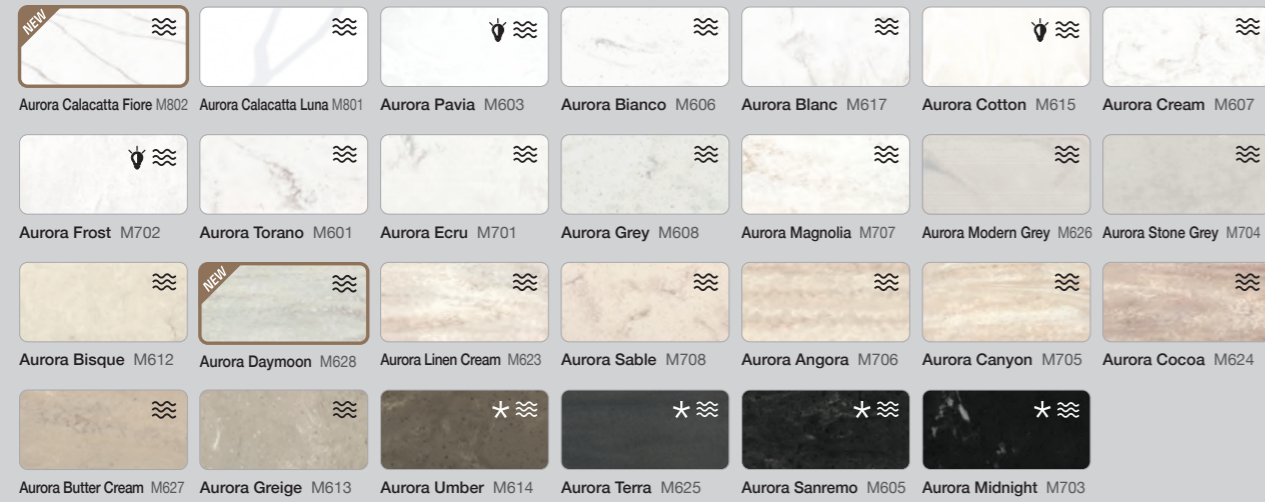
### Renovated cinema <Mirage on the Bolshoi> opened in St. Petersburg

Two suspended columns 5 and 7 meters, a reception desk and a checkroom counter were made of light-conductive acrylic stone HIMACS Opal S302. And also: 8 columns-pointers and three entrance portals to the halls. A total of 80 sheets of material were used



# HIMACS COLOURS

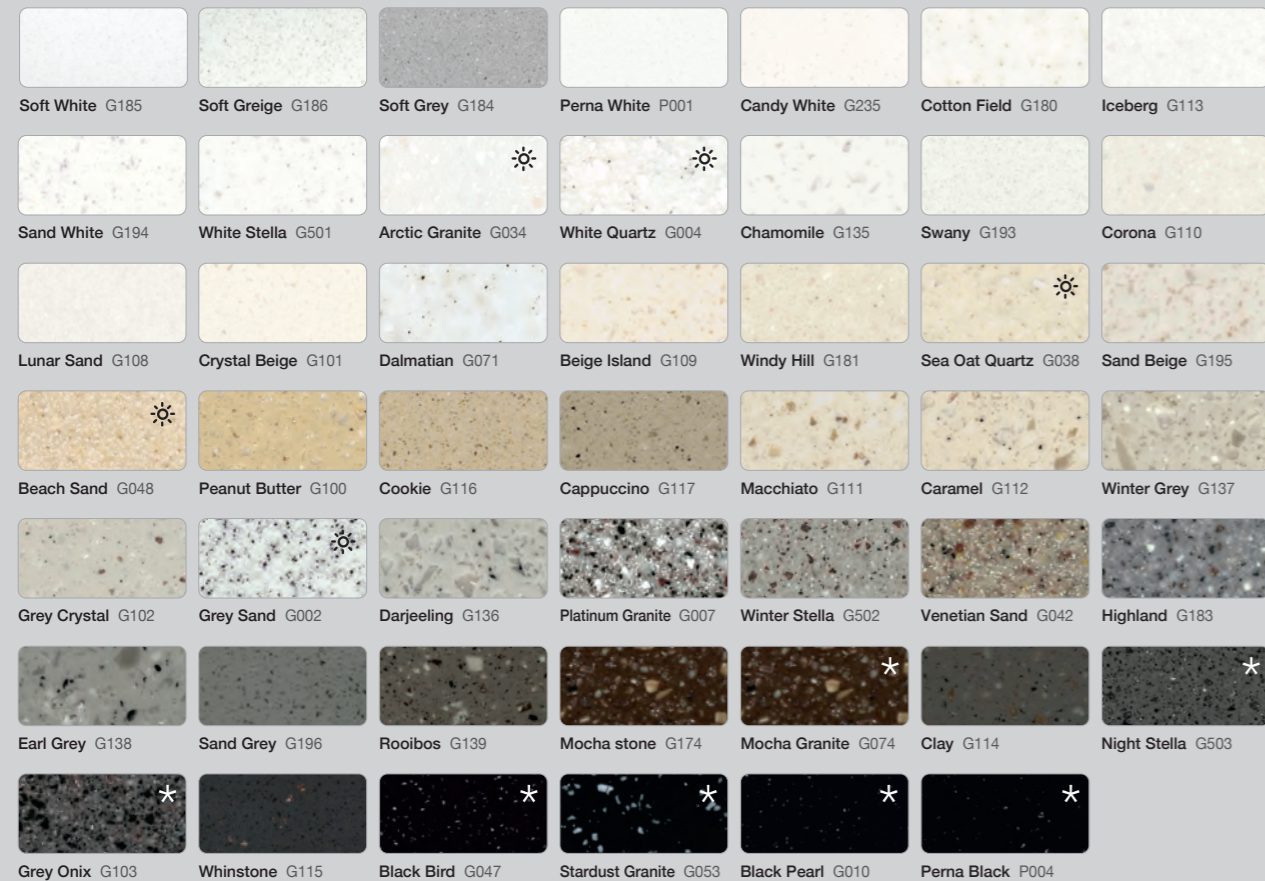
## Aurora



## Gravilla

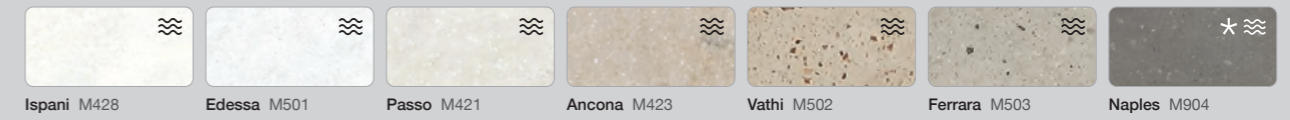


## Granite

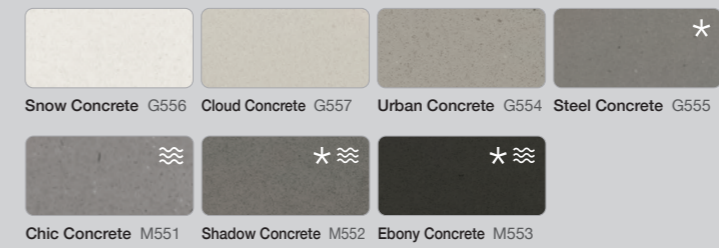


✦ Less suitable for surfaces which are subject to high traffic, due to their higher pigmented colour saturation, marks may be seen more easily.  
 ✧ Suitable for exterior use. Please check conditions about level of suitability and warranty per colour.  
 ≡ As Marmo is a randomly veined product, specific fabrication guidelines need to be followed. Ask your sales partner for more information.  
 ✨ Lucent colours have a higher level of translucency, more evident when combined with light source.  
 ✨ Colours with this mark have a semi-translucent effect, evident when combined with light sources.  
 ● Design Collection by Marcel Wanders.

## Marmo



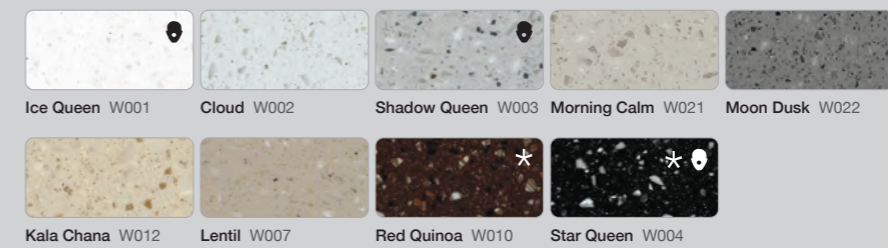
## Concrete



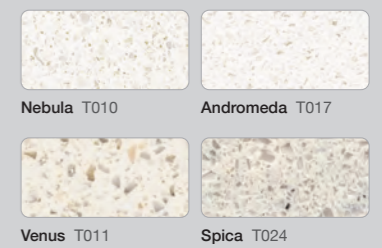
## Volcanics



## Lucia



## Aster



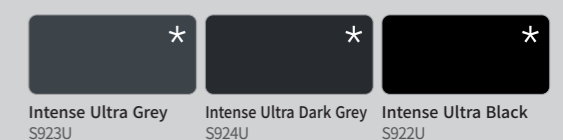
## Solid



## Lucent



## Intense Ultra



## PRODUCT SPECIFICATION

The perfect basis for your ideas : our comprehensive range of sheets.

### Standard Formats

760 x 2490mm

910 x 2490mm

760 x 3000mm

1350 x 3000mm

760 x 3680mm

910 x 3680mm

1350 x 3680mm

1520 x 3680mm

### Sheet Material

HIMACS is available in different thicknesses, formats and sizes. Perfect for maximum cutting and minimal costs. However, not all colours are available in every thickness. See the table for availability below. HIMACS sheet material is available in thicknesses of 6mm, 12mm and 20mm as well as the corresponding sheet formats.

#### Dimensions - Standard Format

SHEET THICKNESS (mm)	SHEET WIDTH (mm)	SHEET LENGTH (mm)
6	760	2490 *
	910	2490 **
	1350	3680 **
	1520	3680 **
12	760	3680 ***
	910	3680 ****
	1350	3680 ****
	1520	3680 ****
20	760	3000 *****

- \* Only available in Solid, Granite, Lucent, Concrete (G554, G555, G556, G557)
- \*\* Only available in Solid, Granite, Concrete (G554, G555, G556, G557)
- \*\*\* Available in all colours including S928 & S728
- \*\*\*\* Only available in S928, Solid, Granite, Concrete (G554, G555, G556, G557)
- \*\*\*\*\* Only available in Solid, Granite, Lucia, Volcanics, Concrete (G554, G555, G556, G557)

## CERTIFICATIONS



### Environmental Building Certificate – Grade “outstanding”

The Korean Air Cleaning Association certifies that HIMACS complies with the Korean regulations for environmental building materials.



### ETA

Fixed with Keil inserts and a BWM structure, HIMACS facade in S728 - Alpine White successfully passed the ETA tests (European Technical Agreement).



### Greenguard

HIMACS has been approved by Greenguard in the USA, as a “low emitting product”. The organisation establishes acceptable indoor air standards for indoor products, environments and buildings. The organisation’s goal is to improve public health and quality of life through programs that improve indoor air.



### IMO MED – Modules B and D

MED stands for Marine Equipment Directive. Both modules are extremely important for the shipbuilding industry, as they are mandatory for fabrication materials used in ships. IMO B covers the fire resistance of the material per se and certifies that the material has low flame spread characteristics and is not capable of producing excessive quantities of smoke and toxic combustion products. Module D covers the overall production capacity and checks, among other production processes, the management and systems used.



### NSF

NSF standards are generally accepted norms for a variety of public health related industries and fields. These include drinking water treatment and contact with materials, food equipment manufacturing etc. NSF recognises that HIMACS complies with NSF norms.



### SCS

This is a certification related to the use of recycled raw materials. A total of six products, including 3 types of Granites and 3 types of Volcanics, have been certified as SCS recycled raw materials using more than 10% recycled artificial marble raw materials during production from SCS Global Service in the U.S.

# LX HAUSYS GLOBAL NETWORK

	ADDRESS	Email
LX Hausys Headquarters	98, Huam-ro, Jung-gu, Seoul, Republic of Korea, 04637	surfaceinfo@lxhausys.com

GLOBAL NETWORK	ADDRESS	TEL
LX Hausys America, Inc. (Atlanta)	900 Circle 75 Parkway, Suite1500, Atlanta GA 30339	1-678-486-8244
LX Hausys Europe GmbH (Frankfurt)	Lyoner strasse 15, Atricom C6, 60528 Frankfurt am Main, Germany	49-69-58302-90
LX Hausys China Trading Co., Ltd. (Shanghai)	Room 702-703, Building T3, No.16, Lane77, Shangkun Road, Minhang District, Shanghai, 201101 China	86-21-5241-6600
LX Hausys Russia, LLC (Moscow)	Lesnaya Plaza 8th floor, 4, 4th Lesnoy pereulok, Moscow, 125047, Russia	7-495-663-3958
LX Hausys India, Ltd. (Gurgaon)	Unit 701 ,7th floor, Emaar Digital Greens Tower B, Golf course extension Road, Sector 61, Gurgaon 122102	91-124-469-4200
LX Hausys Japan Office (Tokyo)	Tokyo Sankei Building 25F, 1 Chome 7-2 Otemachi, Chiyoda City, Tokyo, 100-0004 Japan	81-3-5299-4533

