



 **LG Hausys**

www.himacs.eu

HI-MACS®

General Brochure 2021

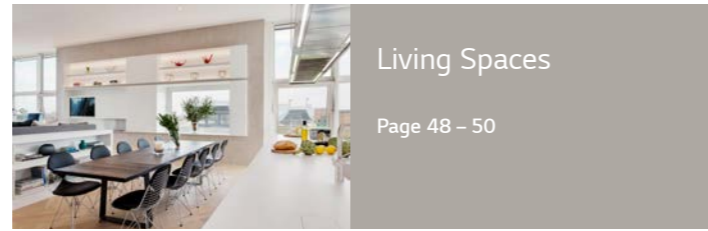
Great ideas made possible
with HI-MACS®



Natural Acrylic Stone™

HI-MACS® General Brochure 2021

What is HI-MACS®?	Page 03
HI-MACS®. Because Quality Wins.	Page 04
Material Properties	Page 05
Working with HI-MACS®	Page 06
HI-MACS® Quality Club	Page 07
Ecology and Recycled Colours	Page 08
Hygienic Properties	Page 10
HI-MACS® Collections 2021	Page 11 – 27
HI-MACS® Projects	Page 28 – 61
LG Hausys Network	Page 62
Specifications	Page 63 – 65
HI-MACS® Colours	Page 66 – 69
Sinks & Basins	Page 70 – 73
Baths & Shower Trays	Page 74 – 75
Contact	Page 76



Living Spaces

Page 48 – 50



Furniture and Lighting

Page 51



Kitchen

Page 52 – 53



Bathroom

Page 54 – 55



Airport

Page 56 – 57



Outdoor

Page 58



Marine Industry

Page 59



Best of the Last Decade

Page 60 – 61



Public Buildings and Offices

Page 29 – 32



Shops and Exhibitions

Page 33 – 35



Façades and Wall Cladding

Page 36 – 37



Hospitality and Gastronomy

Page 38 – 41



Healthcare

Page 42 – 45



Education and Cultural Places

Page 46 – 47

What is HI-MACS®?

An outstanding material.

HI-MACS® is a delicate composition of acrylic, minerals and natural pigments that combine to create a smooth, non porous, thermoformable and visually seamless surface.

The material meets the highest standards for quality in all respects: material performance, fabrication, functionality and hygiene. Thanks to these qualities and the outstanding flexibility in fabrication and design, HI-MACS® offers countless advantages over conventional materials.

And an ongoing inspiration.

We have gathered a number of projects here, all of which are capable of inspiring and creating a desire to tread new paths.

HI-MACS®. Because Quality Wins.

Photographed by Rafael Krötz



Quality is the longest warranty in the market.
We support our Quality Club Members with a 15 year warranty.

Quality is in our DNA.

HI-MACS® benefits from the high-tech infrastructure and development-experience of the LG Group who regularly bring stunning innovations to life. LG guarantees superior quality for all raw materials; the acrylic in HI-MACS® is produced by our own factories, certifying excellence from the source.

Quality is availability.

We stock the entire colour and product range in one European central warehouse and 40 local warehouses in Europe.

Quality is worldwide support.

Full access to LG after-sales support and fabrication network worldwide.

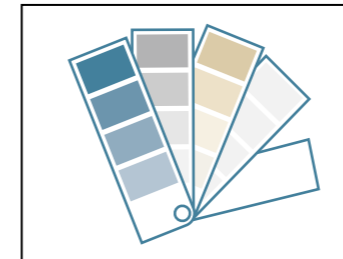


Quality is an excellent network of highly skilled craftsmen.

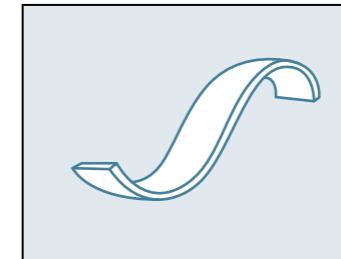
Our highly skilled fabrication partners enjoy regular training to provide you with the best possible product. They have access to the best in class training material and support. The most skilled fabricators of HI-MACS® are easy to identify as they are certified members of the HI-MACS® Quality Club. Contact us for your nearest member.

The excellent qualities of HI-MACS® at a glance

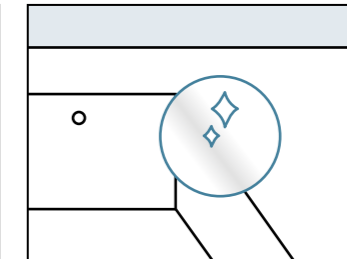
Design



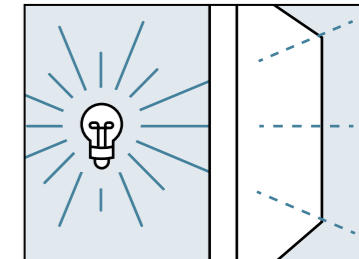
Huge colour spectrum



Three-dimensional design for complete design freedom



Visually seamless joining of sheets and flush installation of sinks and basins

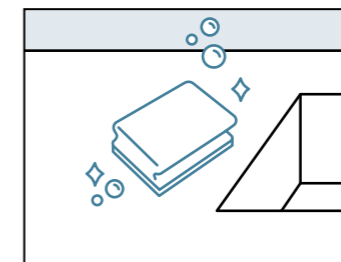


Spectacular light effects thanks to translucence

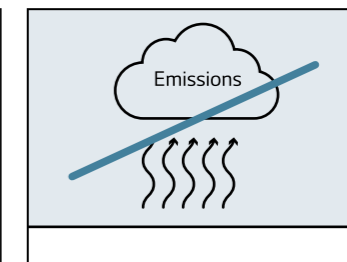
Performance



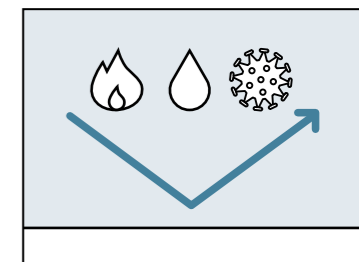
Robust and durable



Easy cleaning and exceptional hygiene properties

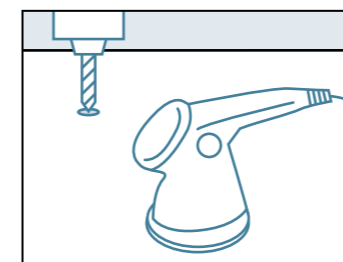


Free of emissions, formaldehyde and nanoparticles



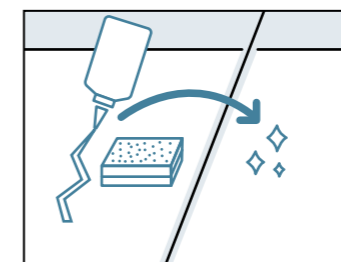
Fire-resistant, impervious to liquids and resistant to germs and chemicals

Fabrication

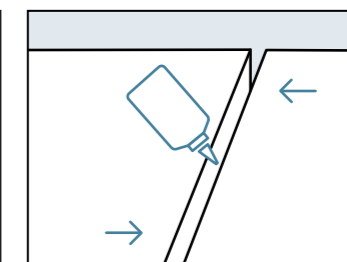


Easy to process with hardwood tools

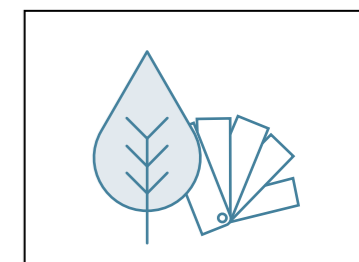
Sustainability



Easy to restore and repair



Off cuts can be reused reducing waste



Recycled colours available

Working with HI-MACS® is easy.
Everything you need will already be in your workshop.



As a woodworking expert, you only need to open your workshop to find everything you need: talented craftsmen, and tools for working with hardwood. That's all you need to saw, drill and sand this material.

And if you have a pre-heating oven or a heating press, then you'll find it easy to heat the material for thermoforming. That's all there is to it: the carpentry workshop that once specialised in timber materials, is transformed in an instant into a company that can also offer modern stone products as well.

Welcome to the HI-MACS® Quality Club.

The members of the HI-MACS® Quality Club are our closest partners when it comes to working with the material and experiencing its tangible benefits:

- We train our partners with a comprehensive training programme, the best trainers and the best working manual.
- We cooperate closely with our Quality Club members on all material and work-related questions and guarantee comprehensive technical support.
- We also actively support our partners in sales, including forwarding specific project enquiries.
- Our partners benefit from our Europe-wide marketing and communication strategy: PR, traditional advertising, online communication, social media, as well as involvement in all the relevant industry events.
- Partners who belong to the HI-MACS® Quality Club are exclusively able to offer a 15-year material guarantee and thus gain a crucial competitive edge when pitching for projects.



Join the HI-MACS® Quality Club!
Certify your fabrication expertise by taking part in our Training Programme and become a HI-MACS® Quality Club Member.



Those who think green create an entire eco-system.

LG is a global pioneer in ecologically responsible action and consistently demonstrates this attitude. From production to transport and disposal, HI-MACS® meets the highest ecological standards, making it the model pupil of its kind.

©iStockphoto - 4maksym

Quality means thinking about tomorrow today.

- 1. material composition:** HI-MACS® consists of 67% natural minerals, 30% finest acrylic and 3% natural colour pigments.
- 2. material safety:** HI-MACS® is completely free of formaldehyde, VOC emissions and nanoparticles, ensuring particularly high indoor air quality.
- 3. manufacturing process:** HI-MACS® is produced in an energy-efficient and resource-saving manner. This includes consistent waste reduction, the recycling of pre-industrial off-cuts and water savings. The production plants themselves – such as those in Cheongju (Korea) or Atlanta (USA) – also comply with all environmental guidelines.
- 4. logistics:** Whether in transport or logistics, our selected partners meet the highest ecological standards.
- 5. processing:** The material allows for virtually waste-free processing. In addition, HI-MACS® installations are extremely strong and durable. They can easily be renewed to their original appearance, meaning they don't have to be replaced, thus giving a positive long-term environmental footprint.

DGNB: German Sustainable Building Council [Deutsche Gesellschaft für Nachhaltiges Bauen]
 BREEAM: Building Research Establishment Environmental Assessment Method
 LEED: Leadership in Energy and Environmental Design

6. certificates, environmental product declarations and regular tests:

DGNB German Sustainable Building Council (DGNB)
 HI-MACS® has achieved quality level 4 of 4 – the best rating – for the local environmental impact of the overall product (2018). The DGNB system is a holistic and unique certification system for sustainable construction.

BREEAM Building Research Establishment Environmental Assessment Method (BREEAM)
 delivered by bre
 Among other ratings, the material complies with "Hea 02 Indoor Air Quality" for particularly good air quality. BREEAM is one of the world's most important global rating methods for sustainable architecture.

LEED Leadership in Energy and Environmental Design (LEED)
 Is a standard voluntary system to certify high performance of buildings, from the US Green Building Council (USGBC). LEED certifies buildings using a credit system. Architects and planners using HI-MACS® for their project can claim EQ Credit for Low-Emitting Materials with the category Indoor Environmental Quality (EQ).

IBRC Environmental Building Certificate – Grade "outstanding"
 The Korean Air Cleaning Association certifies that HI-MACS® complies with the Korean regulations for environmental building materials.



The colour choice for a positive ecological balance.

Sustainable design through consistent recycling.

With HI-MACS® you not only have an infinite number of different shades to choose from, but you can also opt for a particularly sustainable design thanks to our range of recycled colours.

HI-MACS® recycled colours are durable, colourfast, and easy to maintain. They offer the same outstanding properties and green credentials as our standard HI-MACS®, but in addition contains up to 16% of preconsumer recycled material and are certified by the SCS Global Services for stated recycled content.

Natural and sustainable colours

LG Hausys has particularly environmentally friendly solutions in its product range: the colour palette of natural and earth recycled tones can be found on page 68.

* Greenguard certification ensures that indoor products do not exceed the limits for chemical emissions.
 ** Leadership in Energy and Environmental Design (LEED) for more information see page 8.

- ◆ HI-MACS® recycled colours are also GREENGUARD* Certified for Indoor Air Quality.
- ◆ HI-MACS® recycled colours can provide LEED*** credits in sustainable design.



HI-MACS®. The solid surface material for a particularly hygienic environment.

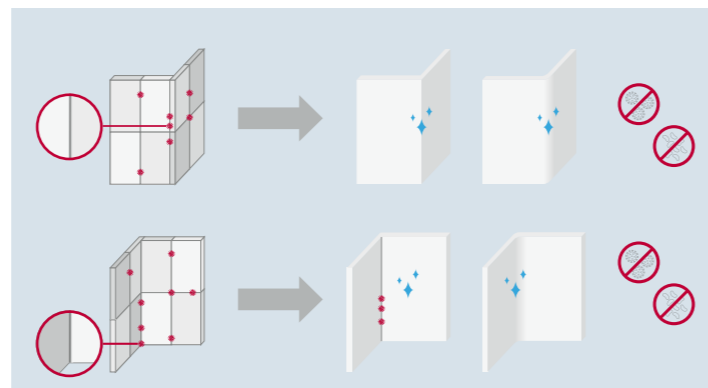
Especially suitable for decontamination of dangerous viruses such as HIV-1 and SARS-CoV-2

No chance for dirt and pathogens.

HI-MACS® is resistant to mould, dirt, viruses, bacteria and numerous chemicals and has been internationally certified*.



Seamless production for easy cleaning.



The hygienic properties of HI-MACS®.

Seamless, easy-care finish

HI-MACS® has a smooth, scratch-resistant and pore-free surface: liquids and germs cannot penetrate. Seamless processing prevents bacteria or mould from settling and enables thorough and quick cleaning so that cross-contamination and germs during treatments have no chance.

UV-C Disinfection method

The UV-C method is a physical sterilization procedure that utilizes UV rays. It kills microorganisms such as germs, viruses and bacteria quickly and effectively. The unique properties of HI-MACS® S828 UV+ allow the use of this highly effective method.

Chemical resistance

HI-MACS® can be maintained using the strongest detergents, from household chemicals to those used to clean operating theatres, while retaining a "like-new" appearance.

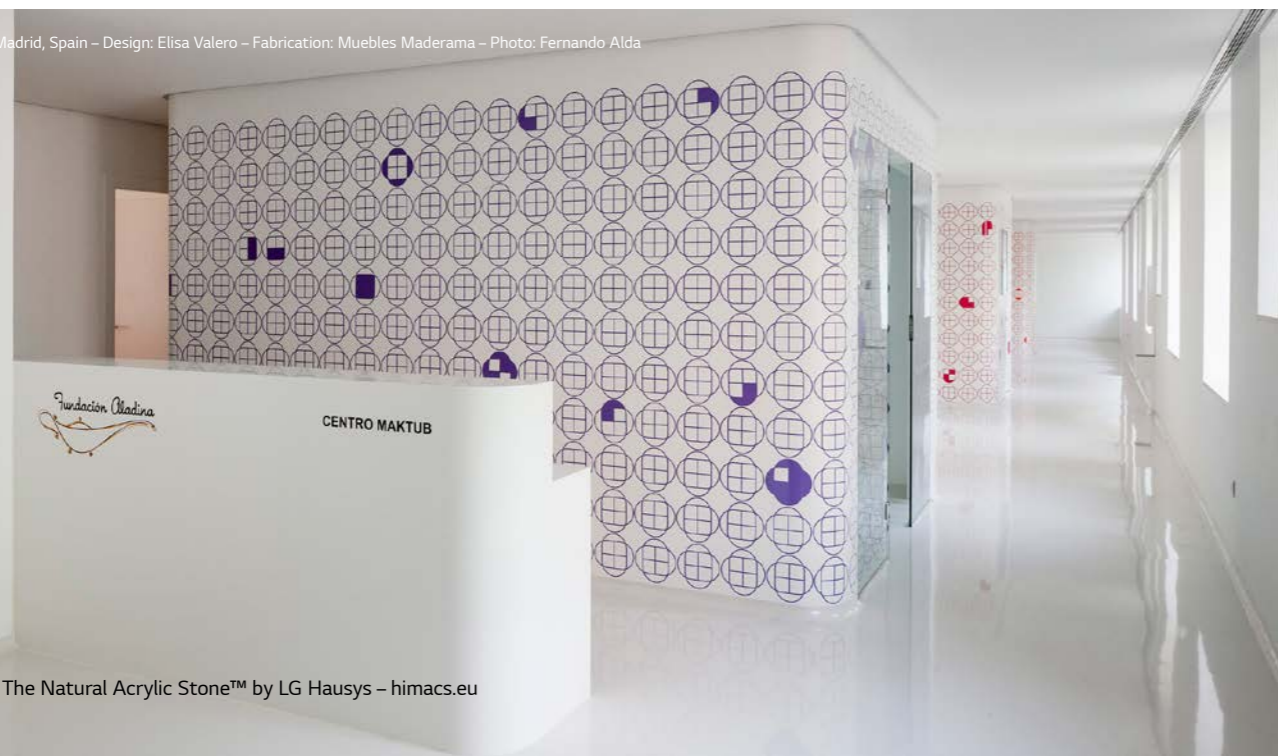
Functionality meets design

With its flexible formability and wide range of colours, HI-MACS® offers exceptional design possibilities and all the prerequisites for a sterile environment.

* certified by an independent laboratory, according to the international standards LGA and NSF

Further information on this topic can be found in our "Healthcare" brochure and at www.himacs.eu.

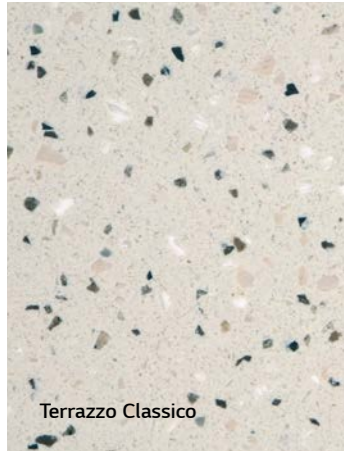
Niño Jesús Hospital, Madrid, Spain – Design: Elisa Valero – Fabrication: Muebles Maderama – Photo: Fernando Alda



The HI-MACS® Collections 2021.

More than the sum of the parts.

TERRAZZO COLLECTION



Terrazzo Classico



Terrazzo Grigio

Terrazzo has a long tradition as a material aesthetic: the coarse-grained look has offered the perfect blend of longevity and elegance since antiquity. HI-MACS® has now adopted the trend with two colours, which both combine perfectly with their typically coarse-grained, 'splattered' look. The Terrazzo Collection is especially suitable for the hospitality and gastronomy sector, as well as for any other high-traffic public building.



STRATO COLLECTION



Strato Cloud



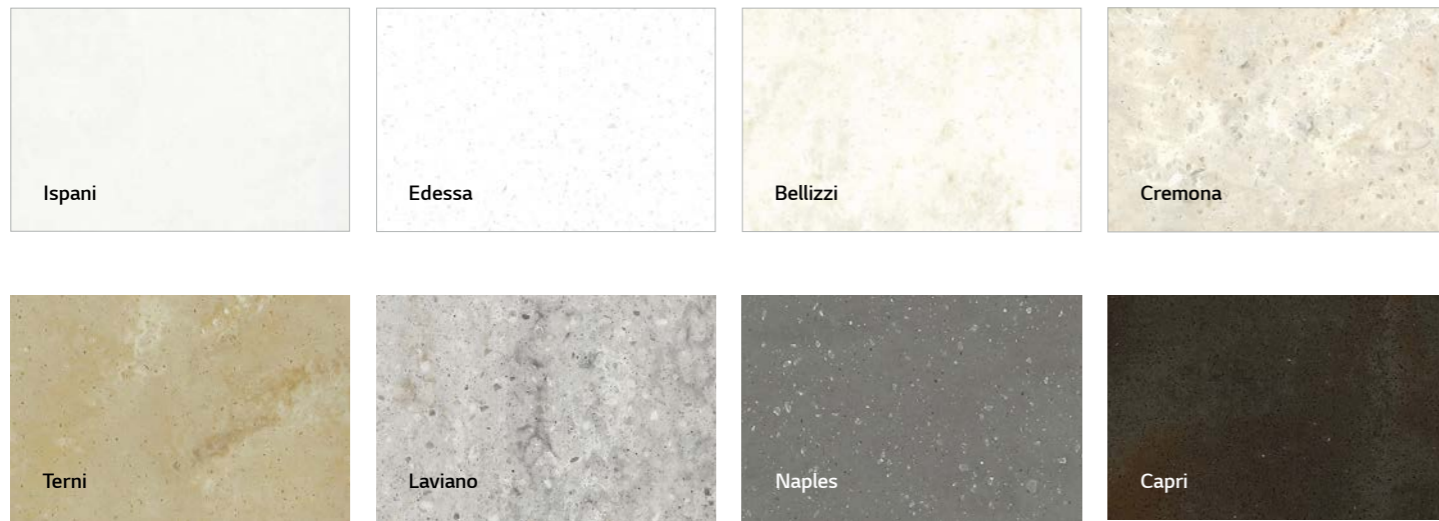
Strato Wind



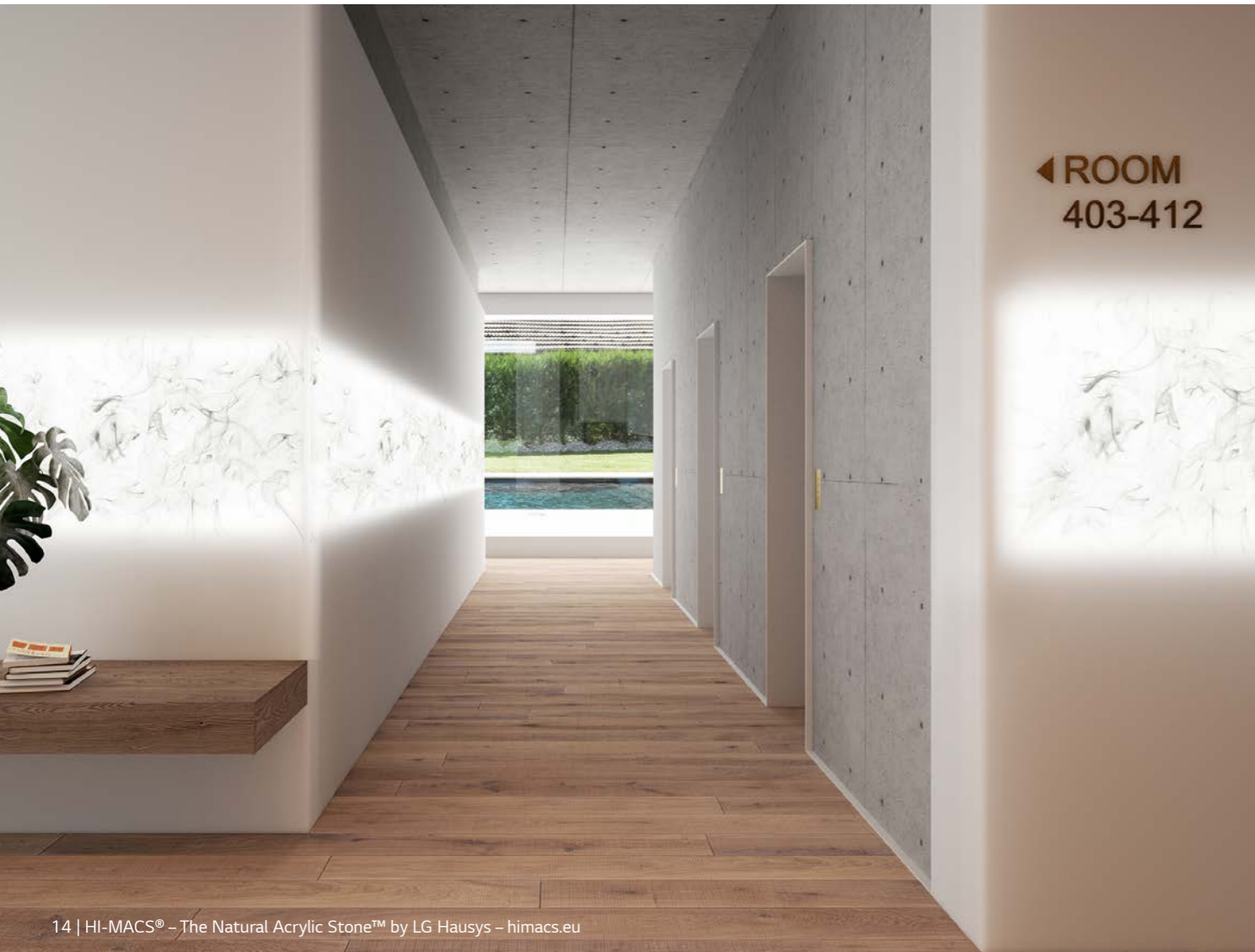
Strato Slate

The Strato Collection enhances the HI-MACS® colour range with brand new design possibilities: the striations create geometry through its soft structure and subtle look. The skilful use of the new linear pattern, vertically or horizontally, allows for great variation in each and every project.

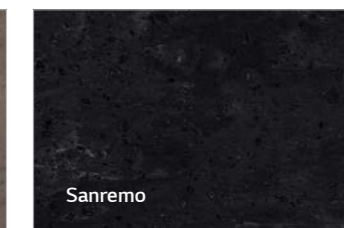
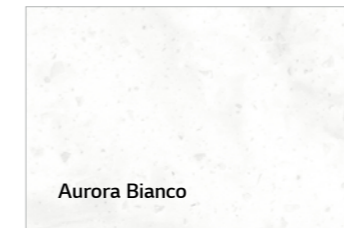
MARMO COLLECTION



The HI-MACS® Marmo Collection provides colours to address the current trends for top-quality marble aesthetics, ranging from semi-translucent white, through shades of grey, to striking dark brown and anthracite tones.



The new Aurora Colours are inspired by the natural beauty of the Northern Lights. In brilliant waves over the sky the vibrant flow of Aurora Borealis is captured in these tones. With the semi-translucency of the colours Pavia and Aurora Cotton, you can play with light effects giving dramatic results to integrate this natural phenomenon to your interior design. The new Aurora Colours – an evolution of the Marmo Collection – combine aesthetics inspired by nature with all the benefits of the latest generation solid surface HI-MACS®.



CONCRETE COLLECTION



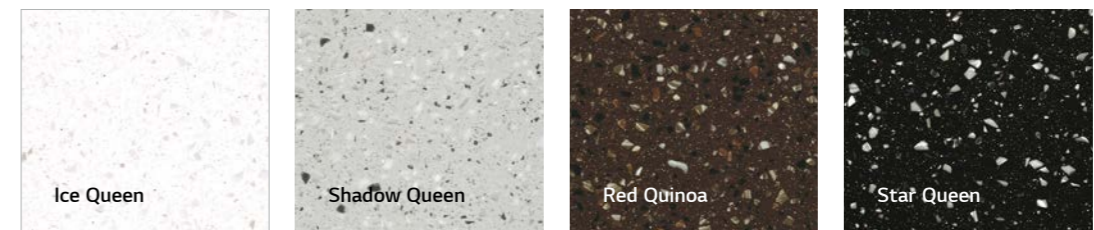
The industrial look of concrete combined with the incredible flexibility of HI-MACS®. The Concrete Collection adds huge opportunities for great designs to architects and designers.



LUCIA COLLECTION



This collection focuses on the natural trend colours black, white and grey. The lively and homogeneous structures add character and expression to the colours. Not surprising, as the renowned Dutch designer, Marcel Wanders, designed three of these colours.



VOLCANICS COLLECTION

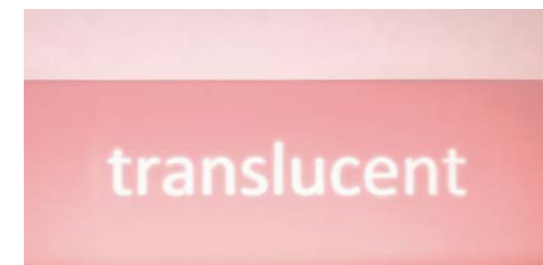
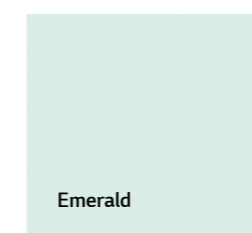
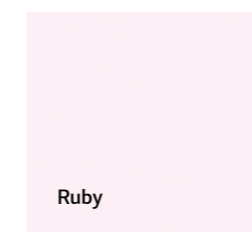
The large particles of the Volcanics shades add a sense of style to any design. When used on a large scale the result is a dramatic showpiece.

Three colours from the Volcanics range contain recycled content for an environmentally friendly solution with a luxurious natural stone look.



LUCENT COLLECTION

Translucency and effective use of light are decisive design elements of contemporary architecture – the shades of the Lucent Collection, with their exceptional light translucency, allow for spectacular designs. Whether effectively backlit or simply illuminated, the Lucent colours of the architecture always add an elegant touch thanks to their characteristic reaction to light.



Oblique Men – Design: The Invisible Party – Fabrication: Van Assem Interieurbouw – HI-MACS® Supplier: Baars & Bloemhoff, The Netherlands – Material: HI-MACS® Emerald – Photographed by Sai Marston Photography

Raiffeisen Bank Mendrisio – Design by Studio d'architettura Casali Sagli + Fabrication: Il Falegname Fabrizio Sagli – Material: HI-MACS® Opal – Photographed by Claudio Bader

SOLIDS COLLECTION

Alpine White	Diamond White	Arctic White	Ivory White	Nougat Cream
Satin White	Cream	Almond	Babylon Beige	Toffee Brown
Suede	Grey	Marta Grey	Steel Grey	Concrete Grey
Lemon Squash	Banana	Orange	Fiery Red	Festival Pink
Light Green	Sky Blue	Evergreen	Deep Indigo	Cosmic Blue
Midnight Grey	Mink	Dark Night	Coffee Brown	Black

The classic in terms of solid surfaces – a wide range of attractive shades of white lies at the heart of this collection. Complemented by colourful, dynamic uni-shade accents from Lemon Squash to Festival Pink. The timeless collection offers the perfect colour for every design.

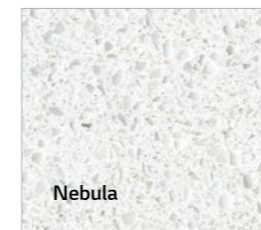


Design: Herrmann Flavio – Fabrication: IL Falegname Fabrizio Sagl – HI-MACS® Supplier: klausler acrylstein ag, Switzerland – Photographed by Claudio Bader

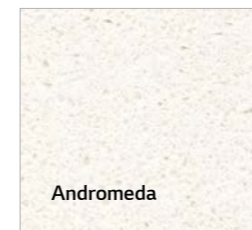
ASTER COLLECTION



Studio Podrini, studiopodrimi.com



Nebula



Andromeda

Aster is a collection of elegant shades of grey, ranging from almost white to a dramatic dark grey, all with a gorgeous mother of pearl shimmer.



New Moon



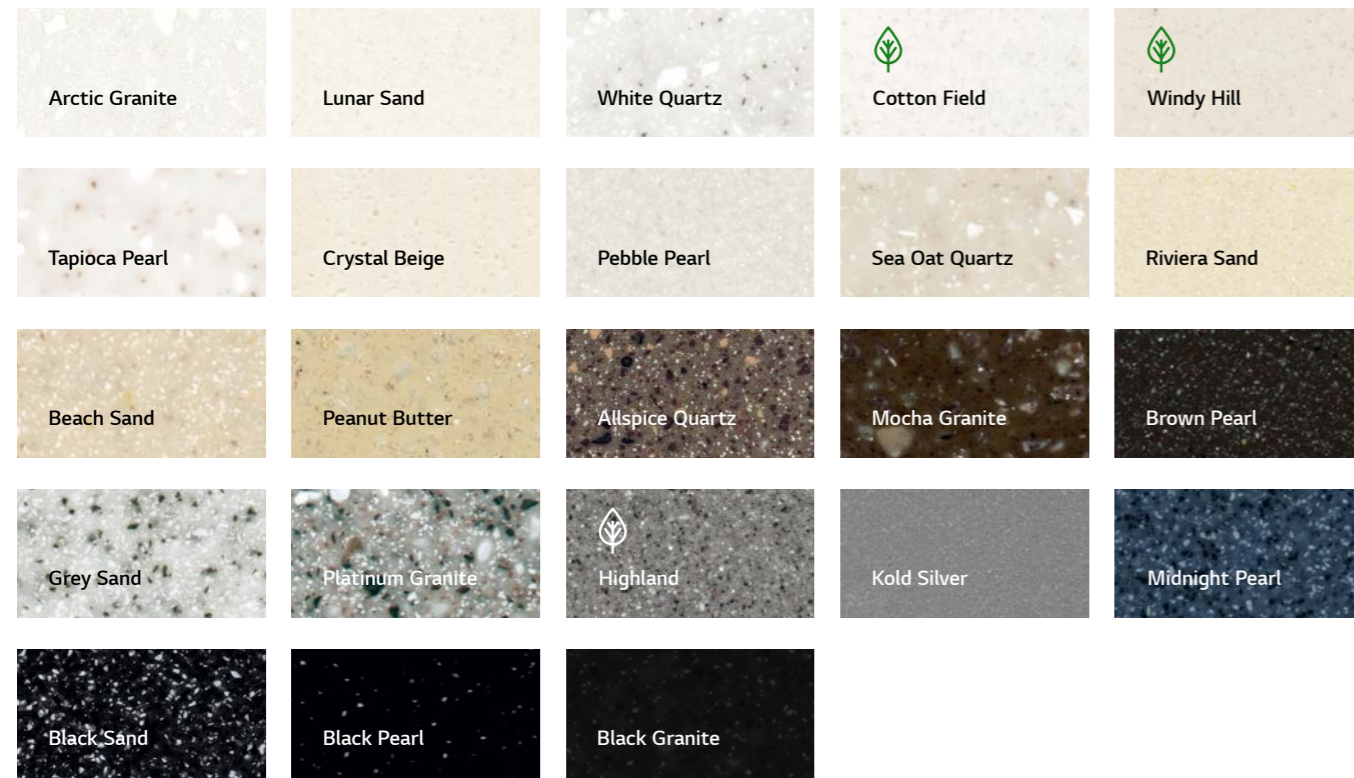
Venus



Hercules

GRANITE, SPARKLE, QUARTZ, SAND & PEARL COLLECTIONS

Ultimate elegance thanks to lively textures, harmoniously natural tones and maximum subtleness. The Sparkle, Sand & Pearl, Granite and Quartz collections are perfect either alone or in combination with other colours.



HI-MACS EXTERIA®



For years, spectacular façades have been made from HI-MACS® all over the world. In doing so, the advantages are often skilfully staged: artistic relief milling with typography, flush mount company logos, backlit patterns and other spectacular light effects and curvy designs. And every good design inspires even more creativity.

With HI-MACS Exteria®, LG Hausys is now expanding exterior possibilities.

- S728 HI-MACS®-FR (Alpine White) is the fire resistant formulation, which for many years, has offered increased fire resistance – certified by the ETA.
- S828 HI-MACS®-UV+ (Alpine White) is the new exterior formulation offering even better UV resistance, which is particularly important when the façade is exposed to high levels of sunlight.
- All other HI-MACS® colours labelled with a sun symbol can also be used outdoors. You can find these on pages 66 to 68.

HI-MACS Exteria® Certificates



HI-MACS® by LG Hausys has obtained the French QB certification and CSTB ATec "Avis Technique" for facade applications in S828 Alpine White. (Avis Technique 2.2/18-1795_V1).



Fixed with KEIL inserts and a BWM structure, HI-MACS® façade in S728 – Alpine White successfully passed the ETA tests (European Technical Agreement).



Permanent innovation is in our DNA

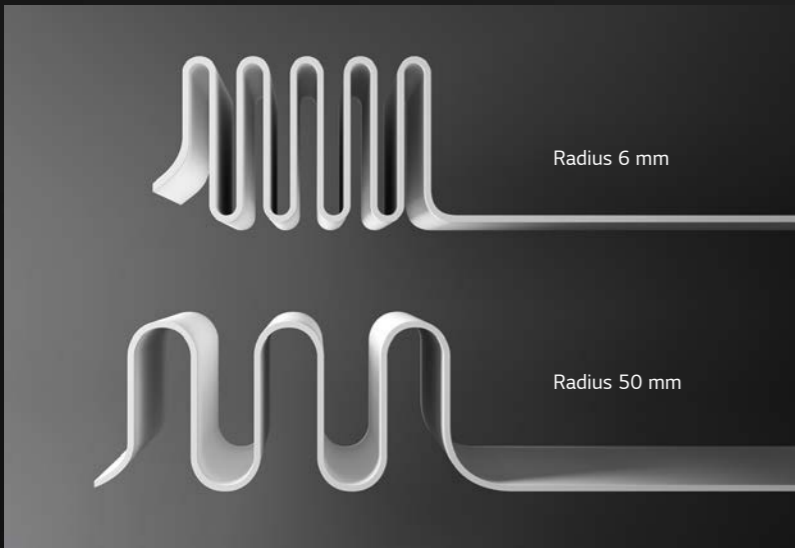


**HI-MACS® Ultra-Thermoforming:
Extreme curves**

The HI-MACS® Ultra-Thermoforming formula allows for even more extreme curves. The minimum inner radius of 6 mm (usually 50 mm) offers a completely new design dimension. This product has 30% greater flexibility, which allows designers to create much sharper curves. Even the smallest radii can be created without affecting the material properties.

Especially in furniture design, where it is often about filigree details, but also in the kitchen and bathroom, the new feature offers clear advantages: the radii of deep-drawn basins can be made significantly smaller, which improves the appearance and size of the basin.

The new ultra-thermoforming quality in popular Alpine White is available in a thickness of 12 mm and can be used indoors and outdoors. The same warranty conditions apply as for all other HI-MACS® sheets.



HI-MACS® high-performance adhesive: lives up to its promise

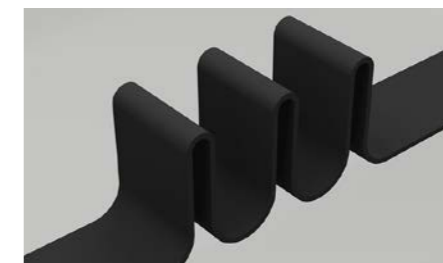
The main task of adhesives is to combine two parts permanently – our adhesive with improved formulation does this perfectly, thanks to its much stronger bond. In addition, its viscosity has been significantly improved; this means it can be used more precisely, eliminating any annoying “bleeding”. The adhesive’s UV resistance is also improved.



HI-MACS® Intense Ultra.
Work with Power.



Intense Ultra Grey



Intense Ultra Dark Grey



Intense Ultra Black

HI-MACS® Intense Ultra is based on a brand-new material formulation and combines Intense Colour technology with Ultra-thermoforming. Dark colours become more “intense”, darker and also more resistant, with less visible scratches. The new HI-MACS® Intense Ultra, also has excellent thermoforming capabilities. This new formula allows the material to reach a very small internal radius, 6 mm, with almost no whitening effect even when using dark colours.



HI-MACS® Intense Ultra was awarded the prestigious Archiproduct Design Award.

Perfect for kitchen, laboratory and bathroom.

The comprehensive range of sinks, basins, baths and shower trays available in HI-MACS®, means creative planners have all the options to design functional and tasteful kitchens and bathrooms, sanitary facilities, hospitals and much more. With the exception of some countertop bathroom bowls, all these products are designed to be flush- or under-mounted, in combination with HI-MACS® sheet materials.



The coordinated sinks can be installed flush- or under-mounted. The result is extremely hygienic, easy to maintain units from a single cast. Perfect for the kitchen and laboratory.

HI-MACS® SINKS, BASINS, BATHS & SHOWER TRAYS



All images on this page: Studio Podirini, studiopodirini.com



The new shower trays and baths from HI-MACS® offer a pleasant, warm touch and silky matt elegance. Three shower trays and three baths extend the product offering for classy and elegant bathrooms.



In addition, the HI-MACS® top-mounted range offers three exclusive countertop basins that perfectly capture the trend of linear bathroom designs.

HI-MACS® Projects

Great spaces and installations from all over Europe.

Public Buildings and Offices

The requirements for public spaces are very demanding. It's therefore good to know that HI-MACS® regularly undergoes all of the relevant product tests and holds all the required certificates to prove its superior quality.



Allwood Boardroom

Location: Laois, Ireland

Design: Allwood Architectural Joinery, Ireland, allwood.ie

Fabrication: Allwood Architectural Joinery, Ireland, allwood.ie

HI-MACS® Supplier: James Latham

Material: HI-MACS® Alpine White Ultra-Thermoforming,
Marta Grey

When architecture and art become one

The use of HI-MACS® in this project expertly illustrates the broad versatility of the material: the striking wall shelf, which is both a useful object and a work of art, and the backlit inlay in the doors of the kitchen cupboard exhibit an impressive design quality. The distinctive conference table with its oversized rounded edges, the borders of the furniture and media, and the sleek kitchen counter are all skilfully made from HI-MACS®.



All images on this page. Photographed by Julie Brichet / juliebrichet.com



Pangéo Conseil

Location: Agen, France

Design: Lopez Myriam Architecture Intérieure, France

Fabrication: R2D2

HI-MACS® Supplier: PlanAcryl

Material: HI-MACS® Alpine White

Three-dimensional wall or spectacular shelf?

HI-MACS®, shown here in Alpine White, blends in seamlessly with this ensemble of classically beautiful quality materials. The intelligent use of lighting makes the material seem both solid and lightweight at once.



The Garage Stadionplein Amsterdam

Location: Amsterdam, The Netherlands

Design: Rijnboutt Architecten, rijnboutt.nl

Fabrication: VAN DER PLAS Meubel & Project BV, vanderplas.biz

HI-MACS® Supplier: Baars & Bloemhoff

Material: HI-MACS® Alpine White

Once a showroom, now a meeting space

The name 'The Garage' alludes to the fact that it was once a car showroom – but now this space is home to intelligent seating that invites users to relax and meet. The structural elements were made of HI-MACS®. Curvaceous and practical, solid and almost floating thanks to the under-lighting, the seating islands give the room structure and function.



All images on this page. Photographed by Kees Hummel Fotografie

Entry desk Floriworld Experience Centre

Location: Aalsmeer, The Netherlands

Design: ANN DAS Architettura d'Interni, anai.nl

Fabrication: Issos Interieurbouw, issos.nl

HI-MACS® Supplier: Baars & Bloemhoff

Material: HI-MACS® Alpine White

Everything in the building, where this reception desk welcomes guests, centres around the beauty of flowers. The white countertop plays a sleek counterpart to the colourful design of the wall behind it. The gentle curve and the radii flowing seamlessly into each other, by comparison, engage in an organic interplay of shapes.



Photographed by Issos Interieurbouw

Conversion Works

Location: Halle, Belgium

Design: Conversion Works, conversionworks.eu, Belgium

Fabrication: Dadec Interieur, dadecinterieur.be

HI-MACS® Supplier: Cras

Material: HI-MACS® Alpine White

The aim of this installation was to convert an old water tower into offices, with large-format, highly functional work surfaces. Conversion Works, whose slogan is "shaping extraordinary spaces" adapted the challenging geometry of the room without over-powering it. Mission accomplished!



Photographed by Pieter Clicteur, The Art of Living magazine

Shops and Exhibitions

It is an accepted fact in retail, that no compromises can be made in terms of quality. And HI-MACS® does just what the high-tech brand LG Hausys promises. With its limitless possibilities, the material meets the demanding requirements to perfection.



All images on this page: Photographed by Francisco Nogueira

Banema Lab and Studio

Location: Lisbon, Portugal

Design: Architect Pedro Campos Costa, camposcosta.com

Fabrication: Horta & Veríssimo

HI-MACS® Supplier: Banema S.A.

Material: HI-MACS® Evergreen

Large, round openings meet linear furniture with striking grid patterns – all in a vivid petrol colour. This design in a concept store in Lisbon was made possible using HI-MACS® in the colour Evergreen thanks to the Thermoforming properties of the material.



Hairdresser "Nino der Friseur"

Location: Berlin, Germany

Design & Fabrication: Frank Kaiser Objekteinrichtungen,
kaiser-objekt.de

HI-MACS® Supplier: Klöpfer Surfaces

Material: HI-MACS® Alpine White



Showroom Panelwork

Location: Manacor, Mallorca, Spain

Design: Alejandra Company,
alejandracompany.es

HI-MACS® Supplier: Panelwork

Photographed by Retratts Xisca Bauza

This showroom on the Balearic island of Mallorca presents visitors with creative design solutions for hotels. It focuses on sustainability and light: the 'Living Wall' features real plants that are automatically watered each day – a concept that is completely possible with HI-MACS®. The room's square columns and the washbasin counter in the colour Emerald are made from the translucent Lucent Collection, as is the backlit reception desk in the colour Opal.

An excellent quality of HI-MACS® is that finished pieces often look simple and straightforward. Like in this hair salon in Berlin: the cube-like elements in the room are seamless, making them very easy to maintain. The white surfaces look even more spacious and clean through the use of discreet concealed lighting.



Photographed by Ideograma, estudio de diseño.



HI-MACS® superior quality makes it ideal for using in cladding projects, facades and wall linings.



The sliding sunscreens are easy to move back and forth.

All images on this page: Photographed by Denis Bibbal / artgrafikfr

HI-MACS® and light always work together perfectly

The skilful interplay of light and shadow in this villa in the French Atlantic Coast is an important component of the design. Crucial to realising this aspect of the design was finding a material that could be crafted with precision and would also offer stability and be weatherproof for outdoor use. Et voilà.



Façade "Soluna"

Location: Royan, France
 Design: Atelier Kazéhana & Tuillière, France, kazehana-tuilliere.com
 Fabricator: Atelier Kazéhana & Tuillière, France, kazehana-tuilliere.com
 HI-MACS® Supplier: PlanAcryl
 Material: HI-MACS® Alpine White



You are looking at a school canteen in Portugal – and an architectural masterpiece.

School Bairro do Mouco

Location: Montijo, Portugal
 Design: Falanstério Atelier de Arquitectura, Portugal, falansterio.pt
 Fabricator: Horta & Verissimo
 HI-MACS® Supplier: Banema S.A.
 Material: HI-MACS® Alpine White



All images on this page: Photographed by Tiago Casanova



The isosceles triangle as a basis for creative façade design

The façade decor looks like a primary school geometry lesson: it is simple and yet interesting. Some of the triangles are sawed out, while others are created from discreet inlays, milled with a slight offset. The wonderful geometric shell of this canteen is both logical and playful at the same time. What could be better for a school?

Hospitality and Gastronomy

HI-MACS® creates visual, statement features in the trendiest of bars, the most upmarket of restaurants and the most happening clubs. Especially for internationally operating hospitality chains it is good to know that LG Hausys offers a global after sales service with their network-partners.



4/6 Four Six – Coffee & Drinks

Location: Belgrade, Serbia

Design: Vladimir Paripović

Fabrication: Bane Doo, banesur.rs

Material: HI-MACS® Alpine White



At the heart of this stylish café-bar in Belgrade, Serbia, is the bar itself, which runs through the entire establishment. The pleasant feel of the material for patrons and the easy care and cleaning properties for staff make HI-MACS® the clear choice.

Tressen Hotel “Mariandl am Meer”

Location: Binz, Germany

Fabrication: Tischlerei Rätz GmbH, tischlerei-raetz.de

HI-MACS® Supplier: Klöpfer Surfaces

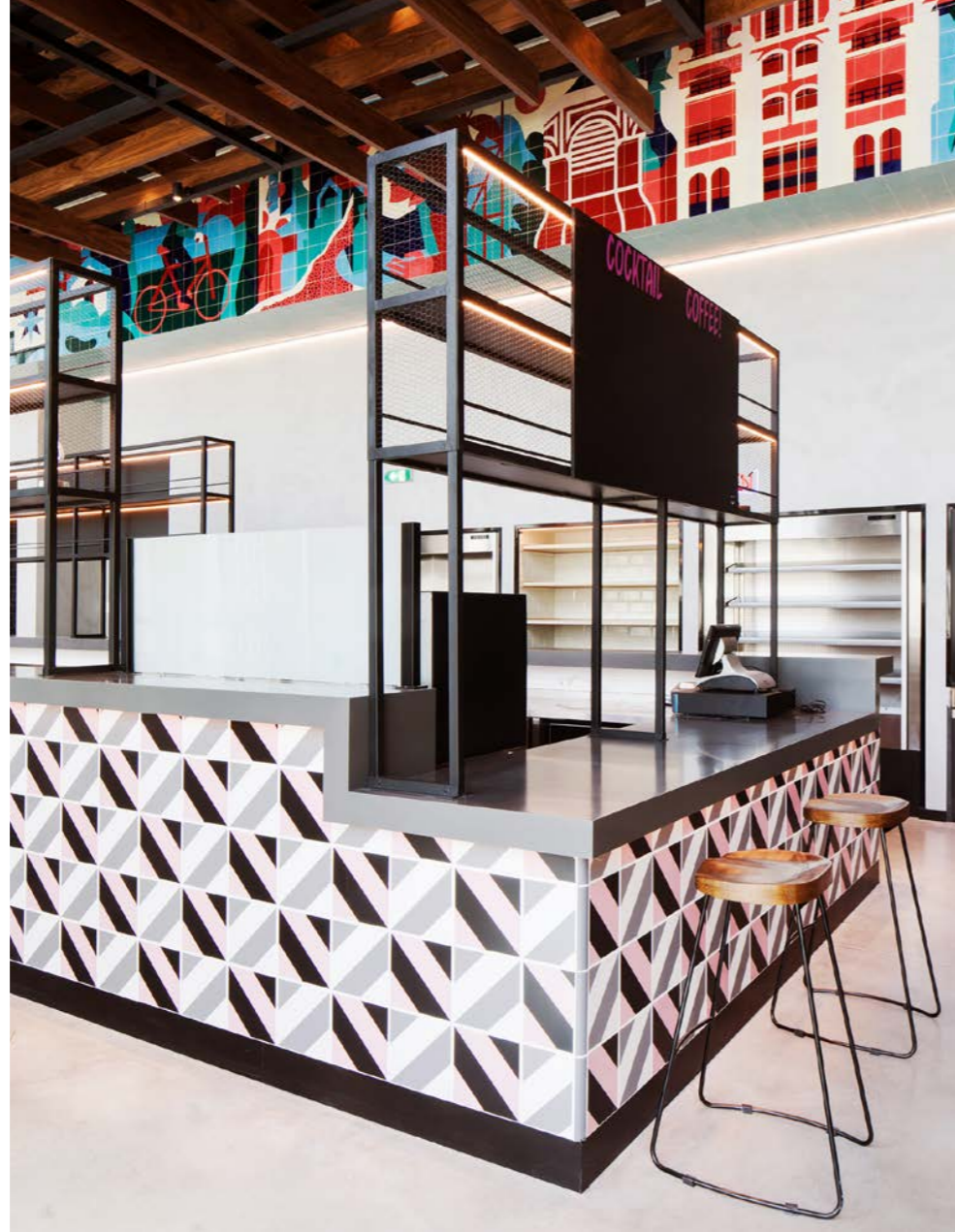
Material: HI-MACS® Alpine White



What material would you choose to work with if you wanted to give onlookers the impression of a carefully folded paper aeroplane? HI-MACS® is the perfect fit here. The stylish hotel on the German island of Rügen in the Baltic Sea combines warm pine – a nod to its parent company in Bavaria – with the crisp white of HI-MACS®. The material allows the counter to tell part of the story of the hotel's brand while also impressing its owners with its core qualities of being 'extremely robust' and 'very easy to maintain'.



The reception area of the Hotel Moxy has spaces for sitting and standing. The solid counter-tops are positioned at different heights to allow for both options.



Hotel Moxy Lisboa Oriente

Location: Lisbon, Portugal
 Design: Broadway Malyan, broadwaymalyan.com
 Fabrication: Horta & Verissimo
 HI-MACS® Supplier: Banema S.A.
 Material: HI-MACS® Marta Grey, Alpine White

The reception area of this hotel in Lisbon features a colourful, graphic design. The sleek countertop in HI-MACS® solid colour Marta Grey offers a calm oasis amidst the explosion of shapes and colours. The hotel rooms, by contrast, are elegant and subdued: the sleek bathroom counter with its seamless rectangular basin and milled hand towel holder exude professional grandeur.



All images on this page: Photographed by Tiago Casanova

The countertop, in fine HI-MACS® Arctic Granite, blends in perfectly with the aquamarine colour scheme and the red-toned walnut wood.



State Coffee Co. Espresso Bar

Location: Agria, Greece
 Design: Lab4 architects, lab4architects.com
 Material: HI-MACS® Arctic Granite



All images on this page: Photographed by Kostas Kroustalis



The espresso bar of the State Coffee Co. chain in Greece pays homage to the cafés of 1930s New York City. The bar combines vintage design with state-of-the-art technology and materials. HI-MACS® is used for the work surfaces, column cladding and display case. It was chosen for its excellent quality and high resistance to stains, dirt, chemicals and scratches, as well as its ability to withstand heavy use.

Healthcare

Cleanliness and sterility are paramount in hospitals and laboratories and any materials used should meet the strictest quality-standards. Its internationally certified resistance to dirt, viruses, bacteria and numerous chemicals makes HI-MACS® the first material of choice in the healthcare sector.

Aesthetic Clinic

Location: Royan, France

Design & Fabrication: Kazéhana & Tuillière Atelier, kazehana-tuilliere.com

HI-MACS® Supplier: Planacryl

Material: HI-MACS® Alpine White

It makes sense that a clinic offering 'aesthetic treatments' would place especially high value on aesthetic quality. The milled patterns in the partitions made of HI-MACS® have a discreet design that creates a surprising look, lending the clinic a private, almost intimate impression.



The sophistication of this reception desk lies in the detail: a line milled into the HI-MACS® from the back to the front of the desk forms a discreet strip of light. The light reflecting from the base of the desk makes it seem as if the solid installation is almost floating.

Dr Leahu Dental Clinic

Location: Oradea, Romania

Design: Studio3plus, studio3plus.ro

Fabrication: Furniture Vision, furniturevision.ro

Material: HI-MACS® Diamond White



The finely crafted pattern was achieved with a high-precision CNC milling machine and hardwood tools.



YES VISAGE Aesthetic Clinic

Location: Prague, Czech Republic

Design: PIZINGERS MORIX, morix.cz

Fabrication: A.M.O.S. DESIGN s.r.o., amosdesign.eu

Material: HI-MACS® Alpine White



A blend of tradition with the contemporary

This dental practice is situated in the rooms of an historic monastery.

The character-laden materials and structures of the old rooms, such as the natural stone wall at the back, are enhanced by the modern counter made of high-quality HI-MACS®.

Tamara Adams Dental Practice

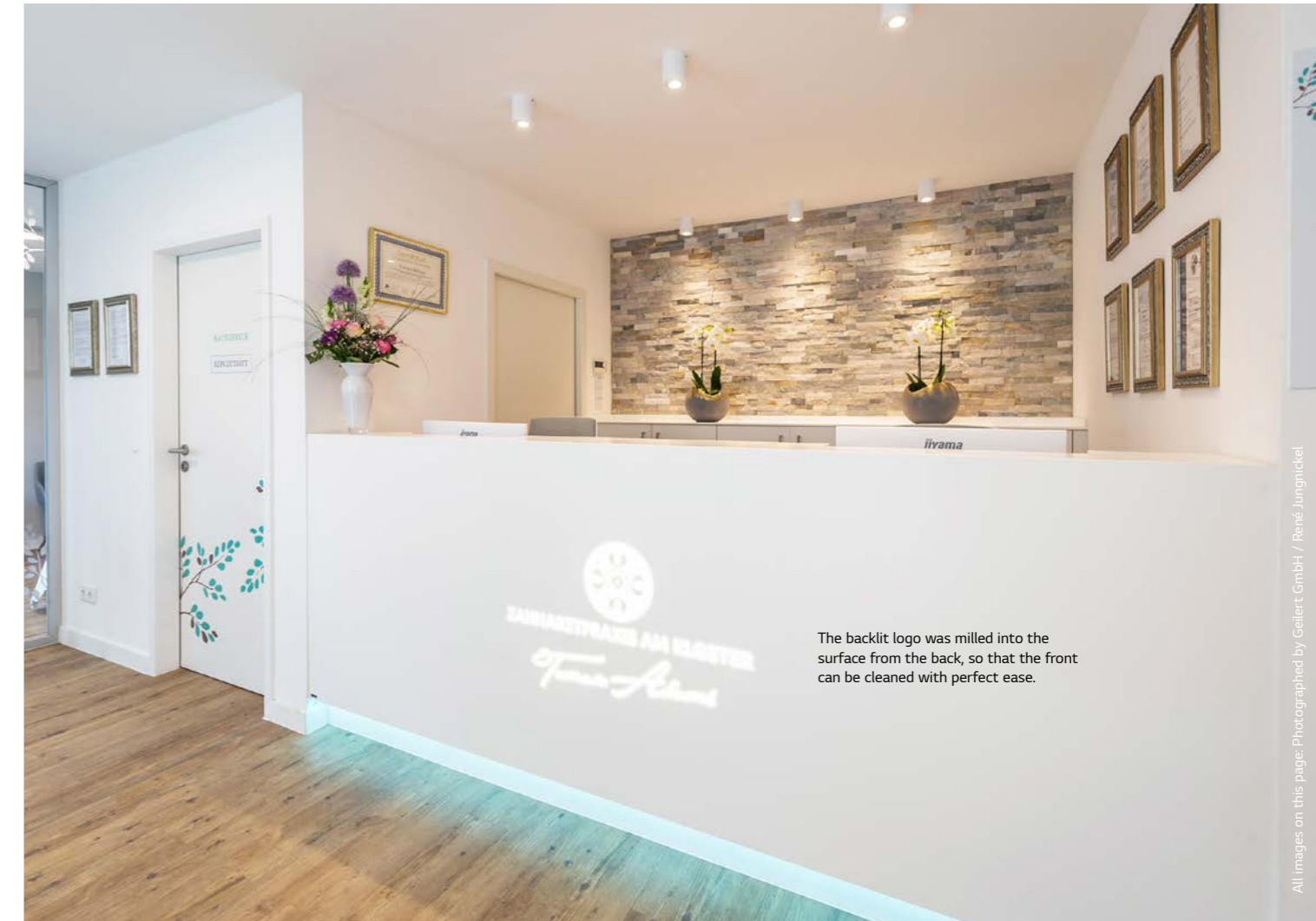
Location: Kloster Lehnin, Germany

Design: Geilert GmbH, Germany, geilert-gmbh.de

Fabrication: Geilert GmbH, Germany, geilert-gmbh.de

HI-MACS® Supplier: Klöpfer Surfaces

Material: HI-MACS® Arctic White



The backlit logo was milled into the surface from the back, so that the front can be cleaned with perfect ease.

Curving like for like

The reception desk adopts the same curve of the long sofa in an almost symmetrical reflection. The ability to be completely free when it comes to shaping HI-MACS® allows for highly individual designs like this.



In contrast to the organic curves in the reception area, the angular desk in the treatment area features corners and edges. HI-MACS® can achieve both of these effects and as a consistently used material throughout, is the design element that binds the two styles together.



The extreme toughness and ease of maintenance from HI-MACS® are prerequisites to withstand everyday life in nursery schools, schools, universities and other institutions.



King Abdulaziz Center for World Culture

Location: Dhahran, Saudi Arabia
Design: Snøhetta Architects, snohetta.com
Fabrication: ROSSKOPF + PARTNER AG
HI-MACS® Supplier: Klöpfer Surfaces
Material: HI-MACS® Alpine White

The permanent exhibit of 'Arabian Journeys' takes visitors on a multimedia journey through the past, present and future of Saudi Arabia. The 'panorama panels' made of HI-MACS® become vertical and horizontal functional surfaces and walls and guide visitors through the spectacular exhibition rooms.



All images on this page: Photographed by Daniel Rauch / Roskopf + Partner AG

Københavns Museum, Copenhagen Sky Line

Location: Copenhagen, Denmark
Design: JAC Studios / Johan Carlsson, jacstudios.dk
Fabrication: YOHO, Roy Hobbs, yoho.dk
HI-MACS® Supplier: Gop Denmark A/S
Material: HI-MACS® Opal



Like a never-ending sunset
 The back wall of the Museum of Copenhagen offers an impressive backdrop to a miniature model of the city. The panoramic view is milled into the material at several levels and backlit at different intensities.



All images on this page: Photographed by Nicholas Løye



Living Spaces

Any materials used within your home should be selected with utmost care as you will be using them for many years. The exclusive 15-year warranty with a Quality Club fabricator ensures that your satisfaction is guaranteed.



Bermondsey Wall Penthouse

Location: London, UK

Design: FORMstudio, formstudio.co.uk

HI-MACS® Supplier: James Latham

Material: HI-MACS® Alpine White



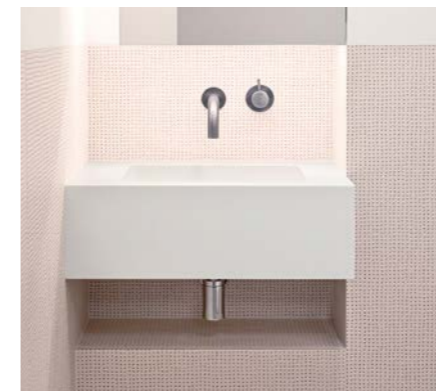
Private residence Amsterdam

Location: Amsterdam, The Netherlands

Design & Fabrication: Houtwerk BV, houtwerk.nl

HI-MACS® Supplier: Baars & Bloemhoff

Material: HI-MACS® Alpine White



When the kitchen feels like part of the living room

HI-MACS® makes it possible to give a space a sense of cosiness and style. The large counters of the kitchen give the impression of high-end living-room furniture.



The devil is in the detail: a slight groove lends airiness to the space between the shelf and the work surface.



All images on this page: Photographed by Juraj Hatina



The furniture is full of sophisticated little details, like these ergonomically shaped recessed grips made of HI-MACS®.

Family home reconstruction

Location: Bratislava, Slovakia
Design: Rado Rick designers, Slovakia, radorick.com
Fabrication: Wood & Interiors
HI-MACS® Supplier: Polytrade CE
Material: HI-MACS® Steel Concrete, Ultra-Thermoforming, Alpine White, Black, Hercules, Opal

In this elegant private home, care has been taken at every step to ensure maximum quality: the entire staircase, countless wall claddings, the bathroom and many carefully crafted details throughout the house are made of HI-MACS®. The blend of high quality, functionality and design greatly impressed the owners.



The angular furniture in the bathroom was constructed based on individual plans drawn up by the interior designer.



Furniture and Lighting

Whether it is used for hexagonal tables with internal lighting, honeycomb-shaped shelving, engraved counters or thermoformed seating, HI-MACS® provides limitless design options and maximum material quality.



Photographed by Pierre Cabrera

Tulip

Location: Toulouse, France
Design: Pierre Cabrera, France, pierre-cabrera.fr
Fabrication: Pierre Cabrera, France, pierre-cabrera.fr
HI-MACS® Supplier: Planacryl
Material: HI-MACS® Alpine White

With Tulip, Pierre Cabrera has created an extraordinarily intimate and inviting light. His idea was to create perfect harmony between material and light. The three-dimensional formability and translucence of HI-MACS® make this material extremely suited to his design.



ingood study

Location: Kiel, Germany
Design: Simon Hölscher
HI-MACS® Supplier: Klöpfer Surfaces
Material: HI-MACS® Alpine White

The top and front elements of this desk are made of 6 mm-thick HI-MACS®. This sleek piece is packed with sophisticated design features: a flap reveals electrical and multimedia connections, while the front panels transition into drawers with milled recessed grips.



Photographed by Lennard Kaufmann

Kitchen

The ingredients, as well as the material on which they are prepared, have a key role in creating a high-quality meal. HI-MACS® is a non-porous, dirt-repellent and hygienic surface, and combined with its Thermalcure-technology, results in the best surface-quality for working with food and everyday household chemicals.



Photographed by Ruben van Megen

Custom made kitchen

Location: Venlo, The Netherlands
Design & Fabrication: Atelier Ruben van Megen, rubenvanmegen.com
HI-MACS® Supplier: Baars & Bloemhoff
Material: HI-MACS® Alpine White, Evergreen

Sleek and exceedingly elegant: this kitchen offers two parallel work units, with work surfaces, drawers, grips and basins all made from HI-MACS®. The front island unit is in Alpine White, while the wall unit is in Evergreen.



The HI-MACS® surface here was polished for high shine – a piece of cake thanks to Thermalcure technology. The combination with the matt basins integrated flush in the countertop creates an exciting contrast of matt and gloss. The vertical oak panels add to the contrast of colour and material.

Oak Wall Kitchen

Location: Lisse, The Netherlands
Design: Roel van der Meer
Fabrication: Design & Meer, design-en-meer.nl
HI-MACS® Supplier: Baars & Bloemhoff
Material: HI-MACS® Alpine White



Photographed by Ronald Smits



Cucina Minimal

Location: Sciacca, Italy
Design: Cottone+Indelicato Architetti, cottoneindelicato.com
Fabrication: Build Design, Chiusa Sclafani, builddesign.it
HI-MACS® Supplier: Primek
Material: HI-MACS® Alpine White



All images on this page: Photographed by Gregorio Indelicato

Bathroom

Thanks to its waterproof surface and the extensive range of high-quality washbasins, HI-MACS® is becoming increasingly popular in the bathroom. The warm, pleasing feel of the material, coupled with its ease of care means HI-MACS® is simply perfect.

Baths by Clay

Location: The Netherlands

Design & Fabrication: Baths by Clay, The Netherlands, bathsbyclay.com

HI-MACS® Supplier: Baars & Bloemhoff

Material: HI-MACS® Alpine White

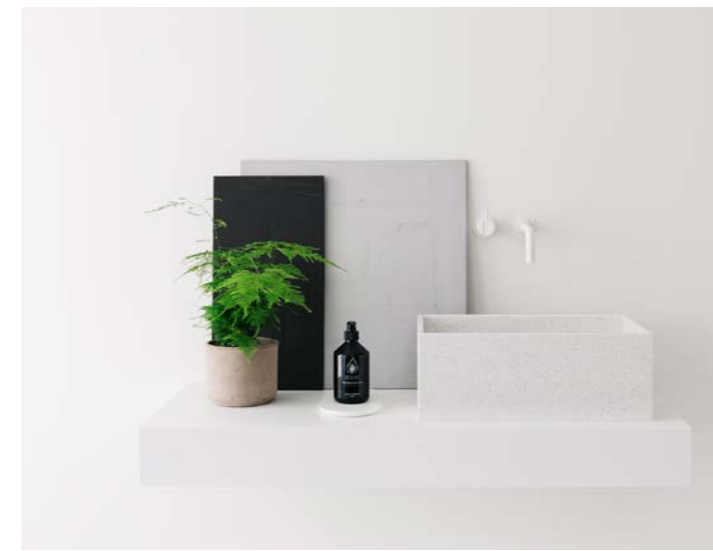
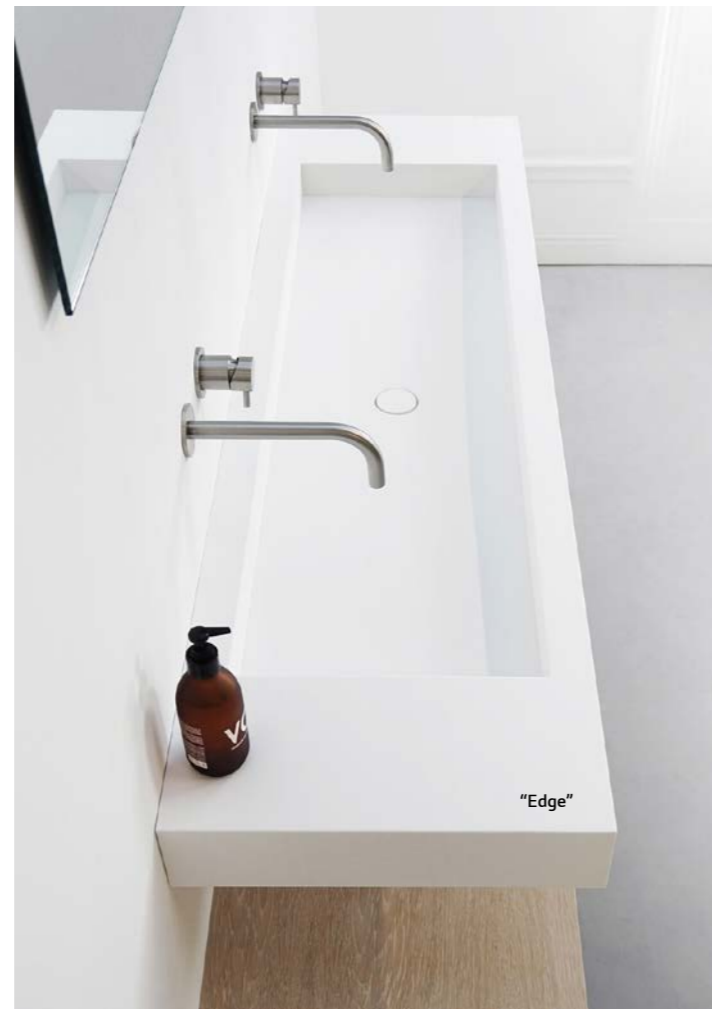
Three washbasins with pizzazz

'Curve' is a spacious basin with gently rounded edges for a tranquil experience.

'Level' offers huge basins and an intelligent drain system, designed in such a way that there is still space directly under the basins for two shelf levels.

'Edge' features an extra-wide basin with precise sides, designed for two people to use at once.

The washbasins, counter tops and furniture are all made from HI-MACS®.



The washbasin and accessories are 'not only white'

Dutch design label Not Only White does not overpromise: in addition to their favourite colour Alpine White, the washbasins also deliver sophistication, clever details and an almost sculpted look. The new "Fall Collection", which offers top-mounted basins, is characterised by its very spacious basins combined with the label's usual understated colours. The basic concept of the collection centres around playing with height, with edge heights of 180 mm, 270 mm and 360 mm available.

Not Only White

Design: Joost van der Vecht for Not Only White, The Netherlands

Fabrication: Not Only White, The Netherlands, notonlywhite.com

Material: HI-MACS® Alpine White, White Quartz, Sea Oat Quartz, Peanut Butter



Wilhelminapark

Location: Haarlem, The Netherlands

Design: Studio Ruim, The Netherlands, xxruim.com

Fabrication: Proest Interior

HI-MACS® Supplier: Baars & Bloemhoff

Material: HI-MACS® Alpine White

The Cleopatra bath is the highlight of this high-end bathroom: a completely enclosed area with a flush-integrated bath that one elegantly enters via a double step. The matching washbasin with drawers is also completely made from HI-MACS®.



Airport

Desks, counters and shelving at airports are exposed to extremely heavy and constant use. It is here that the properties of HI-MACS® come into their own – easy to clean and extremely robust, thanks to its innovative Thermalcure-technology.



Gagarin Airport

Location: Saratov, Russia
Design: Asadov, Russia, asadov.ru
Fabrication: Exprompt, Russia, exprompt.com
Material: HI-MACS® Alpine White, Opal



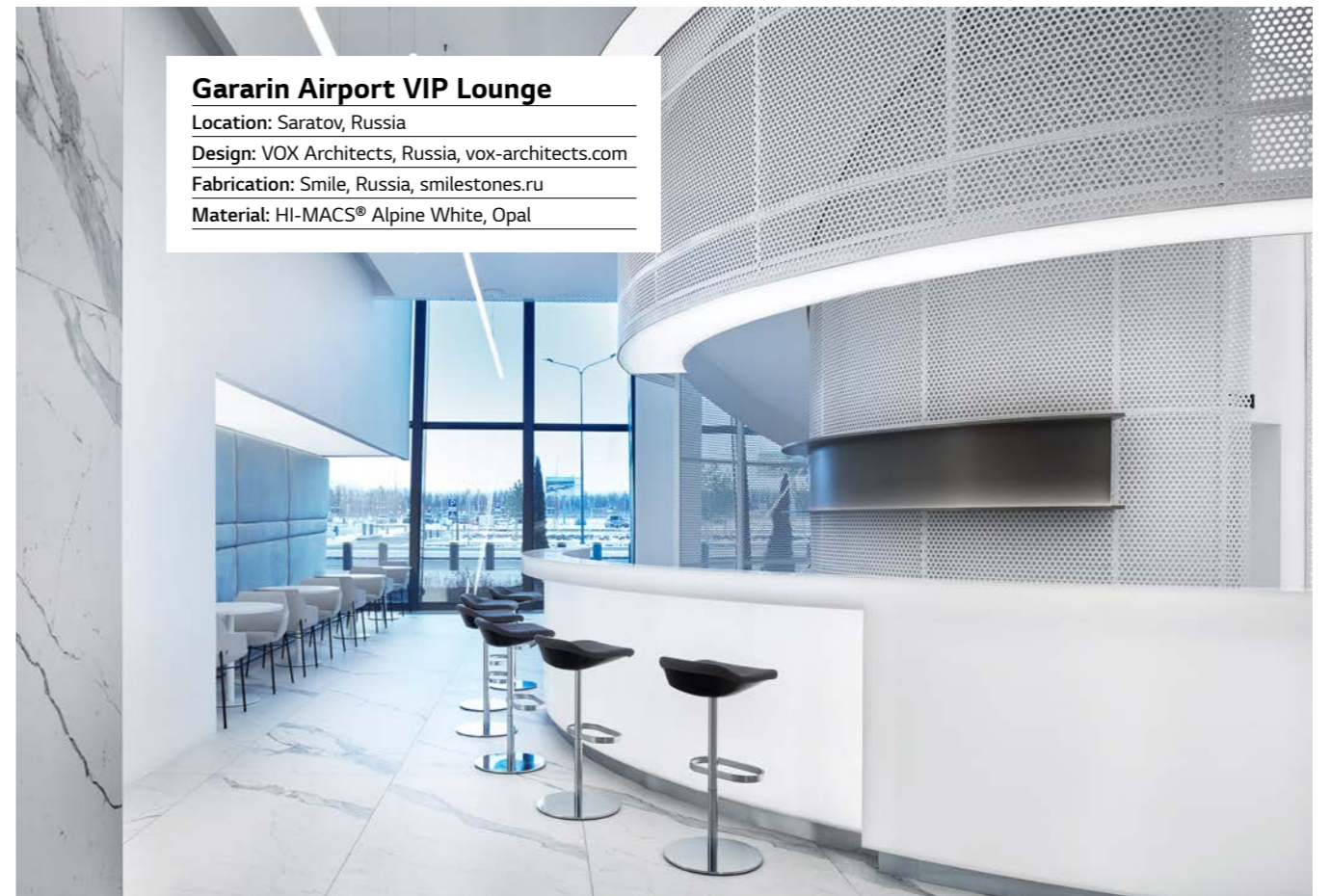
The design of the Gagarin Airport is inspired by its namesake, the cosmonaut Yuri Gagarin: many elements look like space capsules or space helmets, or speak to the expanse of the universe. With its design properties, HI-MACS® laid the groundwork for this creative world, thanks to highly precise processing, versatile formability and the ability to create large, seamless surfaces.



All images on this page: Photographed by © Exprompt

Gagarin Airport VIP Lounge

Location: Saratov, Russia
Design: VOX Architects, Russia, vox-architects.com
Fabrication: Smile, Russia, smilestones.ru
Material: HI-MACS® Alpine White, Opal



All images on this page: Photographed by © Sergey Ananiev



The VIP area of the Gagarin Airport pays homage to the cosmonaut in the most dramatic way. The collaborative partner for the design of this zone is Italian lighting company Artemide. It is clear that the versatile interplay with light was another important reason for choosing HI-MACS®. The creation of soft, mystical light curves, backlighting and translucence – all effects are put to use here and contribute to an impressive overall aesthetic.

Outdoor

Materials used outside are exposed to the weather all year round. This means exposure to sun and rain, snow and ice, lots of moisture and different temperatures as well as strong UV rays. HI-MACS® has passed all the required tests in a selection of colours, and has proved its outstanding qualities can master the toughest outside conditions.



Sliding Outdoor Panels

Location: Saint-Palais-sur-Mer, France

Design: KAZÉHANA & TUILLIÈRE, kazehana-tuilliere.com

Fabrication: KAZÉHANA & TUILLIÈRE, kazehana-tuilliere.com

HI-MACS® Supplier: PlanAcryl

Material: HI-MACS® Alpine White

The large-format sliding sunscreens provide shade while also adding to the striking character of the façade of this villa in the French Atlantic Coast. Coming in through the milled graphic pattern of the screen, the sunlight seems to 'paint' shadow images across the space.

CURVE Outdoor

Design: Nina Moeller, UK, ninamoellerdesigns.com

Fabrication: Qubicle Ltd, UK, qubicle.co.uk

HI-MACS® Supplier: James Latham

Material: HI-MACS® Alpine White

The Curve Outdoor bench from German product designer Nina Moeller has the makings of a classic: completely constructed from HI-MACS®, the sculpted seats are both comfortable and weather-proof. They can be used individually or connected.



Photographed by Marcus Peet marcuspeet.com

Marine Industry

A new composition of HI-MACS® from the Hightech laboratories of LG has been developed for use in ship-building. HI-MACS® FR, has been awarded the IMO certificate module B and D in compliance with the Marine Equipment Directive for its fire resistant and fire-retardant properties.



Photographed by Joris van deuneghem www.photografijkfr

Futura

Location: Antwerp, Belgium

Design: Elft – Joke holvoet

Fabrication: Elft bvba, elft.be

Material: HI-MACS® Babylon Beige

HI-MACS® is used in the cockpit of this modern cargo ship to hold the displays and instruments: it was chosen because it is durable, easy to maintain and pleasant to the touch – all qualities that are in high demand for a product that is in constant use.



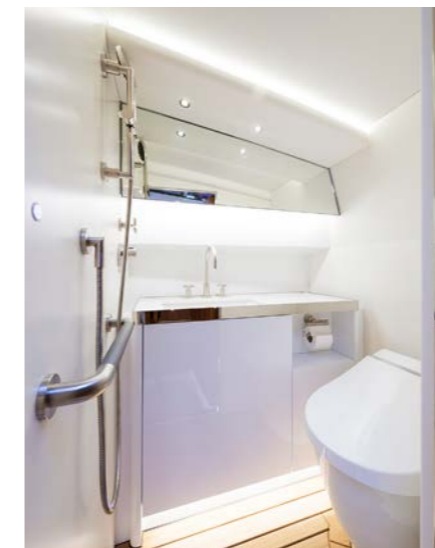
Superyacht Limousine Tender

Location: Bremen-Lesum, Germany

Design: Yachtwerft Meyer GmbH – Inhouse Design Team, Hamid Bekradi, yachtwerft-meyer.com

Material: HI-MACS® Alpine White, Intense Ultra Black, Opal

In a superyacht, design decisions focus on elegant, harmonious details and top quality. You see it here, for example, in the elegantly curved dashboard and flush-mounted wall claddings in the WC, which look as if they were made from the same mould.



Photographed by Thomy Hellmann www.thomashellmann.de

Best of the Last Decade

In recent years HI-MACS® has been specified more and more by architects and designers – only the best quality can convince demanding clientele like these. Thanks to their ability and talent and to the superior quality of material and fabrication some masterpieces have been achieved with HI-MACS®. Although not necessarily recent, they still inspire users and owners. A selection can be found here.



Händel House

Location: Halle, Germany
Design: Gerhards & Glücker, Germany, gerhardsgluecker.com
Fabrication: Möbel Damm, moebel-damm.de
Material: HI-MACS® Arctic White

Baroque forms to honour a baroque musician

This building to honour the great musician Georg Friedrich Händel transitions from an understated exhibition and reception area to an opulent Baroque hall. HI-MACS® links and enables both: the ornamental splendour as well as the subtle play of lights.

Hotel Puerta America

Location: Madrid, Spain
Design: from left to right: Christian Liaigre, France, christian-liaigre.fr – Ron Arad, UK, ronarad.co.uk – Zaha Hadid Architects, UK, zaha-hadid.com
Material: HI-MACS® Alpine White, Black, Fiery Red

19 well-known architects and designers designed this hotel – naturally using HI-MACS®

The result of their work is simply breathtaking, with every room being a veritable stand-alone masterpiece. HI-MACS® was with them every step of the way – inspiring the designers to create their most daring designs.

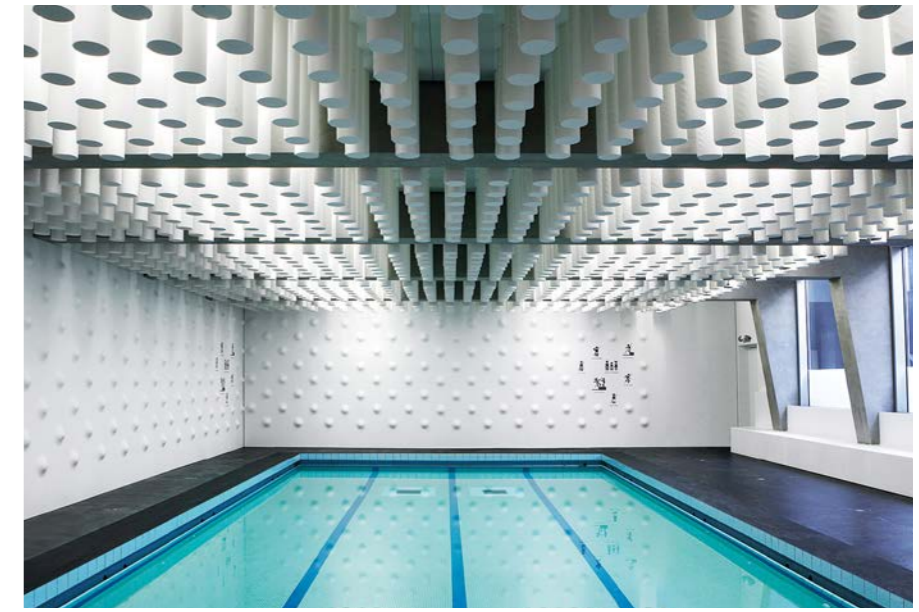


Atlas Swimming Pool

Location: Paris, France
Design: Yoonseux Architectes, France, yoonseux.com
Fabrication: ASKA Interior, France, aska-interior.com
Material: HI-MACS® Arctic White

Water and HI-MACS® do mix

This indoor swimming pool in a Parisian school was designed mainly with HI-MACS®: parts of the exterior walls, the geometrical relief on the interior walls, the non-slip floor in the shower area and many individual items of furniture were all created in HI-MACS® Arctic White. Its perfect hygiene and ultra-flexible form are important properties of the material, which also gives the space a unique atmosphere.



Raiffeisen Bank Zürich

Location: Zurich, Switzerland
Design: NAU Architecture, Switzerland, Drexler Guinand Jauslin Architekten, Switzerland, nau.coop, dj.ch
Fabrication: Wallcovering patterns design: ROK, Rippmann Oesterle Knauss, Switzerland, rok-office.com – Wallcovering and joinery: Glaeser Baden, Switzerland, glaeser.ch
Material: HI-MACS® Alpine White

HI-MACS® helps create a personal vision

The Raiffeisen Bank in Zurich displays the portraits of former prominent residents that stand out thanks to the intricate cutting of triangles of different sizes and the spartan overall interior architectural design.



Sokcho House in White

Location: Inheung-ri, Toseong-myeon, Goseong-gun, Gangwon-do, South Korea
Design: Woo-jin, LIM AEV Architectures, aev-architectures.com
Material: HI-MACS® Alpine White

The house that plays with light

HI-MACS® has a sensuous way of dealing with light: When used as a facade the material provides great aesthetic properties. The light is absorbed or reflected, depending upon the intensity and angle of incidence, and gives the Sokcho Housing in Alpine White a mystical feel.



We have a strong partner network for your most creative ideas.

Architects and designers have awe-inspiring ideas. And exceptional craftsmen transform them into reality using HI-MACS®.

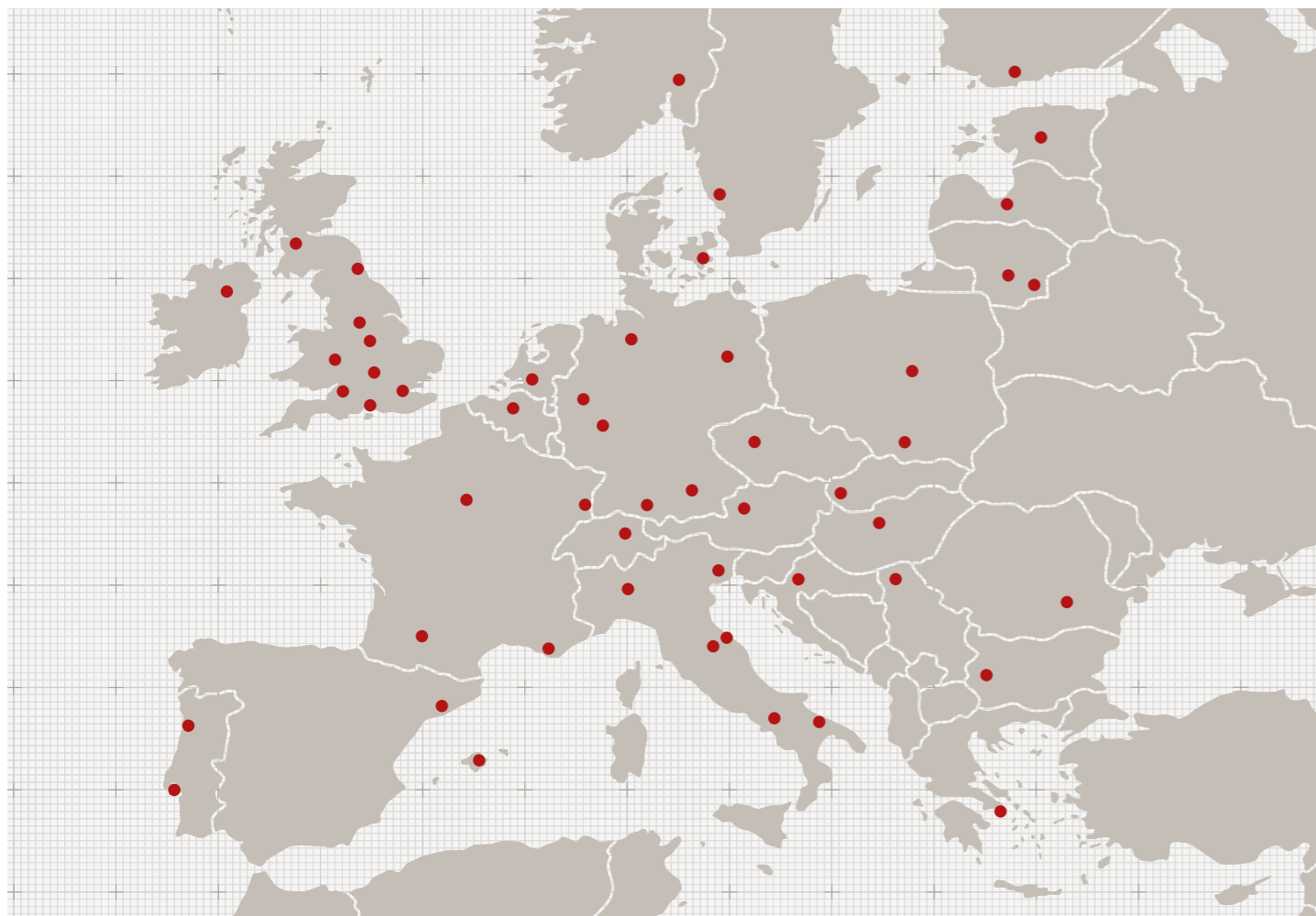
Contact us to find our network of exclusive distributors serving more than 5,000 fabricators across Europe and our numerous Quality Club Training Centres. This is our strategy to guarantee the best quality at all levels.

We can also offer you the security of our global LG After-sales Service with our experienced HI-MACS® experts all around the world.

All contact details of our network can be found at

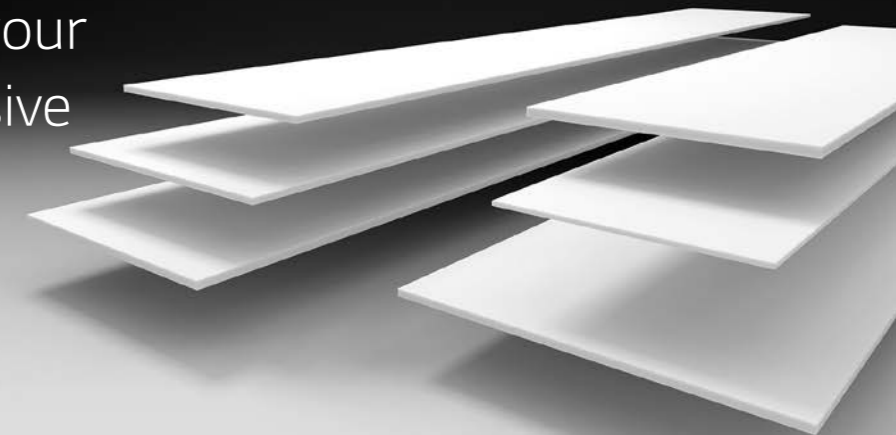
himacs.eu

Because Quality Wins.



PRODUCT SPECIFICATION

The perfect basis for your ideas: our comprehensive range of sheets.



Dimensions – Sheet material

Standard Format

Standard formats are available on stock, for specific thicknesses per colour, please refer to the colour chart on page 66, or contact your sales representative.

SHEET THICKNESS IN MM	SHEET WIDTH IN MM	SHEET LENGTH IN MM
4.5	930	3000 *
	760	2490
6	910	2490 *
	1350	3680 *
	760	3680
9	910	3680 *
	1350	3680 *
	760	3680
12	910	3680 *
	1350	3680 *
	1520	3680 *
	760	3000

Ultra-Thermoforming Format

SHEET THICKNESS IN MM	SHEET WIDTH IN MM	SHEET LENGTH IN MM
12	760	3680 **
	930	
	1520	

* Only available in S028 Alpine White.
** Only available in S928 Alpine White.

Special Format

Special format available on special request, minimum quantities apply. For further special formats, please contact your sales representative.

SHEET THICKNESS IN MM	SHEET WIDTH IN MM	SHEET LENGTH IN MM	COLOURS AVAILABLE
4.5	930	3000	Solid
6 9 12	910	2200 - 3680 Flexible length	Solid, Granite, Lucent and Ultra-Thermoforming
	1350	2200 - 3680 Flexible length	Solid, Granite
	1520	2200 - 3680 Flexible length	Solid, Granite, Lucent
20	760	2200 - 3680 Flexible length	Solid, Granite, Lucia

Sheet Material

- HI-MACS® is available in different thicknesses, formats and sizes. Perfect for maximum cutting and minimal costs. However, not all colours are available in every thickness. *See the table for availability below.*
- HI-MACS® sheet material is available in thicknesses of 4.5 mm, 6 mm, 9 mm, 12 mm and 20 mm as well as the corresponding sheet formats.

HI-MACS® is also available in special formulations:

- **HI-MACS Exteria®**
 - HI-MACS® FR – Low flammability, ETA Certified, IMO Certified, Norm EN 45 545 Class R1 HZL3 for fire protection on railway vehicles.
 - HI-MACS® UV+ – Advanced UV resistance, CSTB Certified.
 - **HI-MACS® Ultra-Thermoforming:** Advanced Thermoforming, up to 6 mm internal radius.
 - **HI-MACS® Intense-Ultra:** The best of two worlds – Ultra-Thermoforming and Intense Colour Tecnology
- For more information, see page 69.*

Standard Formats

760 x 2490 mm	760 x 3680 mm
910 x 2490 mm	910 x 3680 mm
760 x 3000 mm	930 x 3680 mm
1350 x 3000 mm	1350 x 3680 mm
	1520 x 3680 mm

Chemical and Technical Information

Over 20 years research and development by LG engineers, means that we are producing high-tech quality products.

Thanks to the new Thermalcure-technology, developed by LG, HI-MACS® performs better than the standard in Solid Surface.

For example you save precious time because it is easier to sand.

And thanks to the Thermalcure-technology used during production, HI-MACS® has excellent heat-resistance.

Chemical resistance

HI-MACS® is a fully homogenous material with no pores and is thus simple and easy to clean.

CLASS	STAINING AGENT	APPLICATION TIME	EVALUATION OF G002 CHANGES	EVALUATION OF S028 CHANGES
GROUP 1	Water	16h – 24h	5 to 4	5 to 4
	Toothpaste			
	Hand cream			
	Natural fruit and vegetable juice			
	Lemonade and fruit drinks			
	Meats and sausages			
	Animal and vegetable fats and oils			
	Yeast suspension in water			
	Salt (NaCl) solutions			
	Mustard			
	Lyes, soap solutions			
	Cleaning solution			
	Alcoholic beverages			
	Phenol and chloramine-T disinfectants			
	Citric acid (10% solution)			
GROUP 2	Coffee (120gr coffee per ltr. water)	16h	5	4 to 5
	Black tea (9gr tea per ltr. water)			
	Milk (all types)			
	Cola beverages			
	Wine vinegar			
	Alkaline-based cleaning agents (10% in water)			
	Hydrogen peroxide (3% solution)			
	Ammonia (10% solution of commercial concentrate)			
	Lipstick			
	Water colours			
	Laundry marking inks			
Ball point inks				
GROUP 3	Sodium hydroxide (25% solution)	10min.	5 to 4	4 to 5
	Hydrogen peroxide (30% solution)			
	Acetone			
	Trichlorothane			
	Other organic solvents			
	Concentrated vinegar (30% acetic acid)			
	Bleaching agents and sanitary cleaners containing them			
	Hydrochloric acid based cleaning agents			
	Tincture of iodine			
	Boric acid			
	Lacquers and adhesives (except fast-curing materials)			
	Amidosulfonic acid descaling agents (≤10% solution)			
	Nail varnish			
Nail varnish remover				
Stain or paint remover based on organic solvents				
GROUP 4	Acetic acid (5% solution)	20min.	5	4

Tests carried out in accordance to EN ISO 19712 for Solid Surface material, please see table (left) for results.



Evaluation

RATING LEVEL	DESCRIPTION
Rating 5	No visible change
Rating 4	Slight change in gloss and/or colour, only visible at certain viewing angles
Rating 3	Moderate change in gloss and/or colour
Rating 2	Marked change in gloss and/or colour
Rating 1	Surface distortion and/or blistering

a = Acids and alkalis, in concentrations stronger than those shown in group 3, which can be contained in commercial cleaning agents, can cause surface damage or marking, even with very short contact times. Any spillage of such materials should be washed off immediately.

Technical data sheet

HI-MACS® is extremely resistant to dirt and wear and tear, so that you can enjoy many years' peace of mind with the outstanding quality of your new product.

SPECIFICATION	UNIT	RESULT SOLIDS	RESULT GRANITE	TEST METHODS
Flexural-E-modulus	MPa	8900	7730	DIN EN ISO 178
Flexural strength	MPa	70.1	64.3	ASTM D638
Breaking elongation	%	1	1.1	DIN EN ISO 178
Tensile strength	MPa	69.5	56.3	DIN EN ISO 527
Density	g/cm3 kg/m3	1.75 1750	1.65 1650	ISO 1183 ISO 1183
Ball indentation hardness	N/mm2	257	239	DIN EN ISO 2039-1
Mohs hardness		2 to 3	2 to 3	EN 101
Pencil hardness		>9H	>9H	ISO 15184
Water absorption weight strength/thickness		<0,1% <0,1%	<0,1% <0,1%	DIN EN 438 Part 12
Impact resistance impactor drop ball test (fall height)	N mm	≥25 ≥1500	≥25 ≥1500	E DIN EN 438, 02/02 Part 2/20 E DIN EN 438, 02/02 Part 2/21
Slip resistance		>0,32 – 0,9		GMG100 (replaces R9)
Slip resistance		angle of acceptance of more than 10° to 19° = R10		DIN 51130
Climate change resistance	°C	≥0,05	≥0,05	AMK
Dry heat (pan base)	°C	≥100 (7C)		DIN 68 861, Part 7, 04-'85
Damp heat (pan base)	°C	≥100 (7C)		DIN 68 861, Part 8, 04-'85
Temperature change resistance	°C	no change		UNI 9429
Resistance to cigarette burns		6C	6B	DIN 68 861, Part 6, 11-'82
Scratch resistance		4D	4B	DIN 68 861, Part 4, 11-'81
Electrostatics Conductivity	1 x 10 ¹² Ω	insulating non-conductive		DIN IEC 1340-4-1, 04-'92 EN 61340-5-1
Thermal conductivity	W/mK	0.636	0.55	DIN EN 12664
Thermal resistance	m2K/W	0.038	0.045	DIN EN 12664
Thermal Expansion Coefficient for Standard HI-MACS® Products	mm/mK m/m/°C	0.045 45 x 10 ⁻⁶	0.055	DIN EN 14581
Water vapor transmission properties – diffusion resistance factor	μ	18607	16150	DIN EN ISO 12572
Dimensional change by change in relative humidity length thickness mass	% % %	-0.03 0.06 0.05	-0.02 0.03 0.05	DIN EN 318, edit. 5, 1998
Resistance to boiling water increase in weight increase in thickness	% %	<0,1 <0,1	>0,1 <0,1	E DIN EN 438, 02/02 Part 2/12
Light fastness (Xenon)	scale 0 – 10	better than 6	better than 6	DIN 53 387, 04-'89
Food tolerance		suitable for all colours		LMBG § 31
Hygiene		suitable	suitable	LGA Hygiene Certificate

HI-MACS® Fire Classification

MATERIAL CATEGORY	MATERIAL THICKNESS	PRODUCT TESTED	TEST METHOD	RESULT
HI-MACS® Standard range	12 mm	HI-MACS® colour range*, M551, G554, Q001, Z005.	DIN 4102	B1
		S028	DIN 4102 / ABP	B1
		S028	DIN 5510	passed (S4 / SR2 / ST2 und FED30 < 1)
		S028, T017, VW01, W001	NF P92-501	M1
HI-MACS® Standard range	12 mm plus fibre cement board	HI-MACS® colour range*	EN 13501-1	B - s1 - d0
		HI-MACS® colour range*	EN 13501-1	B - s1 - d0
HI-MACS® Special Formulations	12 mm	S728 CE MED	DIN 4102	B1
		S728 CE MED	EN 13501-1 / SBI	B - s1 - d0
		S728 CE MED	EN 45545	passed R1/HZ3
		*IMO S728 CE MED + IMO colour range in Solids	Module B & Module D	IMO certified
		S928 Ultra-Thermoforming	DIN 4102	B1
HI-MACS Exteria®	12 mm	S928 Ultra-Thermoforming	EN 13501-1	B - s1 - d0
		S922U Intense Ultra	DIN 4102	B1
		S728 HI-MACS®-FR	DIBT	ETA
		S828 HI-MACS®-UV+	CSTB	Avis Technique
		S728 HI-MACS®-FR, S828 HI-MACS®-UV+	NF P92-501	M1

* For details of HI-MACS® colour range please contact your sales representative or refer to our reports: 2019-2213, 167467, 347196, MED233220CS

COLOURS

Colours are key in design. Elegant Alpine White, warm Toffee Brown or mystical Cima. We have virtually any colour you could wish for. No matter what colour you choose, HI-MACS® remains 100% homogeneous.

Extra service on demand

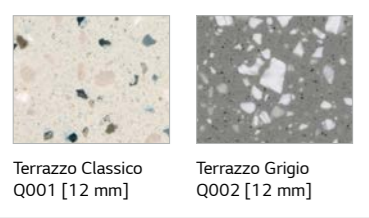
If needed, LG Hausys Europe can produce different dimensions and bespoke colours. To learn more about the conditions, please contact us at himacs.eu



Terrazzo

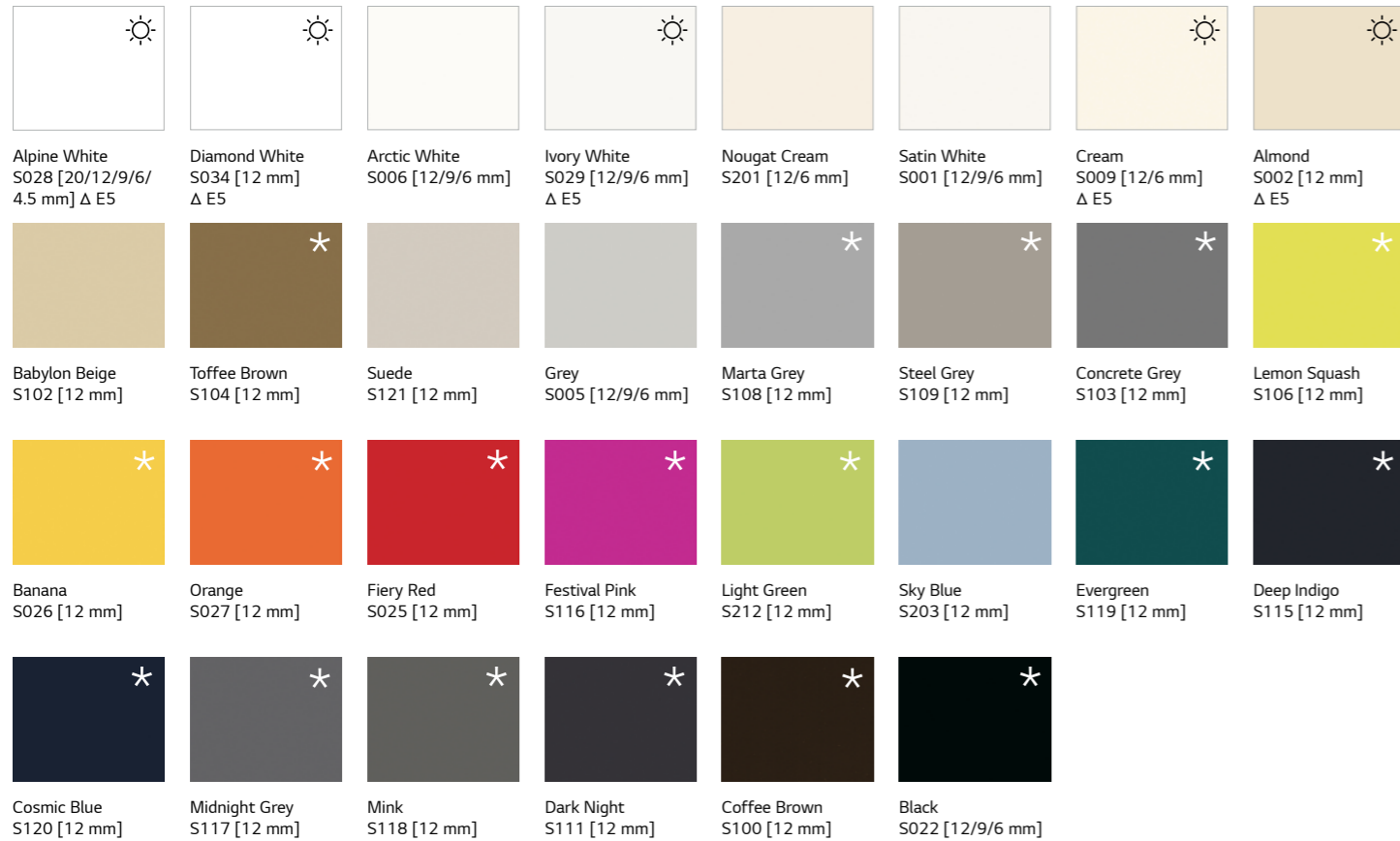
The coarse-grained, 'splattered' look of these two colours radiates a perfect blend of longevity and elegance.

NEW



Solids

From elegant to extravagant, classic to ultra-contemporary.

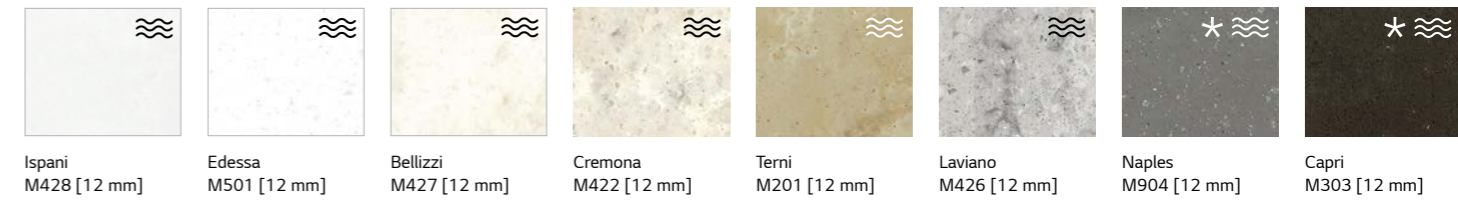
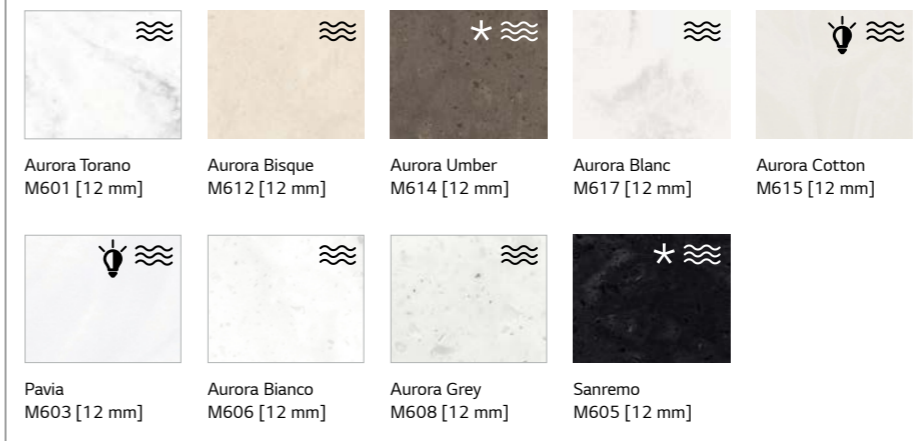


20 mm: Colours indicated above are available on stock. Other colours are available on special request except for Chic Concrete, Shadow Concrete, Ebony Concrete and Marmo Collection. Minimum quantities order apply.

Marmo

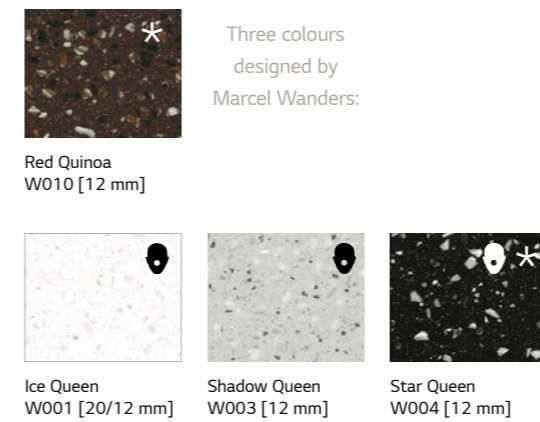
Captivating random veined texture, reminiscent of marble.

NEW AURORA COLOURS



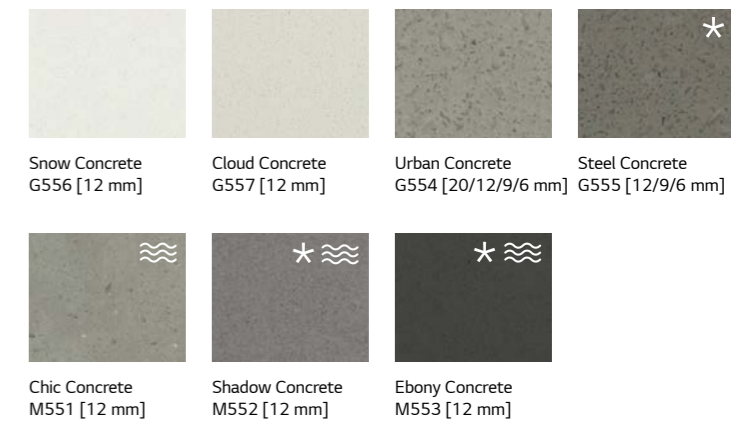
Lucia

Natural trendy colours characterised by linear-edged, midsize particles: three of these are designed by Dutch Star Designer, Marcel Wanders.



Concrete

Warm tone, concrete-like finishes are now available in the solid surface material, providing completely new opportunities for architects and designers.



Aster

With transparent grains and mother of pearl shimmer.



Strato

The Strato Collection enhances the HI-MACS® colour range with brand new design possibilities: the distinctive lines create geometry through its natural appearance and subtle look.



Volcanics

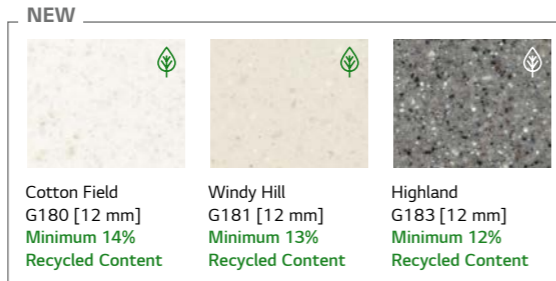
Full of depth and mysticism, akin to a precious natural stone but with all of the advantages of "Natural Acrylic Stone™".



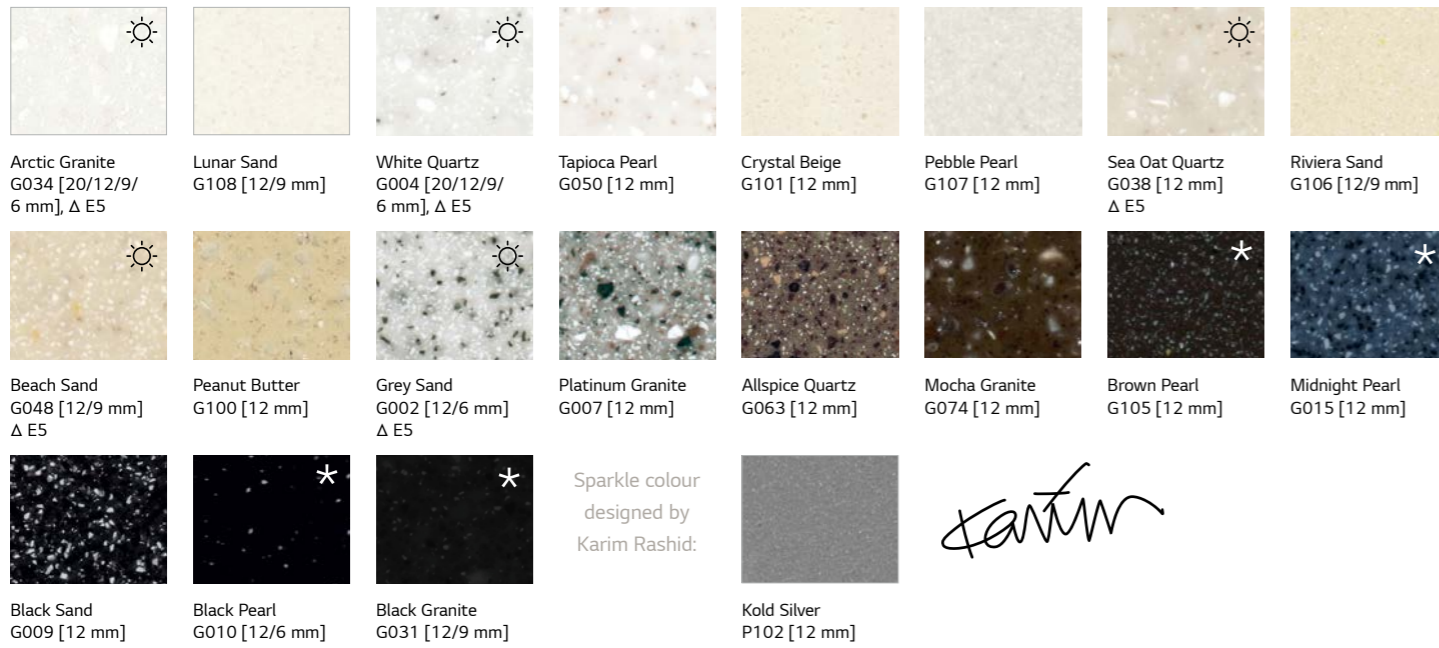
Gemini VW01 [12 mm] Minimum 14% Recycled Content
 Tambora VE01 [12 mm] Minimum 16% Recycled Content
 Santa Ana VA01 [12 mm] Minimum 13% Recycled Content
 Frosty VA22 [12 mm]
 Maui VG21 [12 mm]
 Cima VB02 [12 mm]

Granite, Sparkle, Quartz, Sand & Pearl

A huge selection of textures and colours. Natural, elegant and perfect in combination.



NEW
 Cotton Field G180 [12 mm] Minimum 14% Recycled Content
 Windy Hill G181 [12 mm] Minimum 13% Recycled Content
 Highland G183 [12 mm] Minimum 12% Recycled Content



Arctic Granite G034 [20/12/9/6 mm], Δ E5
 Lunar Sand G108 [12/9 mm]
 White Quartz G004 [20/12/9/6 mm], Δ E5
 Tapioca Pearl G050 [12 mm]
 Crystal Beige G101 [12 mm]
 Pebble Pearl G107 [12 mm]
 Sea Oat Quartz G038 [12 mm] Δ E5
 Riviera Sand G106 [12/9 mm]
 Beach Sand G048 [12/9 mm] Δ E5
 Peanut Butter G100 [12 mm]
 Grey Sand G002 [12/6 mm] Δ E5
 Platinum Granite G007 [12 mm]
 Allspice Quartz G063 [12 mm]
 Mocha Granite G074 [12 mm]
 Brown Pearl G105 [12 mm]
 Midnight Pearl G015 [12 mm]
 Black Sand G009 [12 mm]
 Black Pearl G010 [12/6 mm]
 Black Granite G031 [12/9 mm]
 Sparkle colour designed by Karim Rashid:
 Kold Silver P102 [12 mm]

Eden Plus

A one-of-a-kind palette with warm natural shades and various grain sizes. What makes the collection unique: it contains a minimum of 6% or 10% of SCS certified pre-consumer recycled content.



Pause R009 [12 mm] 6% Recycled Content
 Ripe Cotton G518R [12 mm] 10% Recycled Content
 Simplicity R943 [12 mm] 6% Recycled Content
 Lemongrass G503R [12 mm] 10% Recycled Content
 Honeysuckle G504R [12 mm] 6% Recycled Content
 Portland GT945 [12 mm] 6% Recycled Content

The Eden Plus collection is available upon request. Minimum quantity orders apply.

Scoring eco-credits helps your project and the environment

Leadership in Energy and Environmental Design (LEED) is a widely used, voluntary system for certifying the high performance of buildings from the US Green Building Council (USGBC). LEED certifies buildings using a credit system. The use of HI-MACS® contributes towards satisfying the EQ Credit for Low-emitting Materials in the Indoor Environmental Quality (EQ) category.

HI-MACS® Eden Plus products can contribute to:

- MR BPDO – Environmental Product Declaration – Option 1: Environmental Product Declaration.
- MR BPDO – Sourcing of Raw Materials – Option 1: Raw Material Source and Extraction Reporting
- MR BPDO – Material Ingredients – Option 2: Material Ingredient Optimization
- MR BPDO – Material Ingredients – Option 3: Supply Chain Optimization
- EQ Credit: Low-Emitting Materials

HI-MACS® ADVANCED SERIES

The HI-MACS® sheet range for special applications

The ability to use HI-MACS® in high-quality interior design is growing thanks to our wide range special application sheets. Projects with special tendering criteria and challenging design requirements can now be considered.

HI-MACS®-FR – Minimal flammability

The HI-MACS®-FR quality with reduced flammability is currently available in Alpine White S728 from the Solid Collection. HI-MACS® FR has the fire protection classification "B-s1-d0" according to EN 13501 (Single Burning Item test (SBI test))*.



Alpine White S728 [12 mm] Δ E5

HI-MACS® -UV+

HI-MACS® UV+ S828 (Alpine White) is the new exterior formulation offering better UV resistance, which is particularly important when the façade is exposed to high levels of sunlight. It meets all requirements of the categories of Avis Technique and CSTB. In addition the formulation achieved FR in M1 France. Furthermore, the unique properties of HI-MACS® S828 UV+ allow for the use of the highly effective UV-C disinfection method, frequently used in the healthcare sector.



Alpine White S828 [12 mm]

HI-MACS® Ultra-Thermoforming

HI-MACS® Ultra Thermoforming sheets are currently available in Alpine White S928 from the Solid Collection. For more information on the design possibilities of HI-MACS® Ultra Thermoforming products, see page 24.



Alpine White S928 [12 mm]

HI-MACS® Intense Ultra

The brand new HI-MACS® Intense Ultra is a revolution for the Solid Surface market which opens new possibilities for surface design. The aptly named Intense, which is a brand new material formulation, gives a powerful and remarkable performance. The product range combines the characteristics from two disparate worlds: Intense Colour Technology and Ultra-Thermoforming.



Intense Ultra Grey S923U [12 mm]
 Intense Ultra Dark Grey S924U [12 mm]
 Intense Ultra Black S922U [12 mm]

* The basic HI-MACS® material is identical for every colour but it is important to note that darker and more heavily pigmented colours will show dust, scratches, haziness, marks left by hard water and other ordinary wear and tear more noticeably than lighter textured colours. Therefore colours marked with a * are less suitable for applications that are exposed to extensive surface contact such as worktops located in heavy traffic area.

⚠ Some HI-MACS® colours are particularly suitable for outdoor applications because of their good UV-resistance. HI-MACS® offers a 10 Year Warranty on colours' UV resistance and loss of gloss over 40%, 10 Year Warranty on colour leaching and 20 Year Warranty on colour peeling, swelling or delaminating. The warranty is applicable after the first installation and is only valid for the sheet material; adhesives are excluded. The conditions for this warranty are based on practical experience and on-going tests.

≈ Marmo is a randomly veined product, specific fabrication guidelines need to be followed. Ask your sales partner for more information or visit himacs.eu.

☼ Lucent colours have a higher level of translucency, more evident when combined with light sources.

☽ Colours with this mark have a semi-translucent effect, evident when combined with light sources.

♻ Certified to contain pre-consumer recycled content.

✎ Design Collection by Marcel Wanders.

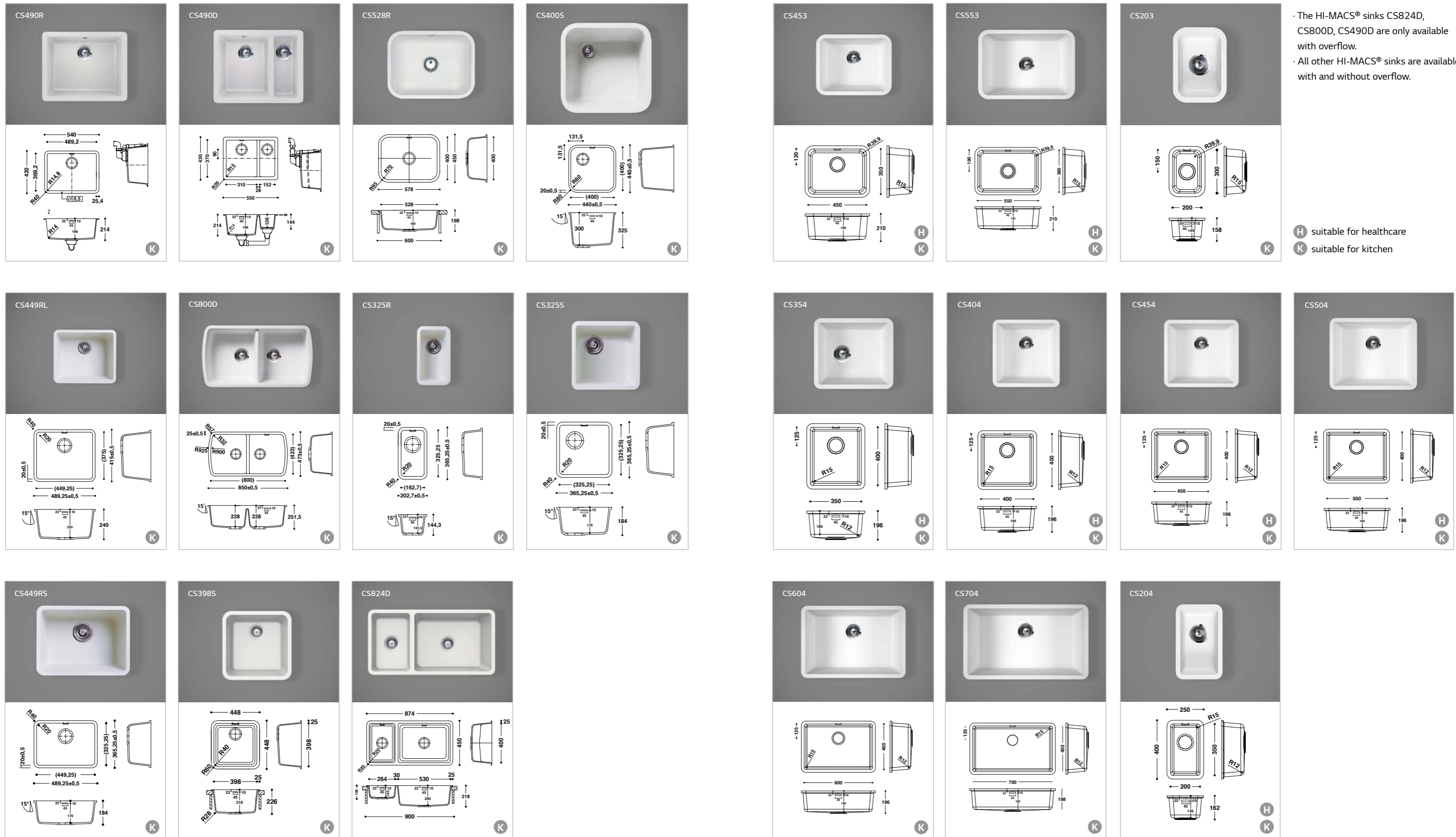
There may be deviations between the illustrated and actual colours owing to printing techniques. To receive the detailed colour range, please contact us at himacs.eu.

Sinks.

Spacious and elegant.

HI-MACS® Sinks for kitchen and healthcare applications

Spaciousness, durability and hygiene are all key quality features when choosing a sink for the kitchen or healthcare facility. The top quality models in the HI-MACS® range offer it all. These coordinated sinks are installed as undermounted creating extremely hygienic sink areas. Special custom-made creations are also an option.



- The HI-MACS® sinks CS824D, CS800D, CS490D are only available with overflow.
- All other HI-MACS® sinks are available with and without overflow.

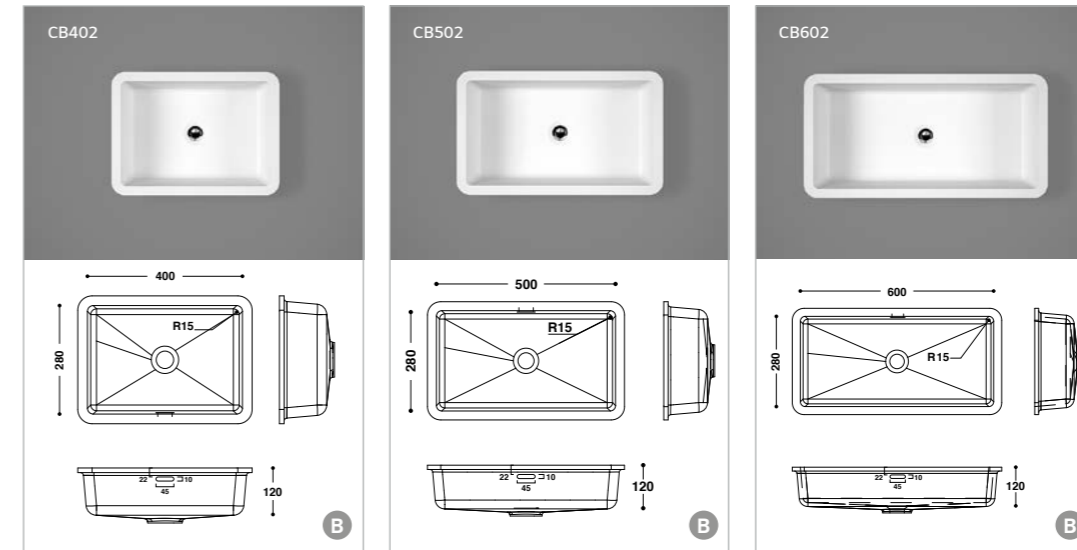
H suitable for healthcare
K suitable for kitchen

Basins. Best design for the bathroom.



HI-MACS® Basins for the bathroom

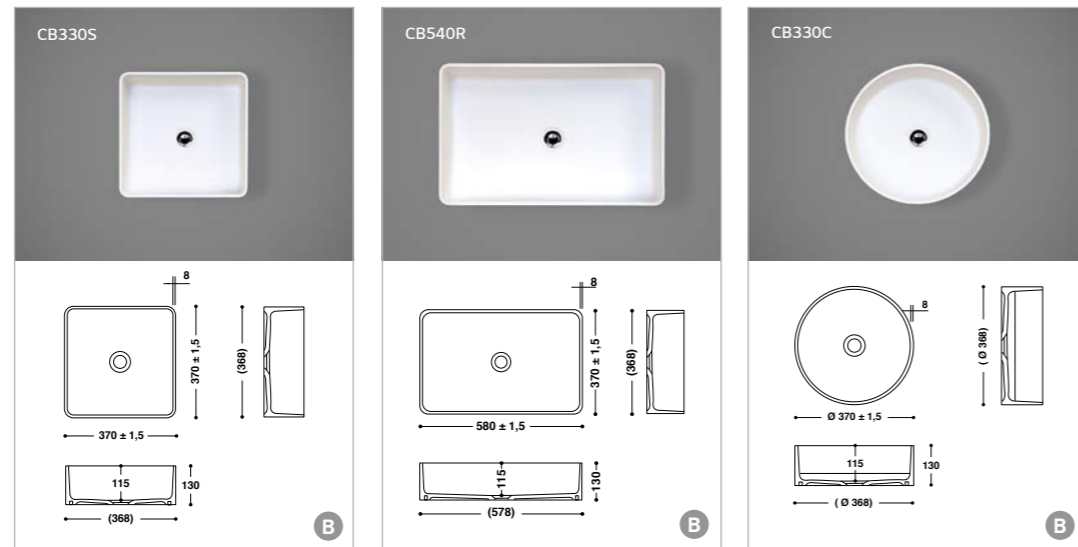
Rectangular or oval, deep or shallow basins, small bathrooms or comprehensive solutions. The HI-MACS® range offers creative architects and bathroom planner's numerous options.



B suitable for bathroom

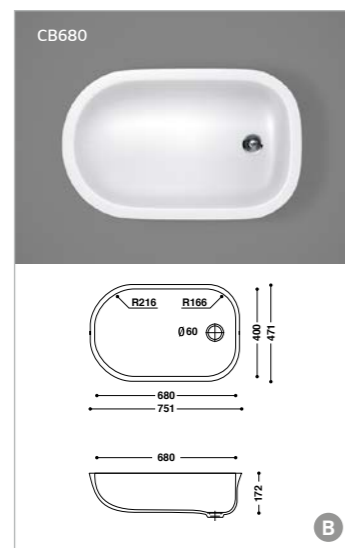
HI-MACS® Basins for the bathroom – Top mount installation

These three basins are HI-MACS® answer to the trend for linear designs. All three basins were exclusively designed as top-mounted bowls. The narrow radius of the two rectangular models creates exceptionally spacious basins.



HI-MACS® Baby Bath

The neo-natal ward of a hospital is the one place where maximum hygiene, ergonomics and warmth are essential. The ergonomic shape of the bowl is specifically designed for babies.



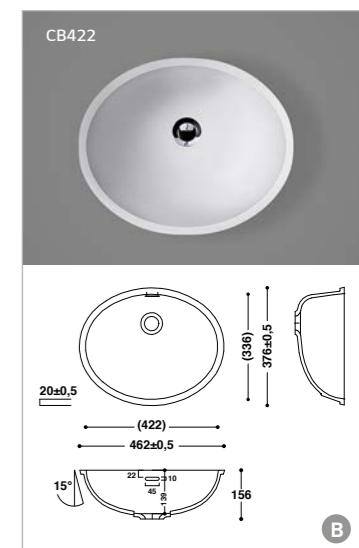
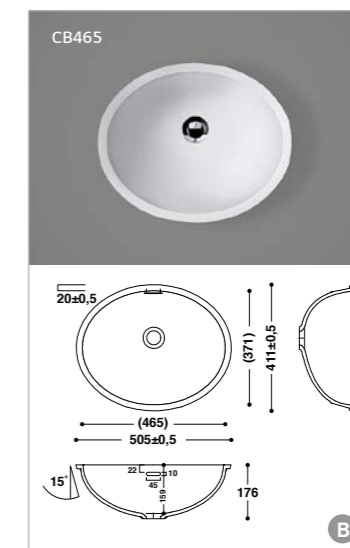
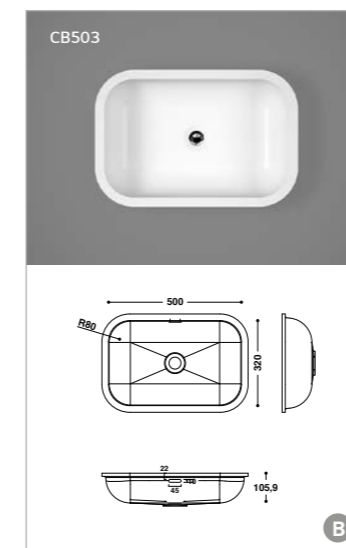
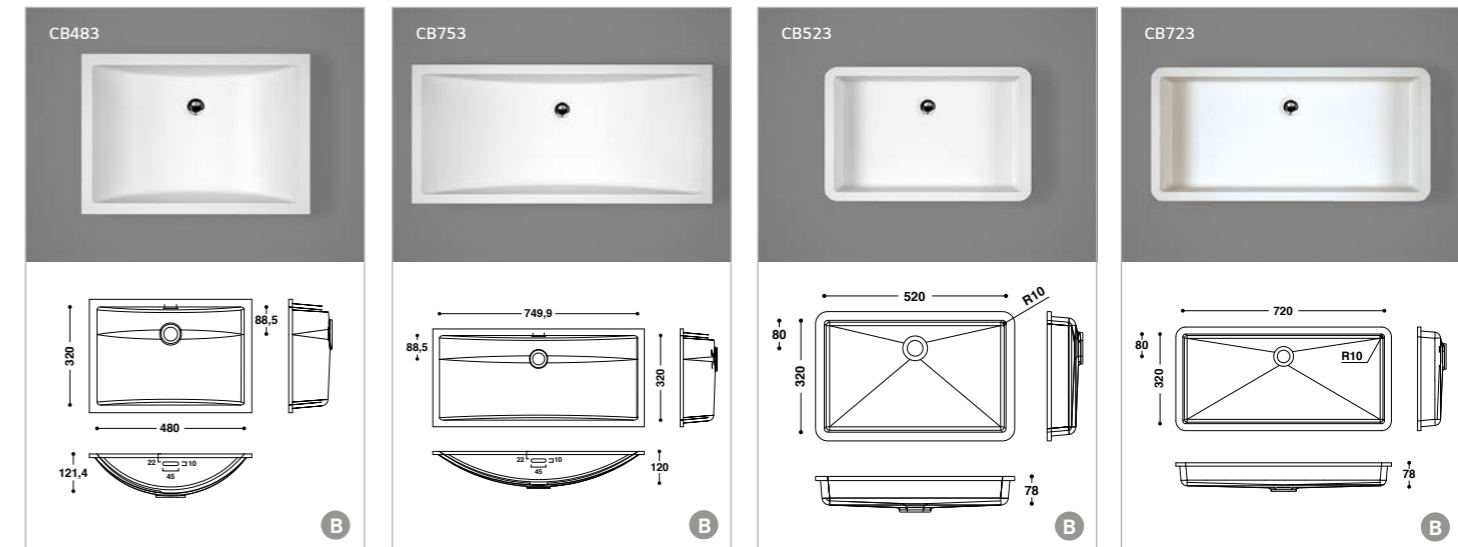
- The HI-MACS® basins CB523, CB723, the HI-MACS® Top Mounted Basins Collection and the HI-MACS® Baby Bath are only available without overflow.
- All other HI-MACS® basins are available with and without overflow.



Alpine White S028

HI-MACS® sinks, washbasins, Baby Bath, baths and shower trays are exclusively available in Alpine White S028.

Warranty: 15 years on all precast HI-MACS® basins, sinks, baby bath, baths and shower trays.



New Bath and Shower Tray Collection.
Even more choices from HI-MACS® for
a beautifully designed bathroom.



Please note:

1. The delivery includes either the bath or shower tray (as shown in the sketch) and the matching installation material consisting of height-adjustable feet, a sound-insulating mat and a wooden stabilisation board.
2. Sheet material is also needed to create the installation seen in the photos.

HI-MACS® Baths

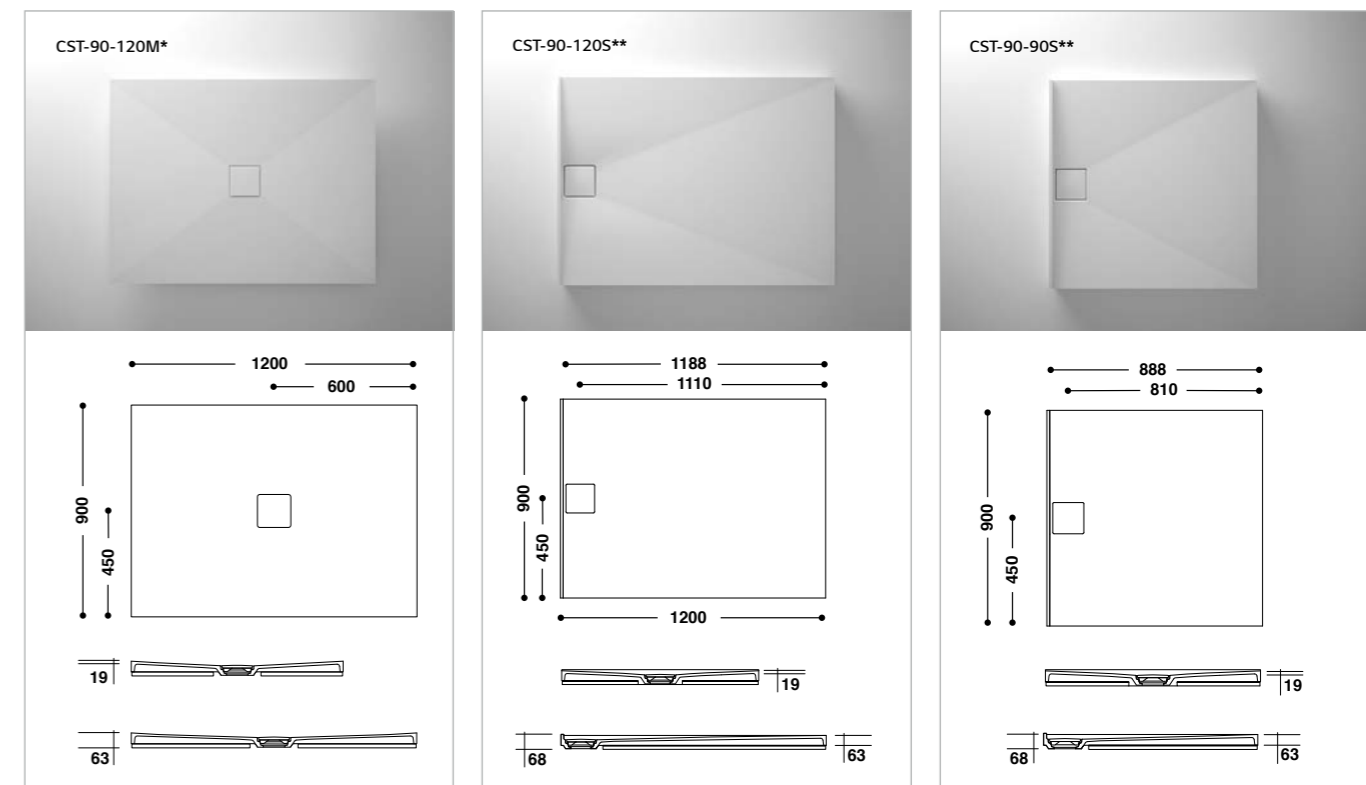
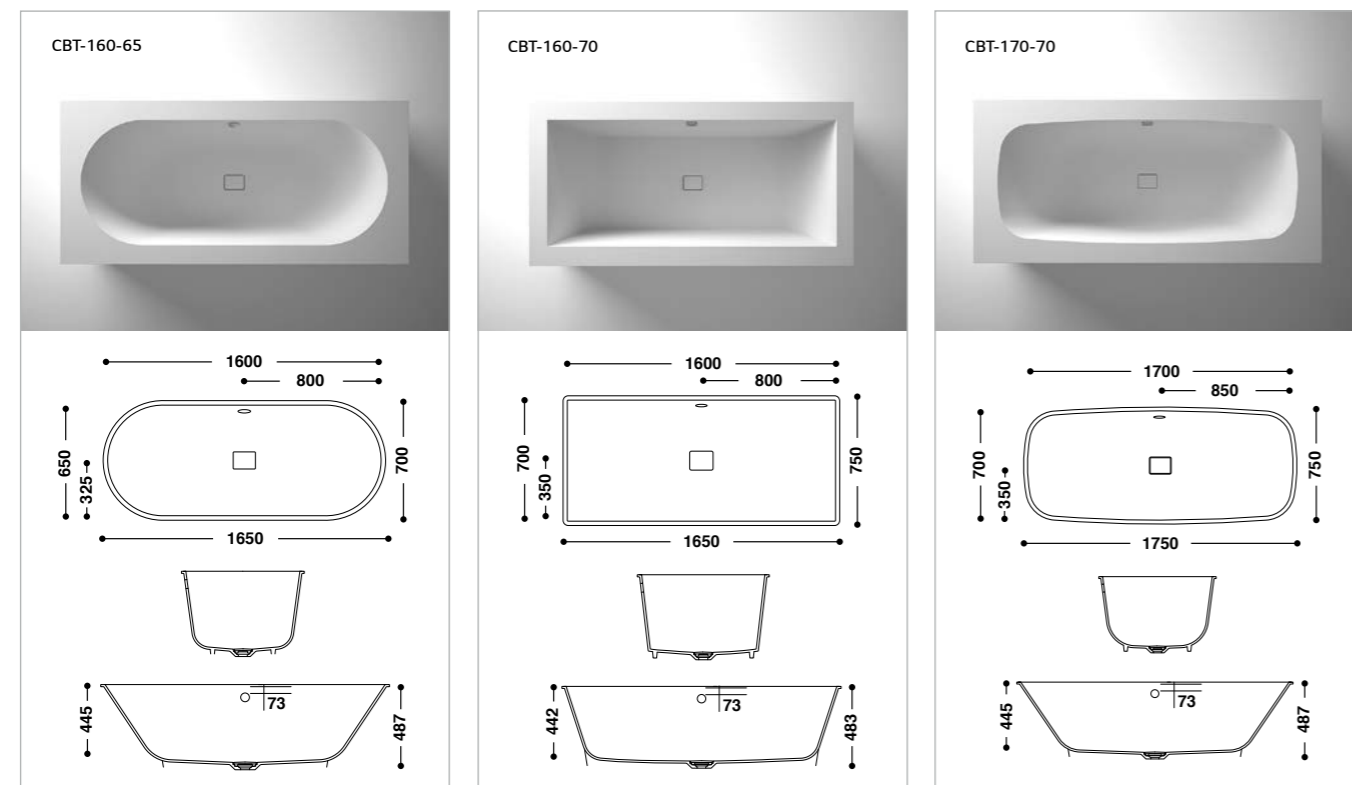
Alongside washbasins, the bath is the central element of a beautifully designed bathroom. And now both are available in the same material: sleek, but also functional, in a useful, aesthetic unit. All three new baths are designed for integrated installation. The bath is inserted flush-mounted within the panel, so that visually the

product is seamless: no visible joints and therefore easy to maintain with hygienic surfaces. The new baths from HI-MACS® are the perfect way to complete the range and make it more than just a bathroom – they transform it into an all-round feel-good experience.

HI-MACS® Shower Trays

HI-MACS® is the perfect material for bathrooms, with its warm, silky smooth feel. And the properties that make it so, also create a product which is incredibly easy to clean, and totally hygienic. The new shower trays from HI-MACS® offer all of these advantages and

more: three simple models extend the opportunities to bring the design and functional features of the bathroom to the forefront to design perfect wellness areas in homes, hotels and public spaces.



* Middle Drainhole

** Side Drainhole

** Side Drainhole

Please feel free to contact us
for further information.

HI-MACS®. Because Quality Wins.

European Headquarters:
LG Hausys Europe GmbH
Lyoner Str. 15
60528 Frankfurt
Germany
info@himacs.eu

To find the contact for your region, please visit our website.

himacs.eu



HI-MACS®, Natural Acrylic Stone™ and HI-MACS Exteria® are registered trademarks of LG Hausys Europe GmbH. All other trademarks and product names are trademarks or registered trademarks of their respective rights owners. The information contained in this brochure is intended to be for information only and can be amended at any time without prior notification. ©2021. LG Hausys Europe GmbH. All rights reserved.

