



[www.lghausysusa.com](http://www.lghausysusa.com)

# HI-MACS®

Aurora Collection



Solid Surface



## Aurora Collection

The Aurora Collection by HI-MACS® is jazz and honey. The soft colors create music and rhythm in any space. The sweet balance of hues and pattern make each color the perfect complement to your modern design. The collection's trendy nuances are both futuristic and classic.

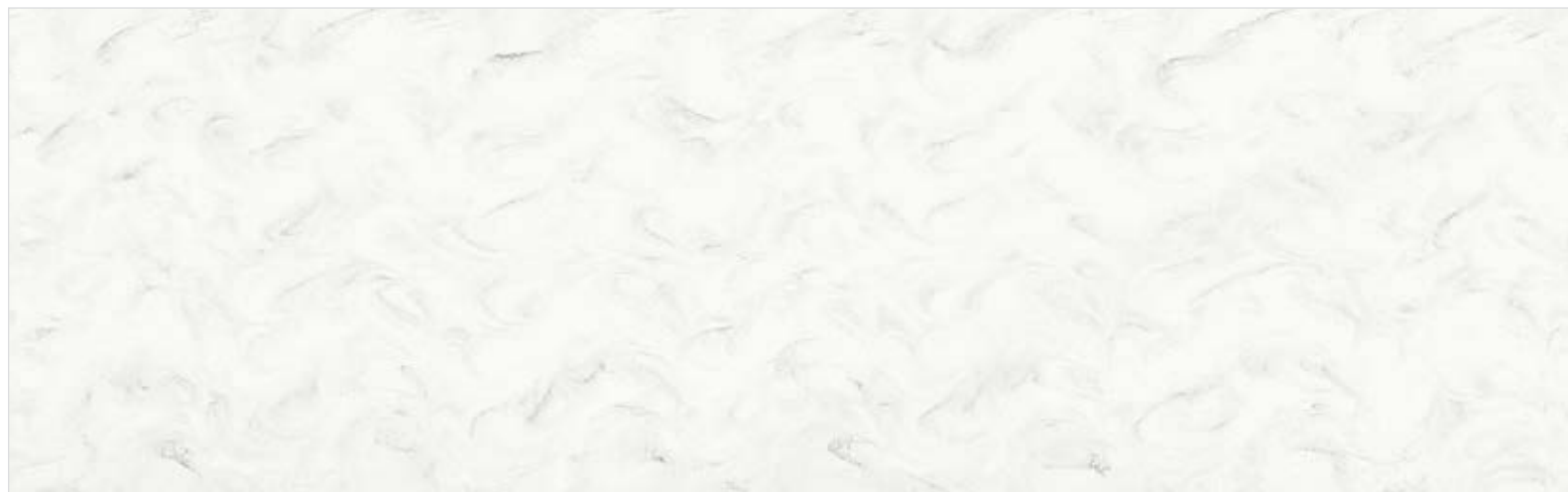


**Aurora Blanc**  
M617

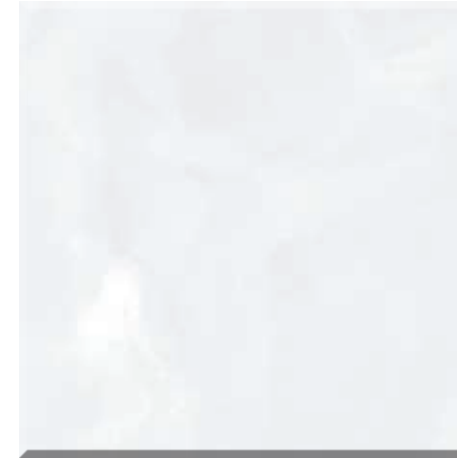
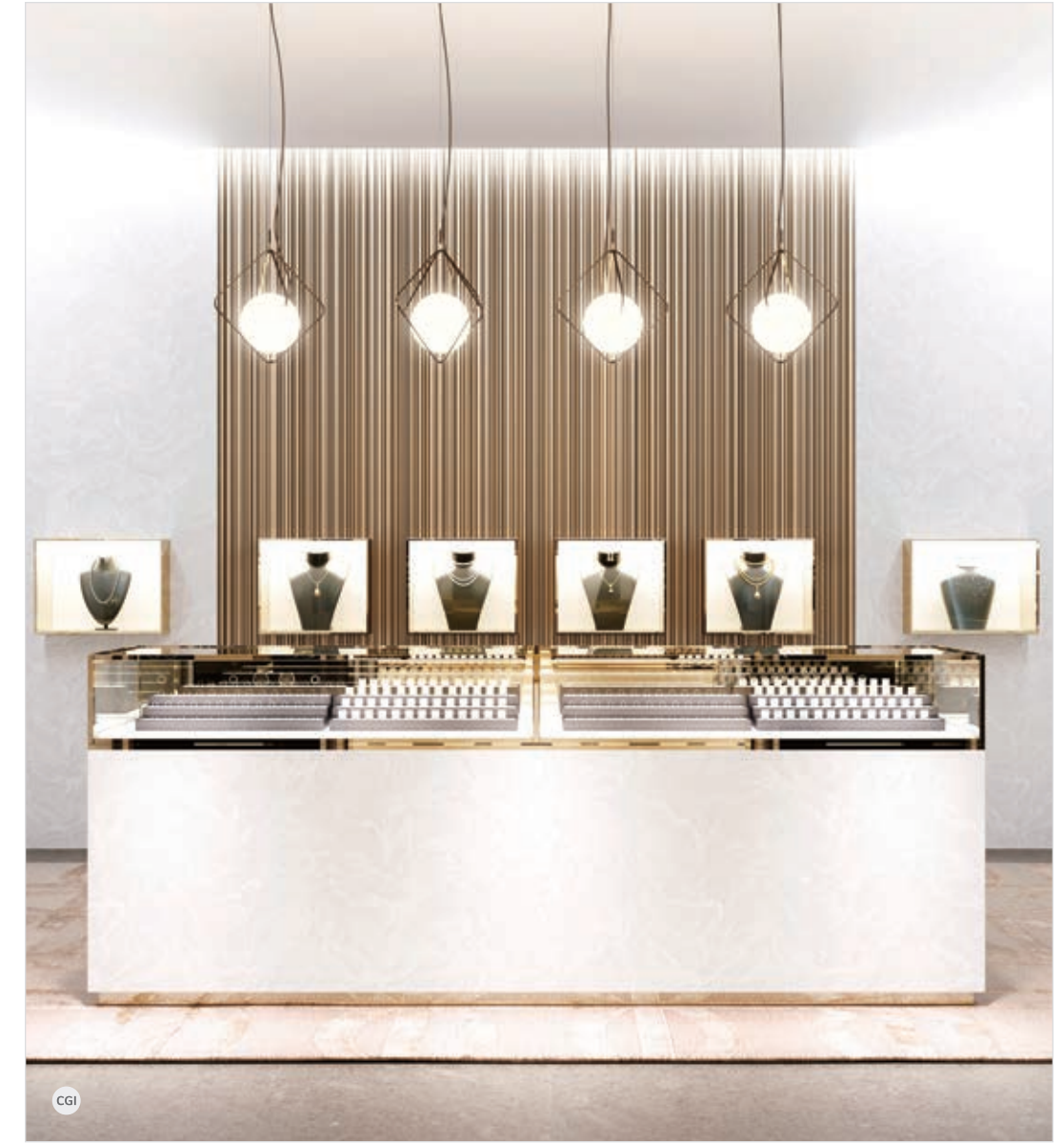


As one of the lighter Aurora hues, the egg-shell white is clean but subtle, not drawing too much attention while acting as the best canvas for your room.

Dimension: 30" x 145" (760mm x 3680mm)

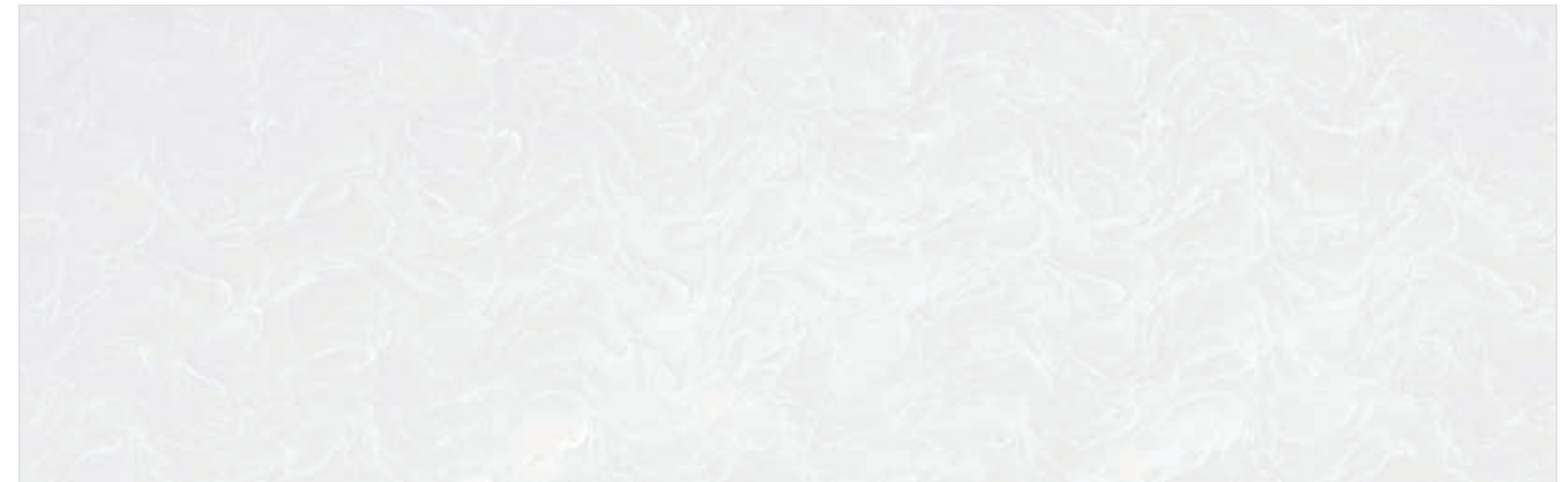


**Pavia**  
M603



The clean, crisp, and silky color echoes elegance. With white waves floating lazily throughout, this aesthetic makes a statement but never disturbs the overall calm of your design.

Dimension: 30" x 145" (760mm x 3680mm)



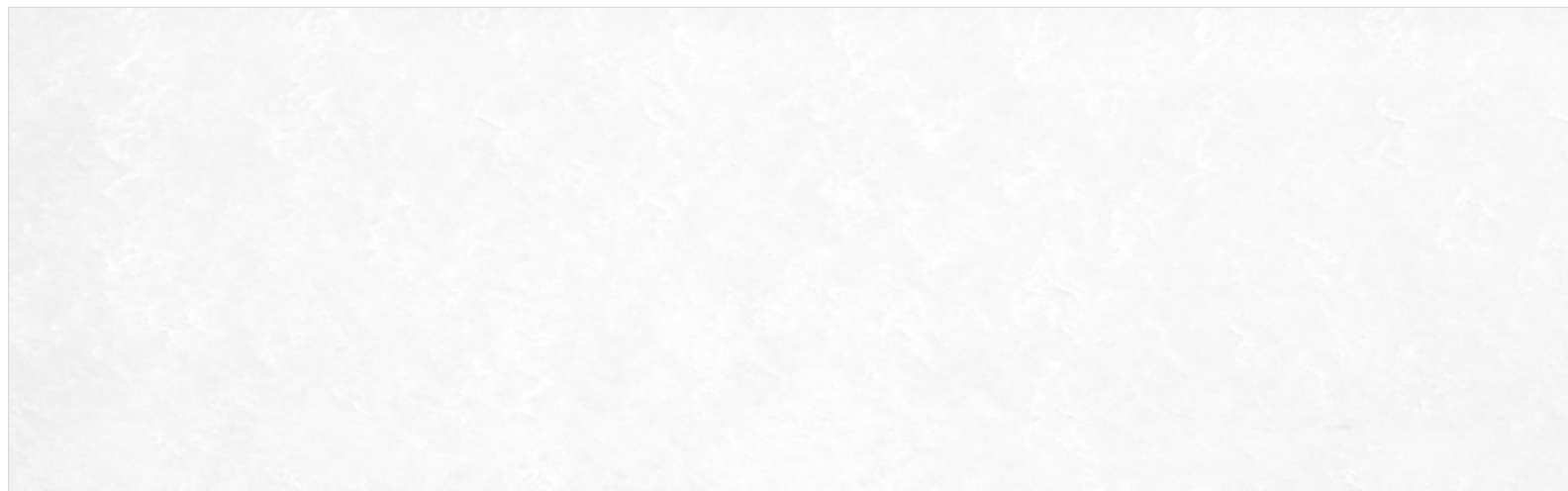


**Aurora Frost** *NEW*  
M702



Capture the beauty of snowflakes that never melt with Aurora Frost. Faint veins of white flash across the pale base like floating meteor showers. The design is at once hypnotizing, like the first snowfall of the season, and accessible, as our exquisite natural world.

Dimension: 30" x 145" (760mm x 3680mm)

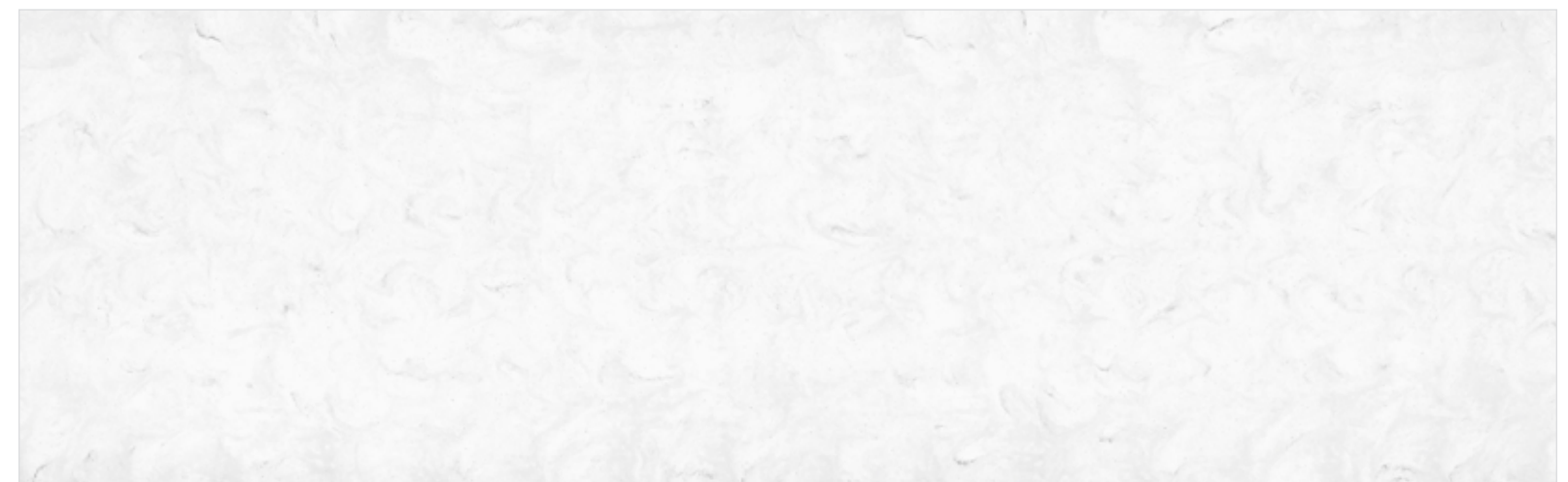


**Aurora Bianco**  
M606

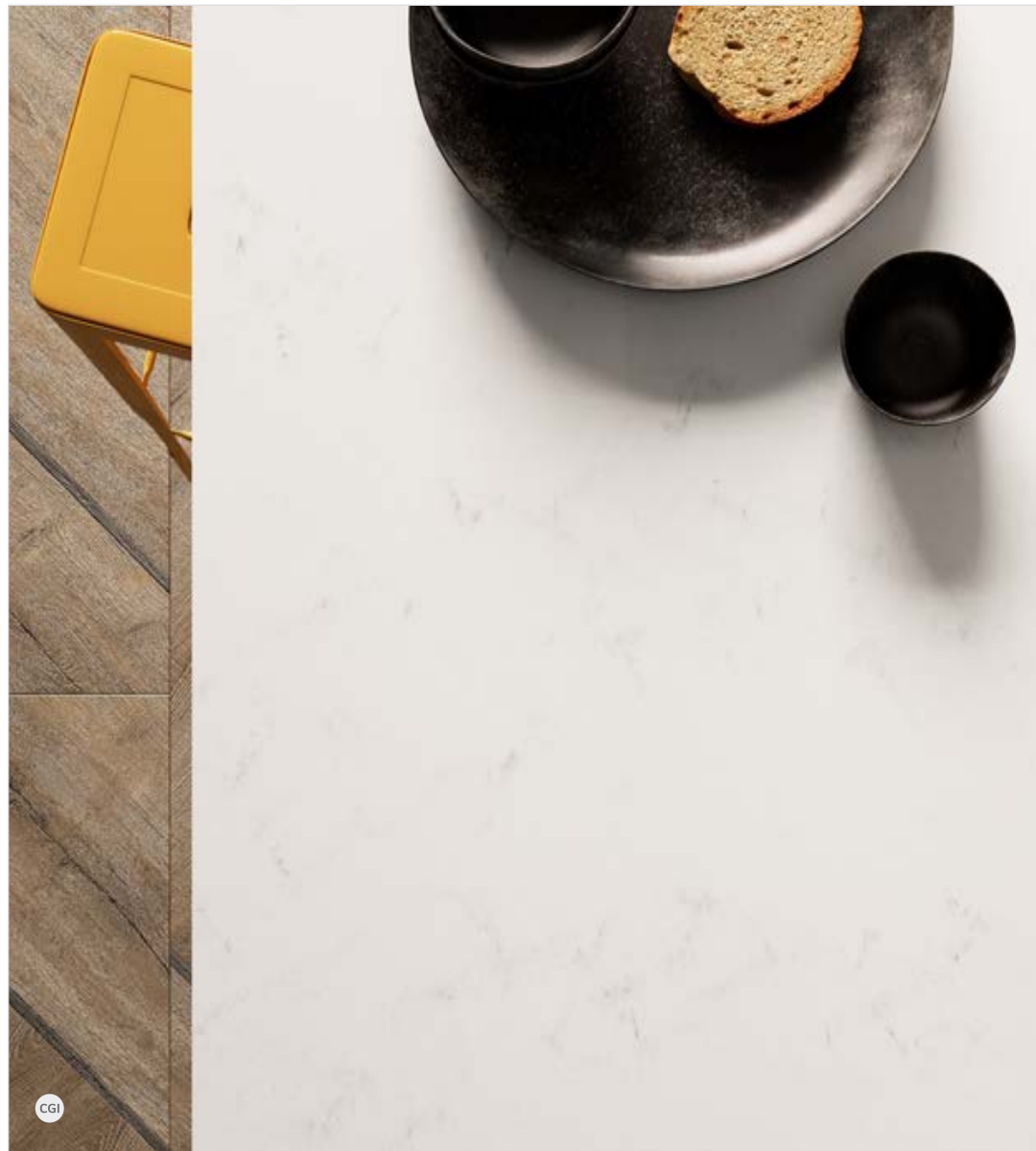


With grace and easiness, white envelops its surroundings like a blanket of snow. The brightness radiated by this classic color creates an illusion of space, for an elevated sense of freedom. Swirls bedaub in light grays for subtle movement, intimating a surface delicate and fluffy.

Dimension: 30" x 145" (760mm x 3680mm)

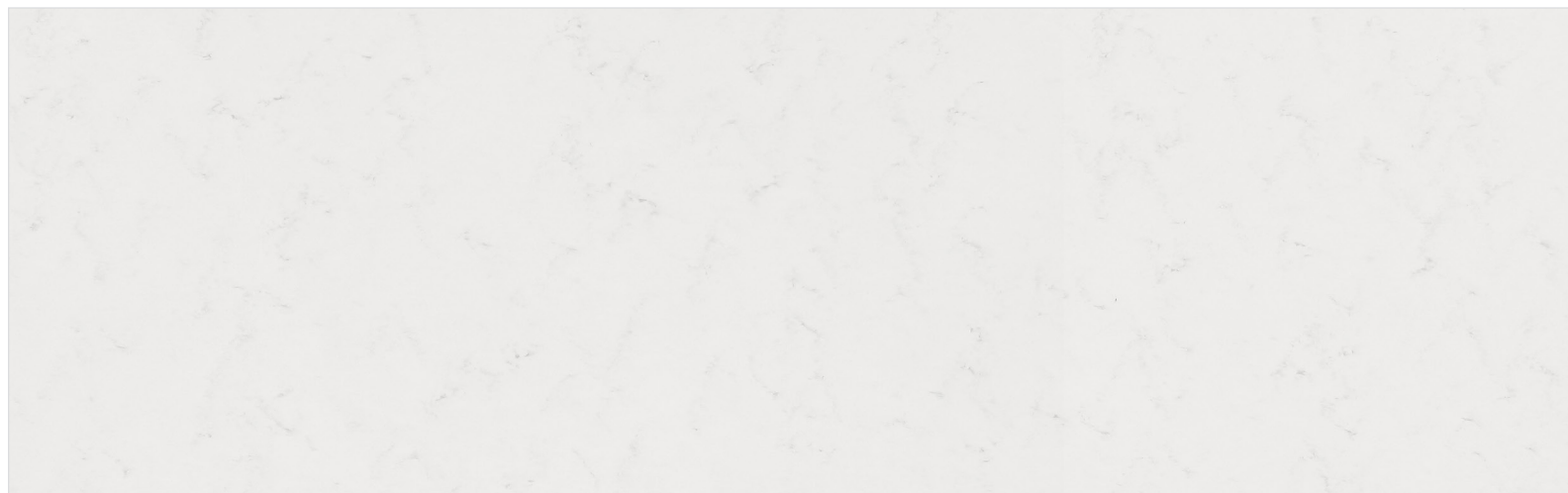


**Aurora Ecrú** *NEW*  
M701

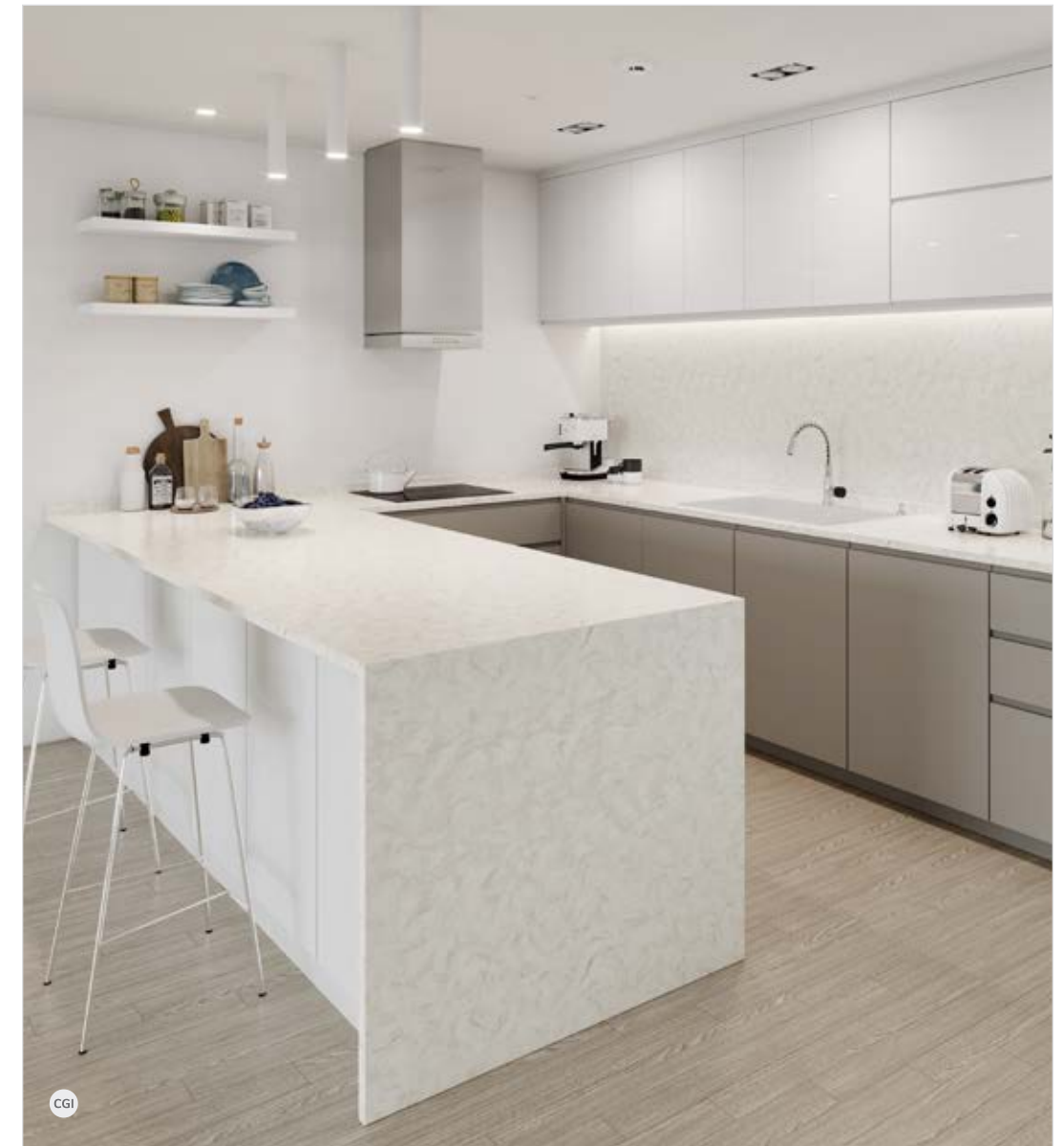
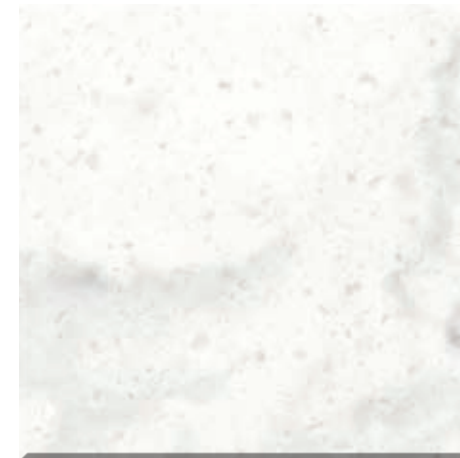


Not to be mistaken for an unremarkable neutral, Ecrú's profile is elegant and full of promise. One of the softest shades to wake up to every day, its base mellows the spirit. Hushed tonal veins, the other smooth operator, locks in the contemporary feel.

Dimension: 30" x 145" (760mm x 3680mm)

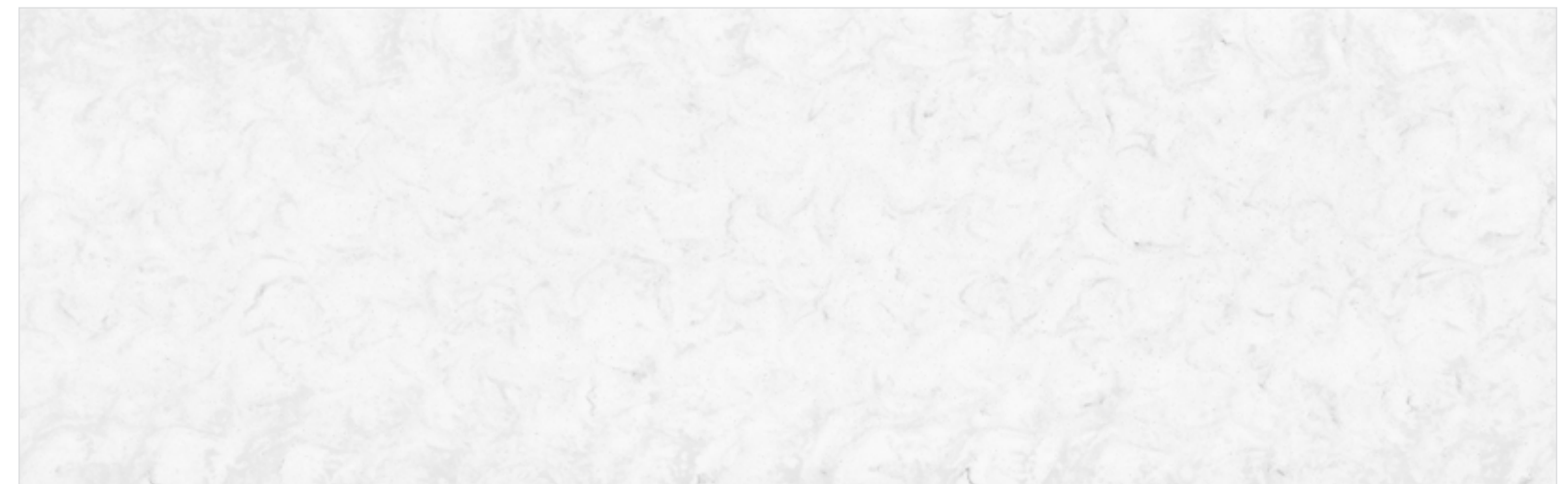


**Aurora Cream**  
M607



Fluffy and light, the meld of bright hues and colors create a wonderland of ivory. This classic design would look exceptional in a modern or contemporary space.

Dimension: 30" x 145" (760mm x 3680mm)



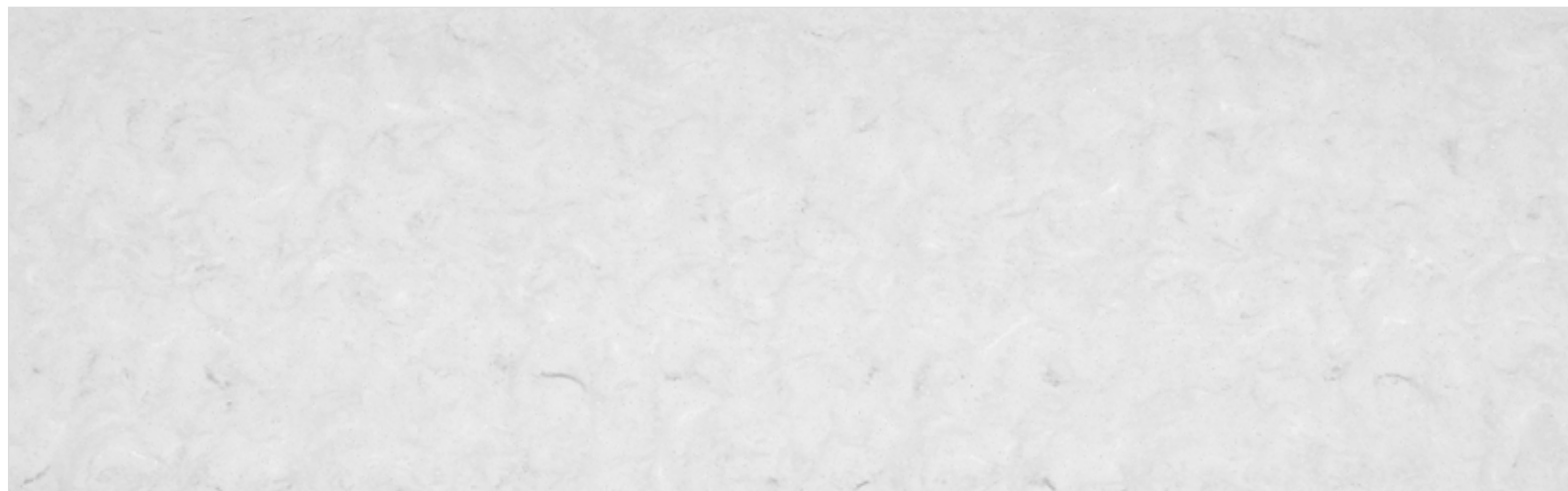


**Aurora Gray**  
M608



This gray smoke design is stylish, and all the trends in commercial and residential spaces. The tint of the color flows throughout the design, creating movement and texture.

Dimension: 30" x 145" (760mm x 3680mm)



**Torano**  
M601



Torano's majestic roots inspired this design, made to take after the highly desirable marble of Carrara. The quintessential classic hue, white lays the foundation, while gray and white marbling emulates the inherent charm of Carrara's finest.

Dimension: 30" x 145" (760mm x 3680mm)





**Aurora Cloud**  
M611



There's something soothing about looking out at a landscape and seeing clouds of mist. Aurora Cloud is a reminder of the renewing qualities of rain. Dabs of dark tones over a gray coat make this an overcast that brightens its surroundings.

Dimension: 30" x 145" (760mm x 3680mm)



**Aurora Ocean Gray** *NEW*  
M620



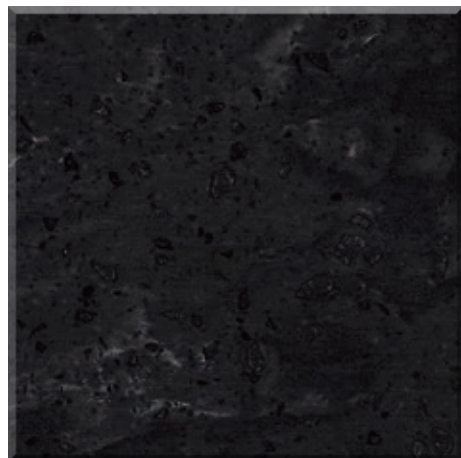
The ocean produces a color palette rich with serene, subdued shades. Aurora Ocean Gray evokes the calming effects of early morning waters on an autumn day. Slight waves of darker grays add character, allowing this design to play as a tranquil backdrop or a central color scheme.

Dimension: 30" x 145" (760mm x 3680mm)



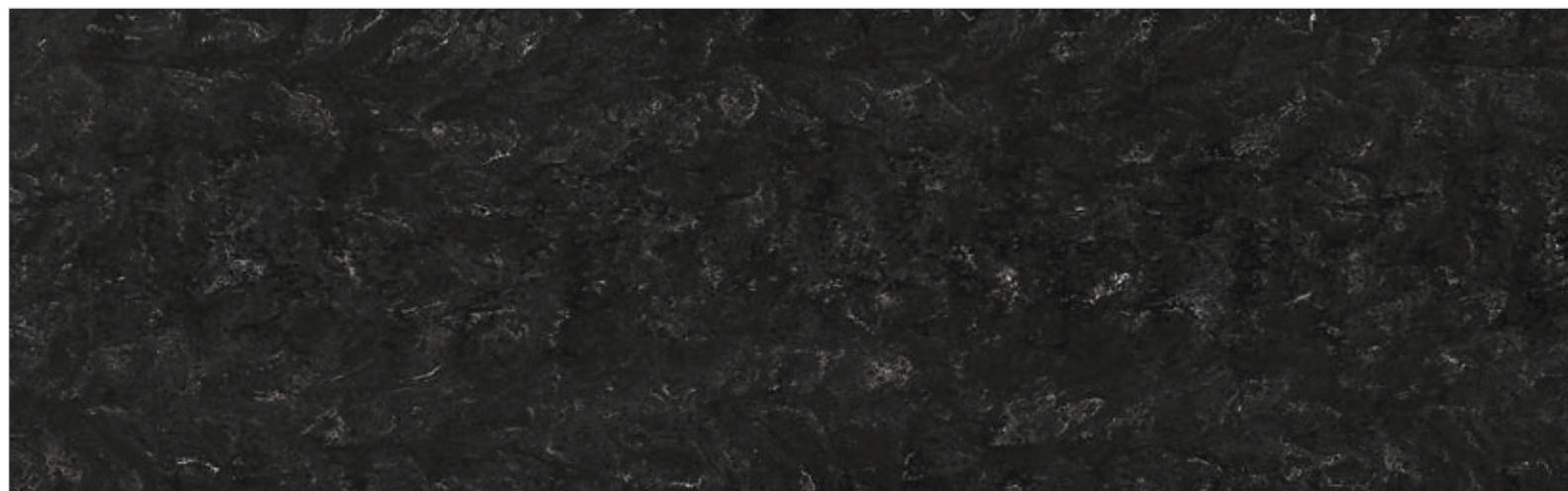


Sanremo  
M605

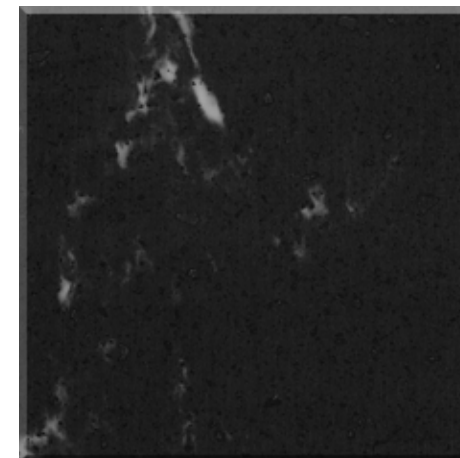


Position the room to tell the story using this cinematic filtration of black and dark grays with a speck of white. This design sets the mood and makes a statement all at the same time.

Dimension: 30" x 145" (760mm x 3680mm)

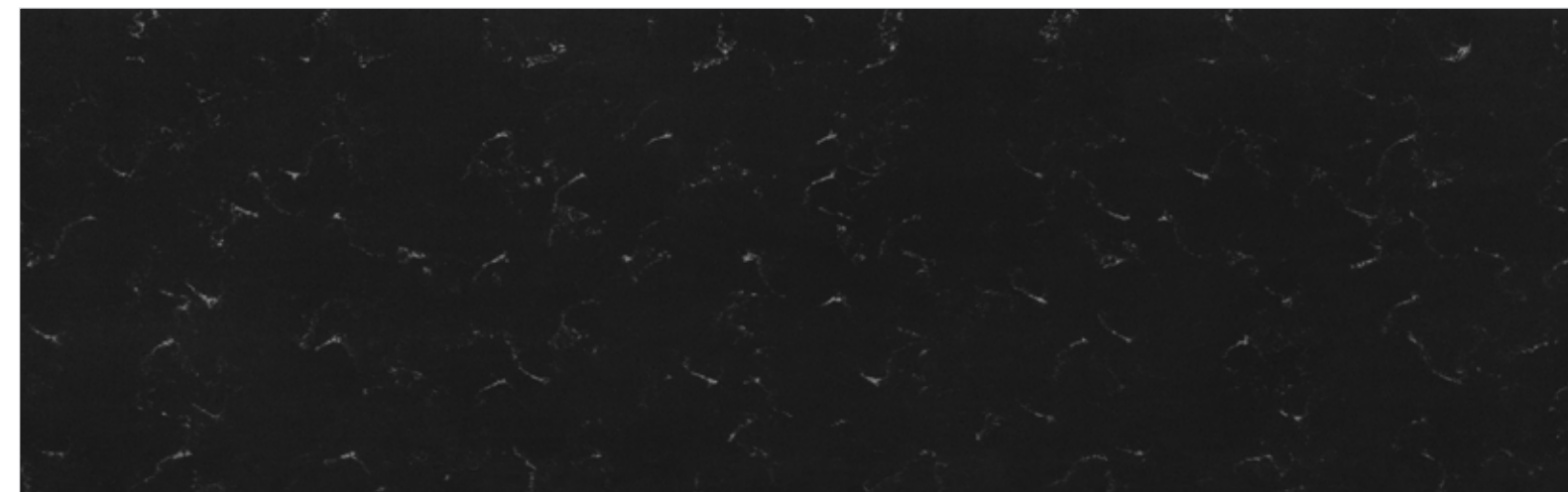


Aurora Midnight *NEW*  
M703



The still of the midnight sky, in its infinite splendor, inspired this design. Aurora Midnight is a soft black, tempering its power and enhancing its versatility. Brief constellations in the way of marbled veins interrupt the silence. The possibilities are endless.

Dimension: 30" x 145" (760mm x 3680mm)





# HI-MACS® Care & Maintenance

## General Care

Countertops: Do not place heat-generating devices directly on the HI-MACS® surface. Always use a trivet under hot cookware and heat generating appliances such as electric frying pans and toaster ovens. Strong acids (such as those found in drain, toilet bowl, and oven cleaners) should be used cautiously in close proximity to HI-MACS® as contact with them may cause whitening of the HI-MACS® that is difficult to remove. If any of these items come in contact with HI-MACS® wipe them up at once.

## Normal Cleaning

HI-MACS® is nonporous, so stains don't penetrate the surface. Everyday cleaning only requires a damp cloth and a general cleanser such as those listed below. If you use an abrasive cleaner such as Ajax® or Comet® in specific areas (matte finish), we suggest periodically cleaning the entire surface in that manner to maintain a uniform appearance.

## Spills and Stains

Most everyday spills are easily removed with soap and water using a sponge, micro-fiber cloth or paper towel. Stains such as food color, dyes, and fruit drinks can be removed with full-strength bleach followed by a general cleanser. Bleach should only come in contact with the stained area for 2 to 5 minutes and then the area should be thoroughly rinsed with clean water and towel-dried. (On a matte finish, these stains can often be removed by scrubbing with an abrasive cleaner. Nail polish can be removed with an abrasive cleanser and a Scotch Brite® pad or similar product.)

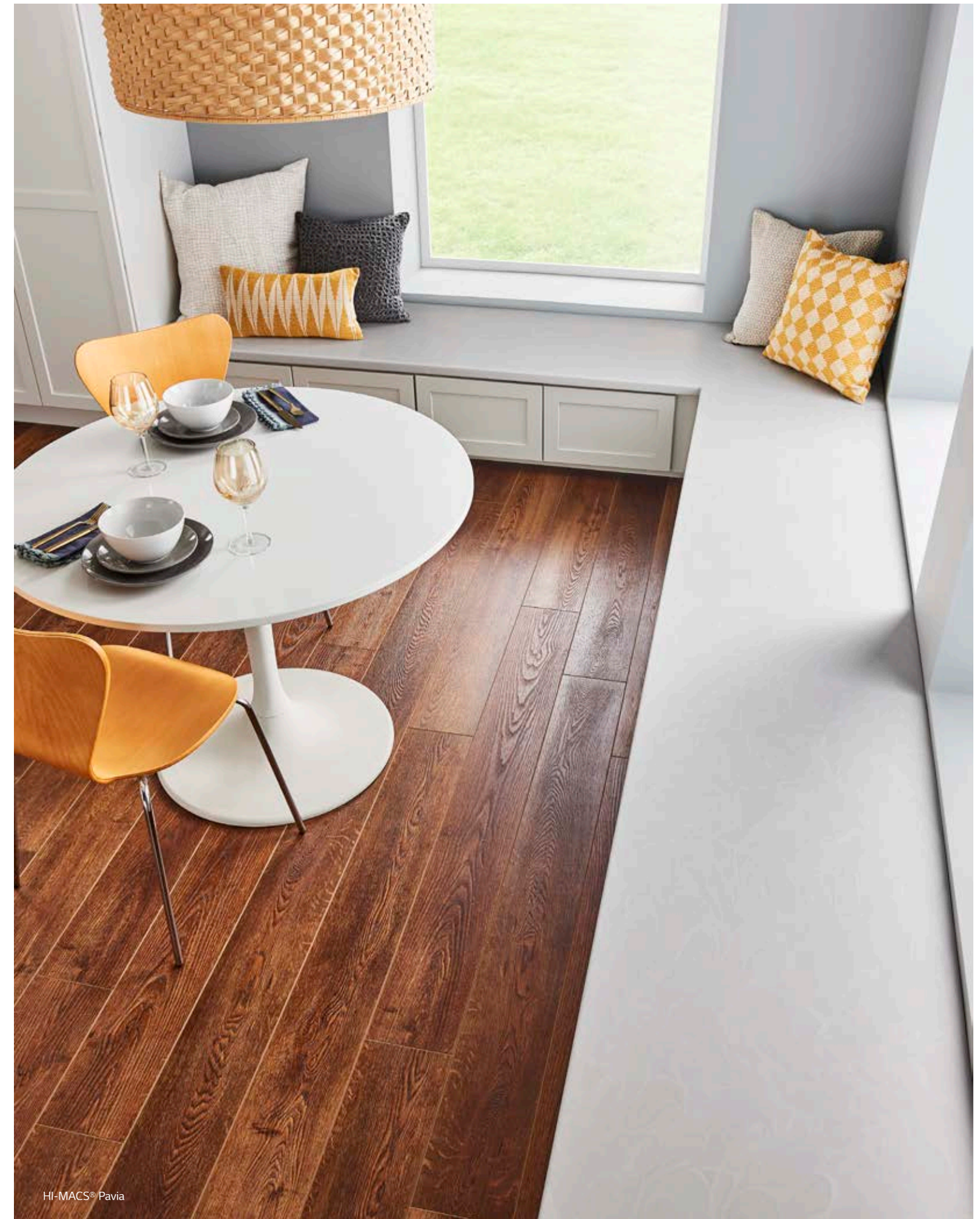
## Repairing Scratches

For removing superficial scratches, rub the area in a circular motion with a wet Scotch Brite® or similar buffing pad until the scratches are removed. Clean thoroughly with soap and water and towel-dry. Deeper scratches can often be removed by carefully light sanding with 120-grit sandpaper followed by 220- and 320-grit. Next, buff the entire surface with a wet Scotch Brite® or similar pad. Use a circular motion to restore the overall finish level.

## Severe Damage

Should your HI-MACS® sustain heat damage, a deep cut or gouge, fracture, crack or any other severe damage, a professional fabricator can repair your surface to look as good as the day it was installed.

Less Abrasive Cleaning Products	More Abrasive Cleaning Products
Lestoil®, Mr. Clean®, Baking Soda	Ajax®
Bar Keepers Friend®	Comet®
Soft Scrub®	Bon Ami®
Scotch Brite® pads (various grades)	Scotch Brite® pads (various grades)



HI-MACS® Pavia



The "inch" dimensions are nominal.  
Search for LG Hausys on NSF.org to see the listing of the certified HI-MACS®.  
Darker colors tend to require more attention than lighter colors to maintain a uniform finish.  
Most application images are CGI renderings and shown for illustration purpose only.  
Printed representation of colors may vary from actual samples. Please view the actual product prior to purchase.





LG Hausys America, Inc.  
900 Circle 75 Parkway, Suite 1500  
Atlanta, GA 30339  
1-866-544-4622  
[www.lghausysusa.com](http://www.lghausysusa.com)